




DARDA · 1941



Digitized by the Internet Archive
in 2014

<https://archive.org/details/darda1941trev>





THE 1941 DARDA

FOREWORD

It is not the desire of the Darda Staff of 1941 to produce an annual that is representative of the dreams of the boy or girl about to enter college, but one that is a well-rounded picture of the actual activities of the school year. May this yearbook be a reminder of the pleasures, scholastic attainments and spiritual blessings which you enjoyed while at Trevecca Nazarene College

TREVECCA NAZARENE COLLEGE
NASHVILLE, TENNESSEE

Editor-in-Chief, HARVEY HENDERSHOT, JR.

Business Manager, SETTLE SHAW

PROFESSOR MACKEY

Our President's friendliness to every student has been tinged with a deep kindly interest toward each one's problems with the result that his living testimony will leave a profound influence on our lives down through the years. Without his optimistic attitude, unswerving loyalty to Trevecca and deepest devotion to God, many of us, no doubt, would have become discouraged and dropped by the wayside. He seems to say with Tennyson, "To strive, to seek, to find, and not to yield." He has striven, he has sought, he is still finding and his attitude of not yielding to hindrances in his ultimate purpose, will leave in our hearts a vision and an ideal that will remain as the years go by.



PROF. A. B. MACKEY, A.B., M.A.



Trevecca's own Mr. Mackey on the campus of
Mr. Mackey's own Trevecca.





DEDICATION



PROFESSOR A. L. SNELL

Dedicated in appreciation of his ability to grasp the students' viewpoint, of being young with us, for his interest in our interests, of his fair play and wit, of his intellectual and spiritual life, and of his untiring efforts for the creation of a better Trevecca.



BOARD OF TRUSTEES

- REV. H. H. WISE Tennessee District
Chairman
- REV. M. E. REDFORD Tennessee District
Secretary
- JOHN T. BENSON Tennessee District
- REV. W. F. COLLIER Tennessee District
- REV. J. D. SAXON Tennessee District
- REV. W. M. TIDWELL Tennessee District
- REV. P. P. BELEW Georgia District
- REV. H. F. EASON Georgia District
- REV. RAYMOND BROWNING S. E. Atlantic District
- REV. C. C. BROWN S. E. Atlantic District
- REV. W. F. WIGGS Florida District
- REV. EARLE W. YENNUM Florida District
- REV. PAUL PITTS Alabama District
- REV. J. A. MANASCO Alabama District
- REV. CECIL KNIPPERS Mississippi District
- REV. H. F. TATE Mississippi District
- REV. L. T. WELLS Kentucky District
- PROF. A. B. MACKEY Kentucky District
- REV. C. E. ONEY West Virginia District
- REV. EARL PENDLETON West Virginia District





LADIES' DORMITORY

Best known to Trevecca students as the happy scene of social events.

C A M P U S V I E W S

MEN'S DORMITORY

A modern, well-equipped, fireproof building with a housing capacity of about seventy men.





AMY L. PERSON

Registrar

With words of wisdom measured by an uncompromising standard of morals, she guides and instructs her students, leaving with each the impression of a polished educator who is truly Christian.

M. E. REDFORD

Dean of Theology

It is he who is largely responsible for the training of the evangelists, pastors, and missionaries leaving Trevecca's halls. A self-sacrificing, capable, religious leader of student activities.

L. P. GRESHAM

Principal of High School

A combination of youthful vigor, mental brilliance, sound judgment, and religious principles produce in him a capable figure in Trevecca's progress.





PROPOSED BUILDING

AUDITORIUM AND OUR INSTITUTION

We Treveccans are much elated over the progress which has been made on our new auditorium.

The significance of this building in relation to the progress of Trevecca is great. The building movement in progress is one of the great movements in Trevecca history which will make our institution a more desirable and outstanding one.

Our aim cannot be altered. With the progressive spirit of accomplishment which our student body possesses, the goal must be attained. In later years we students of today will be able to glance back over the intervening years, gaze fondly at this magnificent edifice, and say, "We helped; we had a part in its construction."

When the time comes for us to leave these sacred halls, which we all love, we shall do so regretfully; yet there is still a bright side. The service we rendered Trevecca will not have ended at this picture; indeed, it will only have begun. We shall then have the opportunity of boosting and helping to build a still larger and better Trevecca for the generations of tomorrow.

After pledging allegiance to our country and our God, may we forever pledge our undying devotion to our beloved Alma Mater as she weathers the sea of time; bringing a multitude of rich blessings to anyone who may sail with her.

IN APPRECIATION OF OUR FACULTY



M. E. REDFORD
B.S., M.A., B.D.
Dean School of Religion
History, Theology



ALTA LINDSAY REDFORD
B.S.
High School Science and
Mathematics



D. A. YARBROUGH
B.S., A.B.
Head of Music Department
Superintendent of Work



LAVELLE BERRY YARBROUGH
A.B.
Piano



LILA THRASHER MACKEY
A.B., M.A.
Modern Languages



AMY L. PERSON
A.B., M.A.
Registrar of Trevecca College
English



L. P. GRESHAM
A.B., M.A.
Principal of High School
Chemistry, History



MARTHA DeWITT GRESHAM
A.B., M.A.
Biological Science

The faculty of Trevecca Nazarene College is an endowment which greatly enriches our usefulness as a Christian college. Their scholastic attainments are outstanding. Comparatively speaking, our faculty has a higher scholastic standing than many of the better known colleges. All of them have had many years of experience in the instruction of young people and have become experts in their line of teaching. More than two-thirds of them have their Master's degrees and some have worked toward their Doctors'. This in itself is a distinguishing mark of accomplishment. Our young people in the Southeastern Educational Zone will find no better teachers anywhere than those in our own Trevecca.

Not our faculty's scholastic attainments alone make them an important part of our church school; their sanctified lives wield an influence on our students that they can never forget. It is essential in a holiness college like ours, whose purpose is to train young men and women for work in the kingdom of God and the church, to have professors

and teachers who possess a high spiritual and moral standard as well as a high scholastic standing. Each of our teachers has a clear, definite experience of salvation which is reflected in their teaching and everyday living. Our students feel free to call on their teachers in times of spiritual or moral need. Every class is opened with prayer and it is not an uncommon occurrence for a teacher to help some backslidden or unsaved student to pray through and become established in his experience of salvation. This is indeed a factor for which we may boast, for very few colleges of today offer such a classroom atmosphere.

The self-sacrificing spirit of our teachers and their devotion to the upbuilding of our school has inspired us to love and uphold the ideals of our alma mater. They have dedicated their lives in loving service to the cause of Christian education; their patient and unselfish spirit endears them to our hearts; their noble and inspirational lives have instilled within us a desire to scale the heights and maintain the lofty ideals and standards which they are teaching us. God bless our Faculty!



A. L. SNELL
Ph.B., B.S., M.A.
Dean of Trevecca College
Psychology



SADIE AGNEW JOHNSON
A.B., M.A.
Editor of "Messenger"
Mathematics, Theology



M. A. MACKEY
Principal of Grade School



BESSIE SEAY
R. N.
Nurse



L. D. SHELTON
Dean of Men



FERNE DOGGETT SHELTON
B.S.
Art, High School English



R. P. GOMER
Bookkeeper



ADRON HOLLINS
Dean of Women



CLASS OFFICERS

COLLEGE SOPHOMORES

CARRIE M. PEARSON President
 OLIVER CLYDE HUFF Vice-President

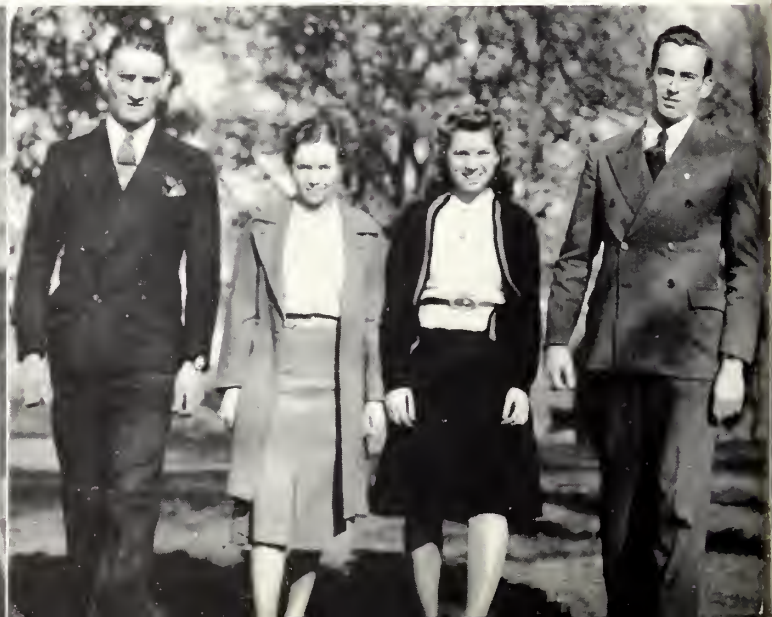
RALPH HUDSON Secretary
 RUTH JOHNSON Treasurer

COLLEGE JUNIORS

FRANK ABSTON President
 NORA DEAN GILLIAM Vice-President
 RUBY LEE NEELY Secretary and Treasurer

COLLEGE FRESHMEN

HOMER ADAMS President
 JOHN LAWWILL Vice-President
 SHIRLEY LEE Secretary
 BETTY GOLDEN Treasurer



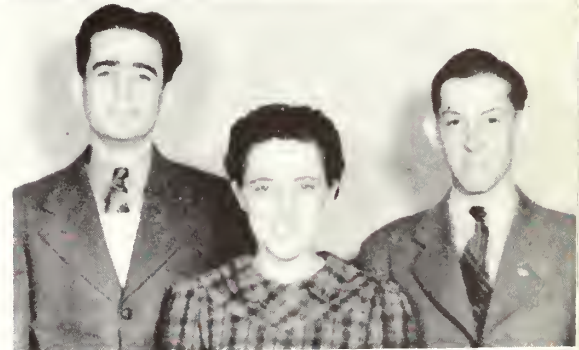
HIGH SCHOOL SENIORS

CARL ROSS President
 J. R. BROWNING Vice-President
 MARJORIE GRUBBS Secretary
 MAXINE MOORE Treasurer



HIGH SCHOOL JUNIORS

RAYMOND PARKER President
 GLEN EBY Vice-President
 VIOLA PAUGH Secretary
 MARION HAWKINS Treasurer



HIGH SCHOOL SOPHOMORES

J. B. ROSE President
 DAVID AYERS Vice-President
 RUTH PICKLER Secretary
 MARY PARKS MIMS Treasurer



HIGH SCHOOL FRESHMEN

THURSTON JOHNSON President
 BILL AYERS Vice-President
 KATHERINE HORN Secretary and Treasurer

THEOLOGICAL DEPARTMENT

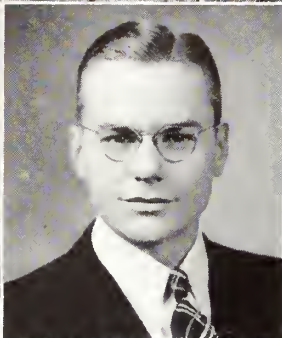
DAVID PATTEN President
 PAUL KING Vice-President
 HUBERT BANKSTON Treasurer
 LOIS DONSON Secretary





FRANK ABSTON
Albany, Kentucky

RUBY LEE NEELY
Celina, Tennessee



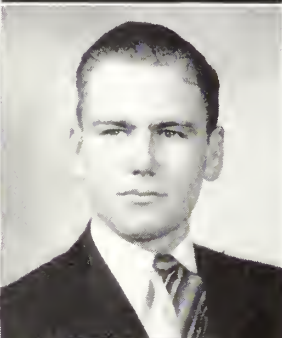
EARNESTINE MORGAN RICHARDSON
Mobile, Alabama

V. NEIL RICHARDSON
Erin, Tennessee



NORA DEAN GILLIAM
Rickman, Tennessee

PAULINE CYPERT
Florence, Alabama



MYRTLE HOOPER
McEwen, Tennessee

SAMUEL VANN
Lake City, Florida



JAMES THRASHER
Albany, Kentucky

MARY FLECK
Enfield, Illinois

C O L L E G E J U N I O R S

CARRIE PEARSON Avon Park, Florida

"A smile for all, a greeting glad,
An amiable, jolly way she had."

President, Sophomore Class, '41; Treasurer, Ladies' Glee Club, '41; Campus Reflector Staff, '40, '41; Art Club, '40; Christian Workers' Association, '40, '41; Holiness League, '40, '41; Parthenian Literary Society, '40, '41; Florida Club, '40, '41; Chorus, '40, '41; Ladies' Glee Club, '40, '41.



DONOVAN CROFT Avon Park, Florida

"Freckles, a grin, blue, blue eyes, red hair,
A true-hearted sincere fun-loving friend."

Florida Club Treasurer, '41; Chorus, '40, '41; Christian Workers' Association, '40, '41; Sports Editor, Campus Reflector, '40, '41.



JOHNNYE MILLSAPS Sweetwater, Tennessee

"It's a friendly heart that hath plenty of friends."

Secretary, Tennessee Club, '40; Secretary, Parthenian Literary Society, '41; Co-Editor, Campus Reflector, '41; Chorus, '40, '41; Ladies' Glee Club, '41; Holiness League, '41; Music Club, '40.



LOTTIE BLACKBURN Summerdale, Alabama

"Friendly, modest, clean life and sincere,
The rest of her is hard work."

Christian Workers' Association, '39, '40, '41; Alabama Club, '39, '40, '41; Holiness League, '41; Missionary League, '40, '41; Chorus, '39, '40, '41.

A. P. O'BANNON La Belle, Florida

"He was frank, fresh, hardy, of joyous mind, and strong."
Florida Club, '40, '41; Parthenian Literary Society, '40, '41.

ANNE ROSS McEwen, Tennessee

"It is the steady, quiet, plodding ones who win the life long race."
Tennessee Club, '41; Parthenian Literary Society, '41.

MILDRED FARIS Victoria, Virginia

"Her ways are ways of pleasantness, and all her paths are peace."

Campus Reflector Staff, '41; Christian Workers' Association, '41; Parthenian Literary Society, '41; Holiness League, '41; Chorus, '41.



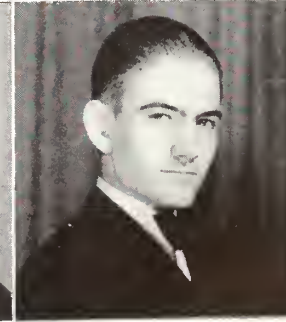
ZENITH JORDAN Jackson, Tennessee

Parthenian Literary Society, '39, '40, '41; Christian Workers' Association, '39, '40, '41; Holiness League, '40, '41; Missionary Society, '40, '41; Chorus, '40, '41.

ELOISE DICKINSON Avon Park, Florida

"Inner sunshine warms not only the heart of the owner,
but all who come in contact with it."

Darda Staff, '41; Secretary, Florida Club, '40; Vice-President, Florida Club, '41; Secretary of Chorus, '41; Secretary, Ladies' Glee Club, '41; Secretary, Holiness League, '41; Campus Reflector Staff, '41; Chorus, '40, '41.



EARL BONNEAU RYNERSON Harrodsburg, Kentucky

"He was a scholar, and a ripe and good one,
Exceeding wise, fair spoken and persuading."

Campus Reflector Staff, '40; Christian Workers' Association, '40, '41; Kentucky Club, '40, '41; Parthenian Literary Society, '40, '41.

COLLEGE SOPHOMORES



ALINE McDANIEL* Natchez, Mississippi
 "It's the songs she sings and the smiles she wears
 That makes the sunshine everywhere."
 Parthenian Literary Society, '38, '39, '40, '41; Chorus, '39, '40, '41; Ladies' Glee Club, '38, '39, '40, '41; Ramblers' Club, '38, '39, '40; Mississippi Club, '41; President, Parthenian Literary Society, '39; Secretary-Treasurer, Art Club, '40; Secretary, Reporter, Senior Class, '40; Secretary-Treasurer, Ladies' Glee Club, '40; Ladies' Quartet, '40; Ladies' Trio, '41; Vice-President, Ladies' Glee Club, '41; Co-Editor, Darda Staff, '41.



PATSY WEST Irvine, Kentucky
 "A speck of humor and a smile
 Rare hazel eyes, a friend worth while."
 Ladies' Glee Club, '39, '40, '41; Parthenian Literary Society, '40, '41; Missionary Society, '40, '41; Kentucky Club, '39, '40, '41; Holiness League, '40, '41.

HARVEY HENDERSHOT Mooresville, Indiana
 "He has his own opinions and is ready to stand by them,
 His head is clever and his hands are capable."
 Editor-in-Chief, Darda Staff, '41; Sales Manager, Darda Staff, '40; Vice-President, Christian Workers' Association, '41; President, Freshman Class, '40.



DOROTHY KNIPPERS Lawrenceburg, Tennessee
 "She's a good worker, never a shirker,
 A friend true blue, loyal through and through."
 Darda Staff, '40; Editor, Campus Reflector, '41; President, Parthenian Literary Society, '40; Ladies' Glee Club, '40, '41; Chorus, '40, '41; Ladies' Quartet, '40.

RUTH JOHNSON Miami, Florida
 "Gentle and true, simple and kind is she,
 Noble of mien with gracious speech to all."
 Parthenian Literary Society, '40, '41; Chorus, '40, '41; Stenographer, Darda Staff, '41; Secretary, Christian Workers' Association, '41; Campus Reflector Staff, '40, '41; Treasurer, Sophomore Class, '41; Florida Club, '40, '41.

HELEN SHIPPEY Calhoun City, Mississippi
 "Helen is faithful and honest too,
 A cheery worker, a friend true blue."
 Mississippi Club, '41; Chorus, '41; Parthenian Literary Society, '41.



HILMA CARLTON Alexander City, Alabama
 "Success is hers who says little, hears much and thinks deeply."
 Christian Workers' Association, '40, '41; Holiness League, '40; Secretary, Alabama Club, '40; Chorus, '40; Ladies' Glee Club, '40; Missionary Society, '40, '41; Parthenian Literary Society, '40, '41.

RALPH HUDSON Jasper, Alabama
 "Never too careless, nor too sad,
 Never too studious; always glad."
 Secretary, Sophomore Class, '41; Parthenian Literary Society, '40, '41; Men's Glee Club, '40, '41; Chorus, '40, '41; Holiness League, '40; Christian Workers' Association, '41.



LUCY MAE FARIS Victoria, Virginia
 "She is essentially a lady, sympathetic, affectionate, and true
 to our traditions."
 "Ladies' Glee Club, '41; Chorus, '40, '41; Parthenian Literary Society, '40, '41; S. E. A. Club, '40, '41; Christian Workers' Association.

MONTINE MAYHAN Bruce, Mississippi
 "Sober, quiet, passive and demure
 One of those friends of whom your are always sure."
 Darda Staff, '41; Chorus, '40, '41; Mississippi Club, '40, '41; Christian Workers, '40, '41; Missionary Society, '40.

*Miss McDaniel, a College Junior appears in this group by mistake.

COLLEGE SOPHOMORES



First Row

- MILDRED DRISKELL Miami, Florida
- GENEVE CUNNINGHAM Murray, Kentucky
- SADIE CAVENDER Nashville, Tennessee
- JUANITA WILSEY Lakeland, Florida
- EVA BLACKBURN Summerdale, Alabama
- BETTY GOLDEN Charleston, West Virginia

Second Row

- NAOMI NABORS Calvert, Alabama
- RUBY JONES Marrilton, Arkansas
- MADELINE McCASKELL Magnolia, Mississippi
- ELISE MILLER Monterey, Tennessee
- MARY FRANCES BROWN Meridian, Mississippi
- MARY SHAFFER Dawes, West Virginia

PICTURES MISSING

- MAURICE O'BANNON La Belle, Florida
- NORWOOD PAINTER Calvert, Alabama
- JOHN D. SANDERS Hamilton, Mississippi
- ELIZABETH THOMPSON SPRUILL Nashville, Tennessee
- BEATRICE SHOCKLEY WARREN Memphis, Tennessee
- MARION YOUNG McEwen, Tennessee

COLLEGE FRESHMEN



HOMER ADAMS Ft. Lauderdale, Florida

LORENE FIELDS Tuscaloosa, Alabama



CORNELIA DEAN Plant City, Florida

MARGARET McCLAIN Sheffield, Alabama

CAROLYN CAMPBELL Princeton, Florida

VIVIAN McAULAY Stewart, Tennessee

OVIE GARNTO Wrightsville, Georgia



IRLENE STOVALL Highway, Kentucky

ERLENE CURL Blountsville, Alabama

LOIS SEXTON Columbia, South Carolina

NORMA MUSE Delmer, Kentucky



JOSHUA SPOONER Hernando, Florida

PICTURES MISSING

DOROTHA BIGGERS Rebecca, Georgia

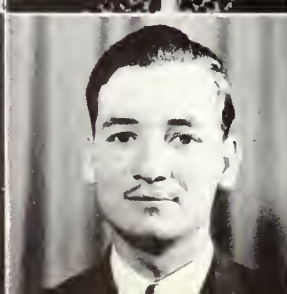
VERA MAE BLANTON Nauvoo, Alabama

ROBERT BLANTON Nauvoo, Alabama

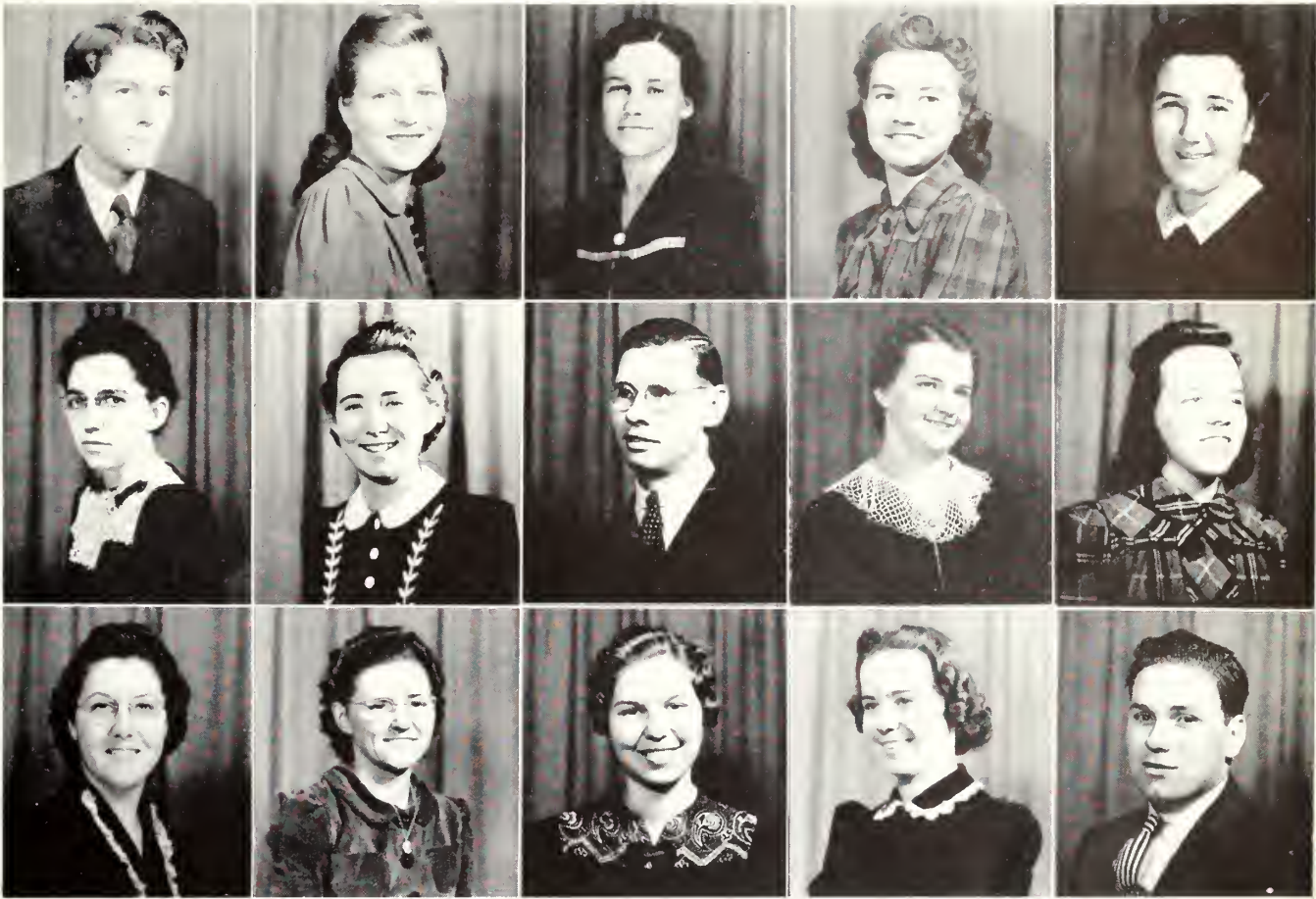
OLIVE ROSE BOSTICK Wurtland, Kentucky

JAMES DUDLEY BURROW Goodlettsville, Tennessee

WENDELL DAVIDSON Albany, Kentucky



C O L L E G E



First Row

GLEN STOVALL Highway, Kentucky SHIRLEY LEE Brewton, Alabama
 KATHLYN HOWARD Pineville, Kentucky PAULINE HOWARD Pineville, Kentucky
 ROBERTA SAMPLES Bomont, West Virginia

Second Row

GLADYS OWEN Ft. Myers, Florida EUEL FOX Victoria, Virginia
 HELEN HAYNES Manchester, Georgia GOLDIE PLETCHER Altoona, Pennsylvania
 MARY STEENBERGEN Ashland, Kentucky

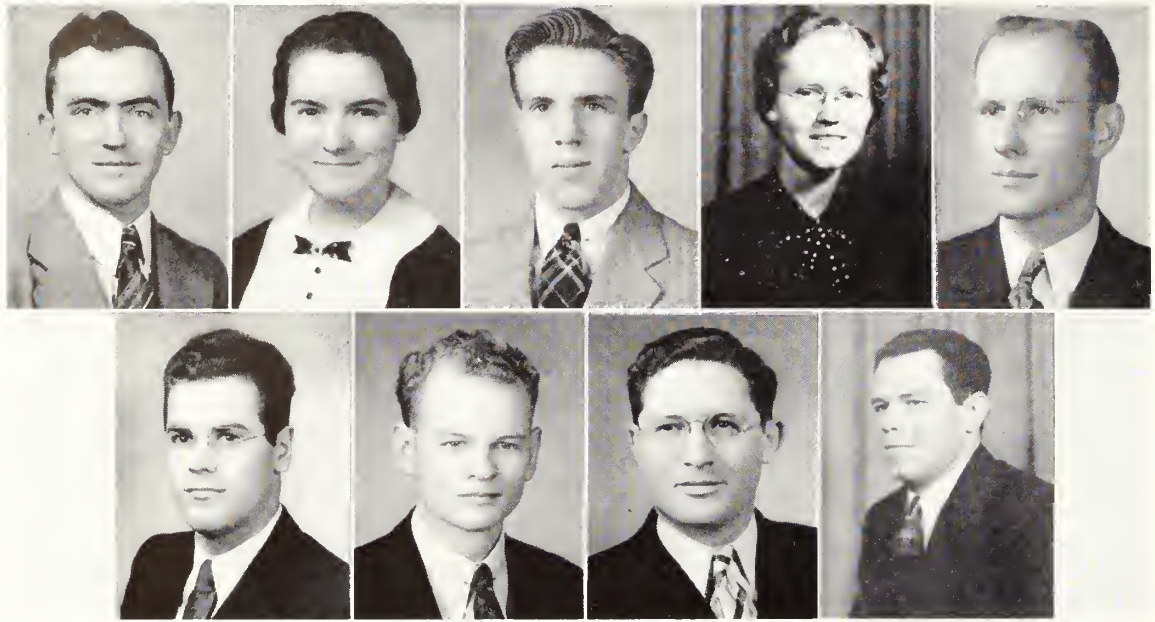
Third Row

ANNA LLOYD SAXON Springfield, Tennessee DOROTHY MEADOR Greensboro, North Carolina
 GLADYS MILLER Wrightsville, Georgia VALERIA CAMPBELL Princeton, Florida
 MELVIN GILL Erin, Tennessee

PICTURES MISSING

PAUL FISHER Flint, Michigan HORACE JOSCELYN Nashville, Tennessee
 MARGARET FOSTER Fairfield, Alabama EVERETTE MACKEY Albany, Kentucky
 MARY HOOVER Heaston, Pennsylvania FRED A NESBITT Paris, Tennessee

F R E S H M E N



THEOLOGICAL DIPLOMA STUDENTS

DAVID PATTEN Pensacola, Florida
 President, Theological Class, '41; Christian Workers' Association, '37, '41; Parthenian Literary Society, '37, '41; Holiness League, '37, '41; Assistant Salesmanager Darda Staff, '41; Treasurer, Christian Workers Association, '41.

LOIS DONSON Muncie, Indiana
 Ladies' Quartet, '40, '41; Ladies' Trio, '41; Parthenian Literary Society, '39, '41; Ramblers' Club, '39, '40; Yankee Club, '41; Holiness League, '39, '41; Christian Workers' Association, '39, '41; Chorus, '39, '41.

PAUL KING Pittsburgh, Pennsylvania
 Parthenian Literary Society, '39, '40, '41; Yankee Club, '40, '41; Vice-President, Yankee Club, '41; Vice-President, Theological Class, '41; Holiness League, '40, '41; Christian Workers' Association, '40, '41; Missionary Society, '40, '41; Darda Staff, Theological Representative, '41.

JACKLYN ELIZABETH WELCH Orlando, Florida
 Parthenian Literary Society, '41; Holiness League, '40, '41; Florida Club, '40, '41; Christian Workers' Association, '40, '41.

JESSE MIDDENDORF St. Louis, Missouri
 President, Ramblers' Club, '38, '39; Tennessee Club, '41; Darda Staff, '39, '40; Ministerial Association; Honor Roll; Christian Workers' Association, '38, '39; Men's Glee Club, '39; Parthenian Literary Society, '40, '41; President, Theological Class, '40; Student Pastor, '40, '41.

CHESTER D. SECK Alexandria, Pennsylvania
 Vice-President, Christian Workers' Association, '40; Treasurer, Christian Workers' Association, '40; Secretary, Theological Class, '40; Ramblers' Club, '38-'40; Yankee Club, '41; Men's Glee Club, '38-'41; Chorus, '38-'41; Holiness League, '38-'41; Missionary Society, '38-'41; Parthenian Literary Society, '38-'41.

OLIVER CLYDE HUFF Louisville, Kentucky
 Student Pastor, '40, '41; Men's Glee Club, '40, '41; Chorus, '39, '40, '41; Theological Representative Darda Staff, '40; Salesmanager, Darda Staff, '41; Parthenian Literary Society, '39, '40, '41; Holiness League, '39, '40, '41; President, Kentucky Club, '41; Kentucky Club, '39, '40, '41; Men's Quartet, '40.

GERALD W. EVERIST Tama, Iowa
 Ramblers' Club, '40; Yankee Club, '41; Christian Workers' Association, '40, '41; Parthenian Literary Society, '40, '41; Holiness League, '40; Missionary Society, '40, '41.

SETTLE SHAW Castle Hayne, North Carolina
 President, Holiness League, '40, '41; Ramblers' Club, '37-'40; S. E. A. Club, '41; Men's Glee Club, '37-'41; Quartet, '37-'41; Parthenian Literary Society, '37-'41; Christian Workers' Association, '37-'41; Missionary Society, '38-'41; Chorus, '37-'41; Business Manager, Darda Staff, '41.

TH.B. GRADUATES

MARY FRANCES LORD
 Sanford, Florida
 Who's Who, '40, '41; Parthenian Literary Society, '39, '40, '41; Holiness League, '40, '41; Christian Workers' Association, '39, '40, '41.

ROBBIE JOHNSON
 Nashville, Tennessee
 Parthenian Literary Society, '39, '40, '41; Christian Workers' Association, '39, '40.

VERA FELKER
 Lawrenceburg, Tennessee
 Parthenian Literary Society, '41; Christian Workers' Association, '41; Holiness League, '41; Missionary Society, '41.



DOYLE RAE THOMAS Hernando, Florida
(A Third Year Theological Student)

JOHN LAWWILL Winchester, Kentucky

JAMES BOSHELL Jasper, Alabama

ESTHER RUTH NOSSETT Oakland City, Indiana

CONNIE KELLY Columbia, South Carolina

ROBERT WENDELL Johnstown, Pennsylvania

BILLY WADE DOWNING Overt, Mississippi

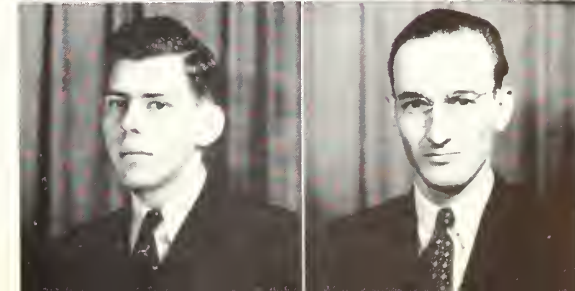
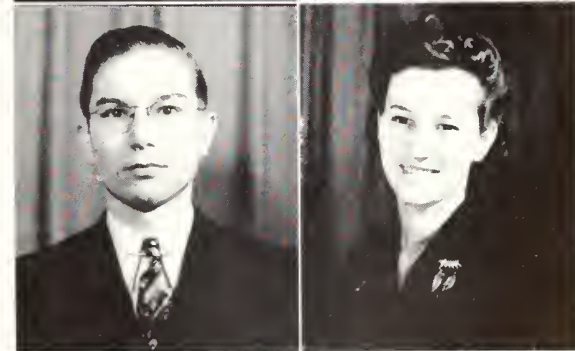
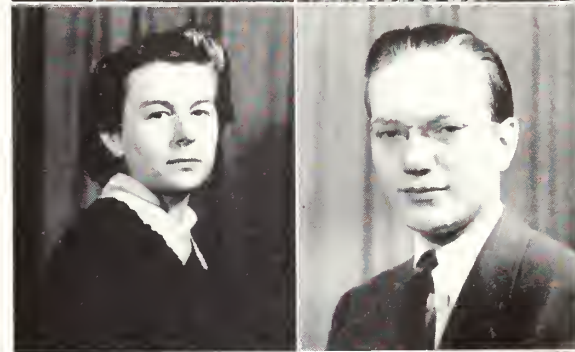
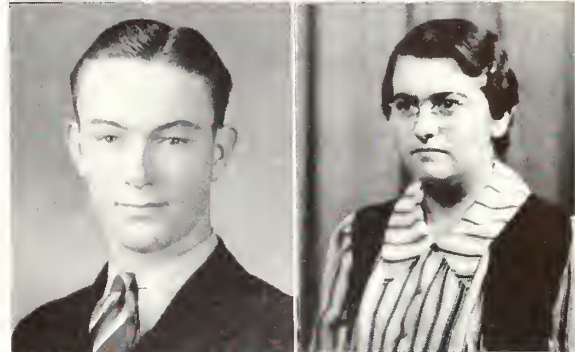
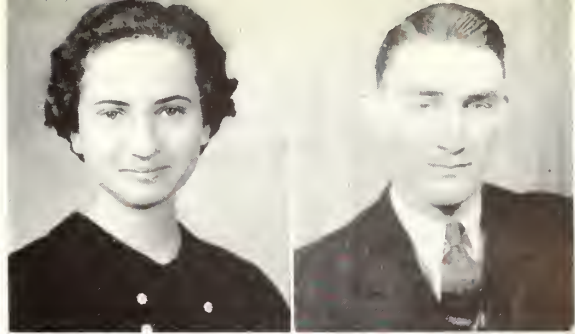
ERMA CRAZE Frostburg, Maryland

DOROTHY MOORE Pineville, North Carolina

ROBERT DAVISSON North Vernon, Indiana

PAUL JORDAN Pittsburgh, Pennsylvania

WILSON STRASBAUGH Ft. Myers, Florida



PICTURES MISSING

MARIE CASHDOLLAR Nashville, Tennessee

ARTHUR BATSON Avon Park, Florida

H. WESTON BROWN Owego, New York

MRS. RUTH CASHION Tunnel Hill, Georgia

VIDA COOK Sulligent, Alabama

MELVIN FREEMAN Gadsden, Alabama

LESLIE JETER Miami, Florida

FRED MOORE Hanceville, Alabama

FLOYD SHAFER Dawes, West Virginia

DELIA SHAW Orlando, Florida

C O L L E G E
T H E O L O G I C A L
S T U D E N T S



First Row

HUBERT BANKSTON Jasper, Alabama	OLA SUMNERS Nashville, Tennessee
WILLIAM SNYDER Springdale, Arkansas	A. F. HADDEN Chattanooga, Tennessee
RAY DAVIS Nashville, Tennessee	

Second Row

REBA BURROW Fulton, Kentucky	PAUL V. RIDENHOUR Jacksonville, Florida
J. P. BLACKMAN Winnsboro, South Carolina	JEWELL HALL Jacksonville, Florida

PICTURES MISSING

MRS. JOHN R. BROWNING Logan, West Virginia	RUBY LEE HARRISON Monroeville, Alabama
ETTA B. COLEMAN Jonesboro, Arkansas	ALTON HODGE Brookfield, New York
J. E. COOK Nashville, Tennessee	ROY O. McHAN Oneonta, Alabama
E. H. DAVIS Syracuse, New York	ROBERT RUTHERFORD Orlo Vista, Florida
K. L. DRAKE Jacksonville, Florida	HUGH SLATER Winnsboro, South Carolina
JAMES FERRIS DUNLAP Manchester, Alabama	RICHARD C. STEPHENS Tampa, Florida

MINISTERIAL STUDENTS

HIGH SCHOOL SENIORS

JOHN R. BROWNING Logan, W. Va.

Octavian Literary Society, '40, '41; President, Junior Class, '40; Glee Club, '40, '41; President, West Virginia Club, '41; Vice-President, Senior Class, '41.



ARCHIE CLIFTON MADISON Nashville, Tenn.

Assistant Athletics Director; Florida Club, '41; Octavian Literary Society, '41.

MAXINE MOORE Charleston, W. Va.

Chorus, '40, '41; Reporter, West Virginia Club, '41; Treasurer, Senior Class, '41; Holiness League, '40, '41.



MARJORIE GRUBBS Dayton, Ky.

Glee Club, '38-'41; Octavian Literary Society, '38-'41; Christian Workers' Association, '41.

ROGER ROBINSON Loudon, Tenn.

Tennessee Club, '41; Chorus, '41; Octavian Literary Society, '41.

JOHN APPLE Springfield, Tenn.

Chorus, '41; Tennessee Club, '41; Darda Staff, '41; Octavian Literary Society, '41; Campus Reflector Staff, '41.



CHESTER DAVIS Roanoke, Va.

S. E. A. Club, '40, '41; Octavian Literary Society, '40, '41; Christian Workers' Association, '40.

RAYMOND PARKER Jackson, Miss.

Octavian Literary Society, '41; Christian Workers' Association, '41; Mississippi Club, '41.

WILMA MOORE Muncie, Ind.

President, Ladies' Glee Club, '40, '41; Secretary, Ramblers' Club, '39; President, Junior Class, '40; Octavian Literary Society, '38-'41; Chorus, '38-'41; Yankee Club, '41; Ladies' Quartet, '40; Darda Staff, '41; Ladies' Trio, '41.

MARY DEE SPEARS Phenix City, Ala.

Alabama Club, '41; Chorus, '41; Holiness League, '41; Missionary Society, '41; Christian Workers' Association, '41; Octavian Literary Society, '41.



GLENN CASS Columbus, Ga.

Georgia Club, '40, '41; Chorus, '41; Holiness League, '40, '41; Missionary Society, '40, '41; President, Sophomore Class, '40; Christian Workers' Society, '40, '41; Ministerial Association, '41; Octavian Literary Society, '40, '41.

HOLLIS JOINES Gainesboro, Tenn.

CARL ROSS McEwen, Tenn.

President, Senior Class, '41; President, Holiness League, '39-'40; President, Tennessee Club, '40; Glee Club, '39-'41; Chorus, '39-'41; Missionary Society, '39-'41.

WILLARD WILSEY Lakeland, Fla.

Glee Club, '40; Chorus, '40, '41; Florida Club, '39, '40; Yankee Club, '41; Holiness League, '39, '40; Octavian Literary Society, '40, '41.

PICTURES MISSING

MARJORIE SNODGRASS Charlotte, N. C.

JESSIE MAI MERCER Nashville, Tenn.





MARION HAWKINS New Albany, Indiana

MARIE PARKER Monterey, Tennessee

VIOLA PAUGH Beverly, West Virginia



GLEN EBY Ft. Lauderdale, Florida

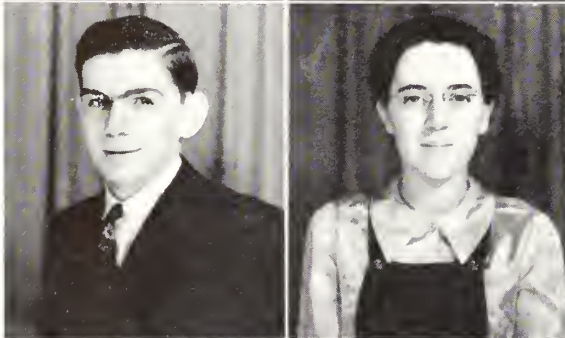
CURTIS ALBROW Louisville, Kentucky

EDITH PAUGH Beverly, West Virginia

LOUISE HARRELSON Immokalee, Florida

RALPH WHITE Charleston, West Virginia

GENEVA WOODLEE Beersheba Springs, Tennessee

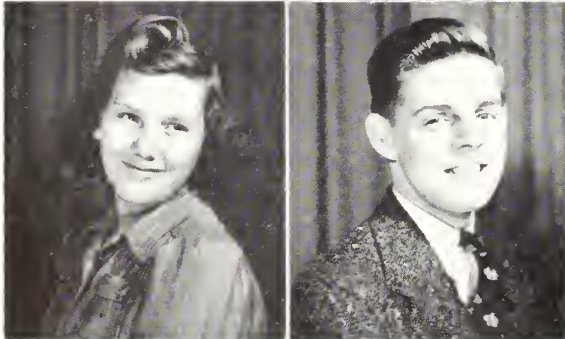


BAKER BAILEY Meridian, Mississippi

FAYE BROOKS Nashville, Tennessee

CARMAL CARROLL Olive Hill, Kentucky

JOYCE CHESHIRE Ft. Lauderdale, Florida



MARGARET CRAPO Miami, Florida

NELLIE RUTH CRAPO Miami, Florida

EDNA MADDOCKS Lakeland, Florida

CLIFFORD MORRIS Charleston, West Virginia

DAN MURRAY Beckley, West Virginia

SHERMAN NASH Nashville, Tennessee

FLOYD PEELE Orlando, Florida

ELIZABETH REED Monterey, Tennessee

LUCILLE RODGERS Gainesville, Florida

FRANK TATE Columbus, Mississippi

MARIE TATE Columbus, Mississippi



PICTURES MISSING

HIGH SCHOOL JUNIORS



H I G H S C H O O L S O P H O M O R E S

FIRST ROW

Mary Parks Mims Paris, Tenn.
J. B. Rose Sparta, Tenn.

Doris Forbes Roanoke, Va.
Shural Knippers Lawrenceburg, Tenn.

Linelle Callihan Monterey, Tenn.
Herbert Brown Lexington, Ky.

SECOND ROW

John Brown Meridian, Miss.
Ileen Ireland Rossville, Ga.

Duane White Dunbar, W. Va.
Edith Wilson Charleston, W. Va.

James Johnson Nashville, Tenn.
Willene Agee Old Hickory, Tenn.

THIRD ROW

Margaret Keeton Ann Arbor, Mich.
Ralph Young Winchester, Tenn.

Margaret Bryant Irvine, Ky.
Troy Cook Sulligent, Ala.
Betty Reynolds Columbia, S. C.

Eddie Truesdale McDavid, Fla.
Juanita Smith Memphis, Tenn.

PICTURES MISSING

Laverne Anderson Nashville, Tenn.
David Ayers Imperial, Pa.
Oscar Crews Hattiesburg, Miss.
Harry Eaton Clinton, Pa.
Cordell Hudson Gordonsville, Tenn.

W. A. Jordan Jackson, Tenn.
Martha Bell Kingery Cincinnati, Ohio
Pauline Manns Memphis, Tenn.
Gloria McDowell Newport, Ky.
Ralph Murray Beckley, W. Va.

Ruth Pickler Faxon, Tenn.
Yonnell Presley Nashville, Tenn.
J. C. Simpson Monroe, N. C.
Joel Storie Nashville, Tenn.
Anne Trout Camden, Tenn.

H I G H S C H O O L F R E S H M E N

FIRST ROW

James Thomas Dunbar, W. Va.
Mae McLendon Winnsboro, S. C.

Thurston Johnson Thomaston, Ga.
Pauline Ellis Liberty, Ky.

Charles Fountain Lakeland, Fla.
Helen Gober St. Pontiac, Mich.

SECOND ROW

Gladys Howell Beckley, W. Va.
Pat Land Orlando, Fla.

Marie Combs Beckley, W. Va.
Wallace Grice Brewton, Ala.

Jessie Nichols Old Hickory, Tenn.
Malcolm North Nashville, Tenn.

PICTURES MISSING

Talmadge Agee Nashville, Tenn.
Harold Anglea Nashville, Tenn.
William Ayers Shelbyville, Ind.
Caroy Beckum Memphis, Tenn.
Howard Clendening Lewisburg, Tenn.
Margaret Cole Nashville, Tenn.

Virginia Combs Beckley, W. Va.
Katherine Horn Nashville, Tenn.
Tennyson Howard Wilmore, Ky.
Josephine Johnson Nashville, Tenn.
Florence Lane Woodbine, Tenn.

Cornelia Leverette Nashville, Tenn.
Lucille Riggs Annon, Mo.
Sarah Spruill Nashville, Tenn.
John Summerlin Arcadia, Fla.
Irene Sutfon Nashville, Tenn.
Eugene Wells Nashville, Tenn.





GRAMMAR GRADES

MRS. M. A. MACKEY Principal

MRS. ELIZABETH T. SPRUILL Instructor

Joseph Bates

Eva Fay Mackey

Brentson Spruill

Phyllis Lee Browning

Neva Gay Mackey

Howard Spruill

Emma Juliah Coleman

Harry Gibson

James E. Spruill

Mary Jane Dahlin

Raymond Gibson

Jean Spruill



NURSING CLASS

Receiving practical instruction in caring for the sick, watchful for opportunities thus afforded to administer to the spiritual ills of men.



CHORUS

"Let music charm me last on earth
And greet me first in Heaven."
Hymns, classics and semi-
classics make up the re-
pertoire of this capable singing
organization



MEN'S GLEE CLUB

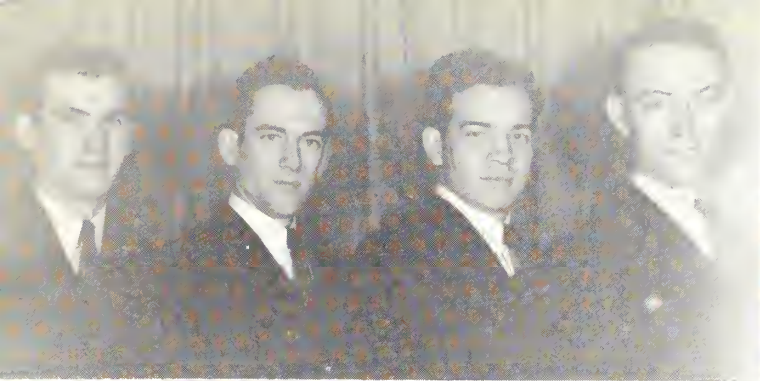
Harmonizing music and per-
sonalities, this group has
been active representing Tre-
vecca in our city and has
visited several Nazarene
churches in the Southeastern
Educational Zone.



LADIES' GLEE CLUB

Like a refreshing spring
shower, the songs of the
glee club have added much
to musical programs and re-
ligious services on the cam-
pus and in local churches.





Top Left: Thrasher, Adams, Abston, Boshell.
Top Right: Cook, Hendershot, Lawwill, Shaw.
Left: Moore, McDaniel, Donson.

Q U A R T E T S A N D T R I O

Our quartets and our trio are not only proving a blessing here in the school and city, but are beneficial in week-end revivals and helpful in

the educational tours of the Southeastern Educational Zone made in the interest of our school.



GENEVE CUNNINGHAM
Fulton, Kentucky

C E R T I F I C A T E I N V O I C E



Art Class

FINE ARTS

The Fine Arts Department is one of the most active groups in T. N. C. Not only does it wield an educational and elevating influence, but it affords much pleasure to those who participate in its activities. Private lessons in piano, voice and speech

with group work in the glee clubs, chorus and quartets are offered by this department. Frequent social events in connection with the groups make the work most pleasant and attractive.

Voice and Piano Students





THE TRUMPETER

Stirring tunes for soldiers' steps,
Low, soft, sweet strains dear,
All he can bring, inspiring, glad,
And spreading much happiness here.

ACCORDIAN PLAYER

Pushing music from a squeeze box may not be good exercise, but it can be most soothing to tired, troubled spirits.

PIANO LESSON

Learning to translate dots on and between lines into well-known melodies.





PARTHENIAN LITERARY SOCIETY

All college students are members of the Parthenian Literary Society; all high school students, of the Octavian Literary Society. The duty of these societies is to present an interesting program each Fri-

day night. These programs play an important role in the activities of our students—especially those who date. Taking part in plays, musical numbers, etc., helps develop the talents of the students.

OCTAVIAN LITERARY SOCIETY





CHRISTIAN WORK

The Christian Workers' Association is comprised of students who have led true Christian lives and have a passion for lost souls. Their aim is to carry the message of salvation to the unfortunate of Nashville and to prepare themselves for practical Christian service. Each Sunday these young people visit the city and county workhouses, the jail and the General Hospital of Nashville. We consider carrying the message of salvation not only a duty but also a pleasure, and feel that we are accomplishing something for the Lord that will be realized only when He shall bestow His eternal rewards.

OFFICERS

J. B. ROSE President
 HARVEY HENDERSHOT Vice-President
 RUTH JOHNSON Secretary
 DAVID PATTEN Treasurer

THE CHRISTIAN WORKERS' ASSOCIATION





"Even as ye have done it unto the least of these, my brethren, ye have done it unto me."

CHRISTIAN WORKERS' ASSOCIATION

The Christian Workers' Association has done very effective work throughout the city of Nashville and in surrounding territory. It has no doubt been an inspiration and encouragement to more people per person than any other organization in Nashville. The workers speak to an average of three thousand people each weekend. Their reports show that approximately one thousand people have been converted through the efforts of our workers during the school year.

With this training our young people will go out to the Church of the Nazarene and will be a propelling force in shaping the destiny of thousands. Your church will be made better because of this invaluable training.

". . . And ye shall be witnesses."





MISSIONARY SOCIETY

Members of our Missionary Society are students called as missionaries to the foreign fields and all others who are interested in this work. For speakers during the year, the society has se-

cured returned missionaries and outstanding missionary leaders. A mite box is kept on each table in the dining hall for student contributions to the cause of missions.



HOLINESS LEAGUE

It is the purpose of the Holiness League to hold high the standard of holiness and to indoc-

trinate our students with ideals that will stand under the severest tests of life.





I N M E M O R I A M

MRS. A. C. MIMS

Born March 29, 1877

Died October 24, 1940

Who can find a virtuous woman? for her price is far above rubies.
The heart of her husband doth safely trust in her, so that he shall have no
need of spoil.
She will do him good and not evil all the days of her life.
She seeketh wool, and flax, and worketh willingly with her hands.
She is like the merchants' ships: she bringeth her food from afar.
She riseth also while it is yet night and giveth meat to her household, and a
portion to her maidens.
She considereth a field, and buyeth it: with the fruit of her hands she
planted a vineyard.
She girdeth her loins with strength, and strengthened her arms.
She perceiveth that her merchandise is good: her candle goeth not out
by night.
She layeth her hands to the spindle and her hands hold the distaff.
She stretcheth out her hand to the poor: yea, she reacheth forth her hands
to the needy.

—Proverbs 31:10-20.



S T A T E

•

T E N N E S S E E



•

A L A B A M A

•



G E O R G I A

•

C L U B S

•



M I S S I S S I P P I

•

F L O R I D A

•



S O U T H E A S T A T L A N T I C

•





STATE CLUBS

•

K E N T U C K Y

•



W E S T V I R G I N I A

•



Y A N K E E

•



LIBRARY

The library is a very essential part of Trevecca College. It not only meets the needs of the College Department, but also the Theological and high school departments.

The reading room is open from seven o'clock in the morning to nine-thirty o'clock in the evening. Here the students have the privilege of reading books that are on reserve for special classes. Students are very fortunate because the teachers are able to get books for the reserve

shelf from libraries all over the city. There are magazines in the reading room and everyone is allowed to enjoy and study them.

The librarians have begun a new project this year which is the rebinding of all mutilated or worn books. By the time we are ready to occupy the new library which will be located in the new building now under construction, we hope to have all books in the best possible condition.





COOK AND CHICKENS

Despite the proverbial fondness of preachers for chickens, most of these attain a ripe old age.

NEW OFFICES

Our bookkeeper and busy office staff efficiently care for the business of a rapidly-growing Trevecca.

WATTS, VOLTS, OHMS, AMPS

Awake at the switch—yes, someone must care for all the little volts and amperes.

CLEAN UP

Rake a while and lean a while. Yes, the rake is very useful.

PLUMBING

Pipes and valves and wrenches are no mystery to some Trevecca students.



PRINT SHOP

(Exterior)

This fireproof building is a great improvement over the old wooden print shop.



PRINT SHOP

(Interior)

From these busy presses come "The Messenger" with news of Trevecca.



STIRRING MUD

The "Georgia Buggies" roll for the Alumni Building construction, which is well under way.



SOURCES OF OATS AND BEANS

The most essential part of the school? Well, we'd hate to do without it.

SHOVELING COAL

Our firemen are kept busy as old King Winter swoops down upon us.





FRIENDS

A boy, a girl—such it always was and such it will always be.

SWEETS

The sweet tooth usually triumphs over fear of too many calories.

CAMPUS WORK

We are proud of this OUR Campus. It must look its best.

HIKING

"Communing with Nature in her visible forms." Thus we rest tired eyes and minds.

FLORIDA SUPPER CLUB

Strengthening the tie that binds together the folks from the land of sunshine.



GIRLS AND GIRLS

Chattering about home and styles and boys, our ladies get together.



GIRL'S MAIL??

Life in the dormitory with all the fellows. There's no life like this, no friends like these.



THE GREEN CARPET ROOM

A counselor in perplexity, a friend in need—this is our dependable Dean.



BOYS AND BOYS

Problems are settled and plans are made when the men have their session.



IT MUST BE FRIDAY

Even at school, the feminine touch makes each room a home.





RINGING SENTIMENTS

Progress hath stolen its work, but left its pleasant memories.

"SHASTA"

Her paint is dull, her motor squeaks and knocks, but she runs—
sometimes.

BASKETBALL

All work and no play makes dull boys. No dull ones here.

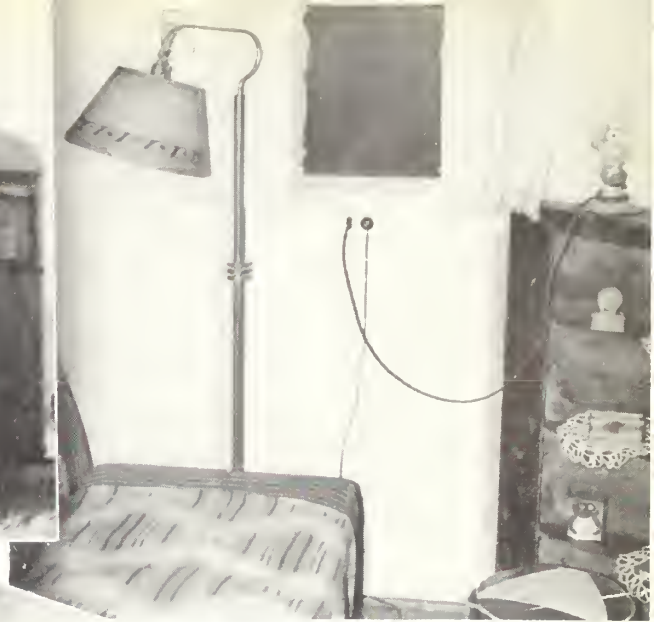
ROLLING CHILDREN

There's always some new sport to while the hours and defeat dull
monotony.

VOLLEY BALL

Books and worries are forgotten as we join the exciting games.





TRAILER FOLK

As pioneers, who sought new land and lived in their rolling homes, so these have come seeking knowledge. This interesting group has increased in size for the past few years until we now have a small town. Their ingenuity has enabled them to live comfortably here through the months of school and to make their trailer town a place of true happiness.

The lives of these folks reflect the "do or die" spirit of the pioneers, the spirit that drives Trevecca on.





CARMAL CARROLL Best Student

HARVEY HENDERSHOT . . . Best All Round

OLIVER HUFF Friendliest

FRANK ABSTON Most Popular

J. RAYMOND PARKER . . . Most Attractive



C A M P U S



MARY FRANCES LORD Best Student

LOIS DONSON Best All Round

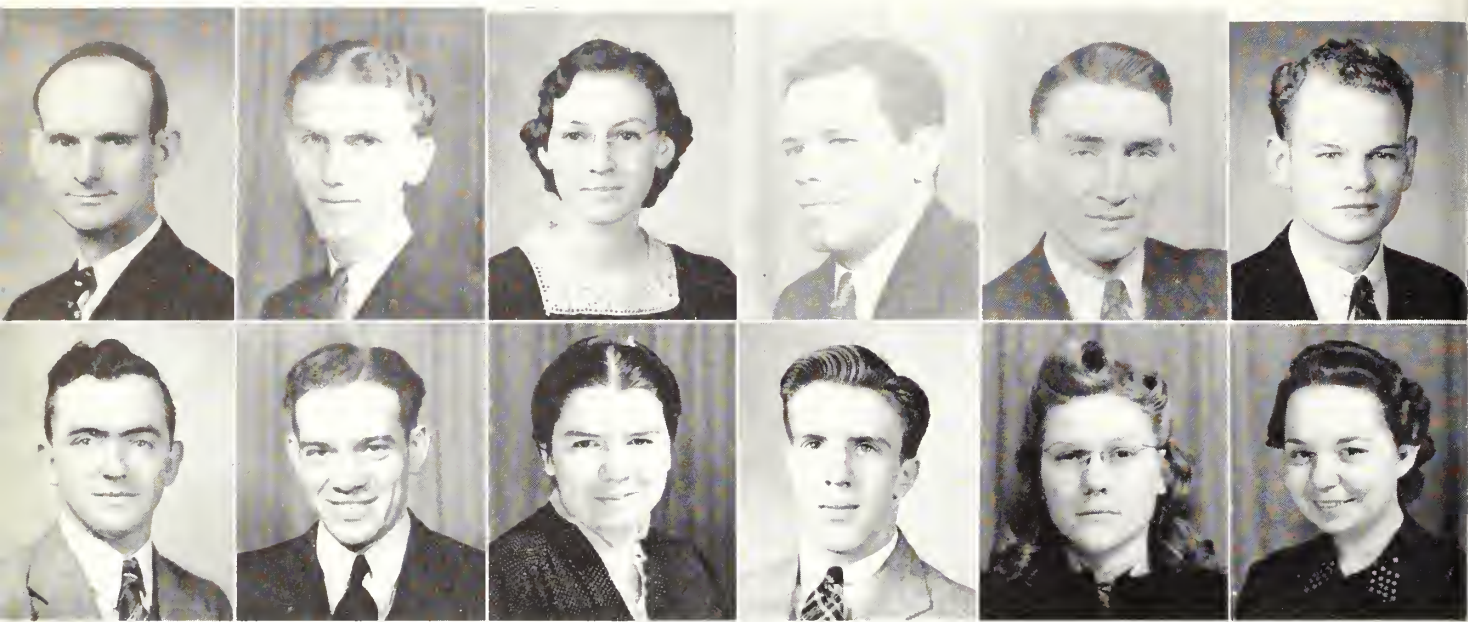
MARY STEENBERGEN Friendliest

KATHLYN HOWARD Most Popular

BETTY GOLDEN Most Attractive



FAVORITES



PROF. A. B. MACKY Faculty Advisor
 H. HARVEY HENDERSHOT Editor-in-Chief
 ALINE McDANIEL Co-Editor
 SETTLE SHAW Business Manager
 JOHN LAWWILL Assistant Business Manager
 OLIVER C. HUFF Sales Manager
 DAVID PATTEN Assistant Sales Manager
 FRANK H. ABSTON College Representative
 WILMA MOORE High School Representative
 PAUL KING Theological Representative
 MONTINE MAYHAN Fine Arts Representative
 RUTH E. JOHNSON Stenographer

The work on the 1941 "Darda" has been pleasantly and efficiently completed by the congenial staff which was elected by our student body. The staff has made vital steps toward a bigger and better annual. This is the first time in the history of the "Darda" that the Trevecca students have made their own pictures for the year-book. The untiring efforts of the staff have made it possible for the Southeastern Educational Zone to become acquainted with the activities of the school.

1941 DARDA STAFF

DIRECTORY OF OUR NAZARENE COLLEGES



PASADENA COLLEGE

PASADENA, CALIFORNIA

H. ORTON WILEY, D.D., S.T.D. President
MARIE H. HUFF Registrar

NORTHWEST NAZARENE COLLEGE

NAMPA, IDAHO

RUSSELL V. DeLONG President

BETHANY-PENIEL COLLEGE

BETHANY, OKLAHOMA

A. K. BRACKEN, M.A., D.D. President
WILLIS B. DOBSON Registrar

EASTERN NAZARENE COLLEGE

WOLLASTON, MASSACHUSETTS

G. B. WILLIAMSON, D.D. President

OLIVET NAZARENE COLLEGE

KANKAKEE, ILLINOIS

A. L. PARROTT, M.A., D.D. President
JACKSON O. RODEFFER Registrar

NORTHERN BIBLE COLLEGE

RED DEER, ALBERTA, CANADA

C. E. THOMPSON President



Photographs taken during the Kentucky-West Virginia and Tennessee Motorcades.

MOTORCADES

The motorcades to Trevecca from the Kentucky, West Virginia, and Tennessee Districts have been a great inspiration to the faculty and students as well as those who participated. The Kentucky and West Virginia Districts brought \$1,300.00 and 22 tons of provisions. The total amount of \$1,800.00 and 28,900 lbs. were brought by the Tennessee District.



WE ARE PRESENTING OUR ADVERTISERS IN THE FOLLOWING PAGES. THEY HAVE BEEN DEFINITE FACTORS IN THE PUBLICATION OF THIS ANNUAL AND WE KNOW THAT YOU WILL PATRONIZE THEM.

McCORD OPTOMETRISTS

315 FIFTH AVENUE, N.

NASHVILLE, TENN.

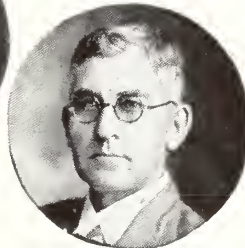
Eyes
Scientifically
Examined



L. G. McCord



J. W. McCord



J. T. McCord

Frames
Correctly
Fitted

If not able to come to the Office, Phone 6-0304

TERMS IF DESIRED

Member Nashville Academy of Optometry



"A Friendly Church"

FIRST CHURCH OF THE NAZARENE

PARIS, TENNESSEE

A Soul Saving Station

The Church and N. Y. P. S. Appreciates Trevecca

MISS MACY ABERNATHY, President

A Friendly Young People

When in Paris Visit with Us



B. W. MURPHY, Pastor



REV. ORVILLE L. MAISH
Pastor
Res., 2335 Dafe St.



"The Friendly Church"

YOU ARE ALWAYS WELCOME AT LOUISVILLE FIRST CHURCH

Twenty-Fourth and Howard Streets
Louisville, Kentucky

THE ALABAMA DISTRICT

Is wholeheartedly behind the program of



PAUL E. PITTS, District Superintendent
1202 W. 4th Terrace
Birmingham, Alabama

TREVECCA NAZARENE COLLEGE

A Group of
Young People that Boost and Attend
Trevecca Nazarene College



LEON CHAMBERS
District N. Y. P. S. President
Fairfax, Alabama

MISSISSIPPI DISTRICT CHURCH OF THE NAZARENE

REV. CECIL C. KNIPPERS
Superintendent

Yours for a GREATER TREVECCA

FIRST CHURCH OF THE NAZARENE

CLARKSVILLE, TENNESSEE

L. LEE GAINES
Pastor

1024 WASHINGTON STREET

THE WEST VIRGINIA DISTRICT

Is 100% back of the program of
TREVECCA NAZARENE
COLLEGE

"Onward With Christian Education
Is Our Cry"

E. C. ONEY
District Superintendent

CHARLESTON, WEST VIRGINIA

CHURCH OF THE NAZARENE

GEORGIA DISTRICT

REV. P. P. BELEW District Superintendent
REV. H. J. EASON District Chairman C. S. B.
REV. B. E. LeJEUNE District President N. Y. P. S.
MISS AURELIA MOORE District President W. F. M. S.

OUR DISTRICT WELCOMES TREVECCA TRAINED MEN

Compliments of
Radebaugh Lane, Optometrists
38 Arcade

Compliments of
A FRIEND

Compliments of
NEELY, HARWELL & CO.
Wholesale Dry Goods and Notions

Compliments
DR. J. M. TASSEY
Optometrist
Phone 6-8978
49 Arcade (Upstairs) Nashville, Tenn.

See **WHITE** and You'll See **RIGHT**
DR. J. H. WHITE
DR. CALLIE MAE WHITE

501 Hitchcock Building
Over Liggett's Drug Store Telephone 6-5970

ST. BERNARD COAL CO.
"Since 1870"

PORTER-CABLE
MACHINE COMPANY AGENCY
Telephone 6-4300
179 2nd Ave., No. Nashville, Tenn.

FIRST CHURCH OF THE NAZARENE

CHARLESTON, WEST VIRGINIA

A. J. FRANK Pastor

1140 Central Ave., Charleston, W. Va.

GEO. O. ARMSTRONG Sunday School Superintendent

509 Kanawha Turnpike, So. Charleston

MISS JEANETTE SHREEVES N. Y. P. S. President

Glenwood Ave., Charleston

OUR HEARTS, SUPPORT, and PRAYERS are for Trevecca Nazarene College

THE WEST VIRGINIA DISTRICT YOUNG PEOPLE

Are wholeheartedly in favor of
CHRISTIAN EDUCATION

Our Support is for Our Own
TREVCCA NAZARENE COLLEGE

GENE COCHRAN
District N. Y. P. S. President
Huntington, West Virginia

A home without books is like a house
without windows

THE METHODIST PUBLISHING HOUSE

BETHEL CHURCH OF THE NAZARENE

409 Trinity Lane Nashville, Tenn.

WILLIAM PECK, Pastor

Telephone 3-3636-J

STUDENTS AND FACULTY INVITED

TENNESSEE
Nazarene Young

G. B. BREESE

Tarry Ye—

Go Ye—

Win Ye—

11.4.P.S.

DISTRICT
Peoples Society

District Superintendent

Salvation

Education

Service

"Let no man

despise thy youth"

WOODBINE CHURCH OF THE NAZARENE

New location to be on Nolensville Road

"A Church With a Heart Interest"

JESSE A. MIDDENDORF Pastor

Trevecca Nazarene College

Miss Hollins (at ten o'clock): "Who didn't hang up their clothes when they went to bed?"

Steen (from under the blankets): "Adam."

Prof. Gresham: "Can any of you tell me what makes the Tower of Pisa lean . . ."

Delia Shaw: "I don't know or I would take some myself."

I know of a church at the
edge of the town
Where heaven and earth
seem to blend;
For within the wide door
waits the Christ we adore
With a blessing for all who
attend.

Then come to the church at
the edge of the town
And join with the worshiping
throng,
And tomorrow you'll face with
a confident grace
And a faith that is steadfast
and strong.

REV. S. W. STRICKLAND
M.A., B.D.
Pastor



GRACE CHURCH OF THE NAZARENE

2518 Gallatin Road
NASHVILLE, TENNESSEE

LEHMAN BROTHERS

QUALITY
GROCERIES



PHONE 6-5836

Murfreesboro at Elm Hill Road

▼

M. E. DERRYBERRY COMPANY

And

SPOT CASH COMPANY

Wholesale Grocers

NASHVILLE, TENNESSEE

▲

"CHEER UP"

MODEL LAUNDRY

MODEL CLEANERS

D. D. CANFIELD, Manager

Telephone 5-3114

THE KENTUCKY CLUB

Has only one goal:

To see Trevecca go forward and upward

Prof. Gresham: "When Sir Walter Raleigh spread his cloak in the mud, he made Queen Elizabeth happy."

Harvey H.: "Why? Was she a dry cleaner?"

HAD HELP

Miss Person: (looking over Josh Spooner's English composition): "I don't see how it's possible for a single person to make so many mistakes."

Josh (proudly): "It isn't any single person, teacher. Carrie helped me."

■

TIME OUT

Prof. Redford: "Young man, how many times have I told you to get to class on time?"

Chester Speck: "I don't know. I thought you were keeping score."

Compliments of

A FRIEND

COMPLIMENTS

HOLINESS LEAGUE

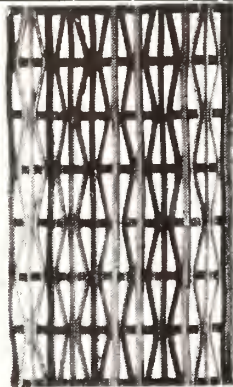
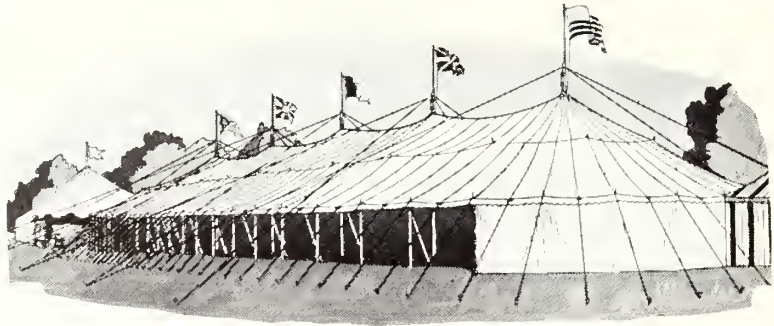
May Trevecca Ever Sail High
the Banner of Holiness

**Crown Tent
and Awning Co.**

936 Third Avenue, North
Nashville, Tenn.

GOSPEL TENTS
For Sale or Rent

FOLDING CHAIRS
For Rent



SANITARY MAT COMPANY

Nashville, Tennessee

Owned and operated by Trevecca Students

MATS FOR CHURCH AND BUILDING ENTRANCES

Made in Colors

SCHOOL CALENDAR

- Sept. 17—Registration.
- Oct. 3—High School Junior-Senior Reception.
- Oct. 10—College Junior-Senior Reception.
- Nov. 11-15—Dr. D. Shelby Corlett's lectures on Holiness.
- Nov. 13-14—Kentucky and West Virginia Motorcade.
- Nov. 21-22—Thanksgiving Holidays.
- Dec. 5-6—Final Examinations.
- Dec. 6—Registration for Winter Quarter.
- Dec. 19-31—Christmas Holidays.
- Feb. 4—Tennessee Motorcade.

Hymns of all Churches Each Friday Night 7:30
Over Station WSIX

DEAN'S SWELL SUITS

City Club HATS

Bona Allen SHOES

Furnishings

J. H. CASHION, Manager

217 4th Ave., N.

Nashville

PEACH'S LUNCH ROOM

A Clean, Comfortable Place to Eat
Your Choice of Well-Cooked Foods

405 Broadway

Phone 6-9485

Nashville, Tenn.

HERMITAGE HER-VITA FEEDS

Made in Nashville

Sold by Best Dealers Everywhere

3-1983

Phone 5-5061

JENNINGS TIRE AND BATTERY CO.

COOPER TIRES

Guaranteed in Writing

7th Ave., at Commerce

Phone 5-1214

PHILLIPS & BUTTORFF MANUFACTURING CO.

•
Everything for Dining
Room, Kitchen and
Nursery

•
ENTERPRISE
STOVES, FURNACES AND
STOKERS

•
Established 1858
217-23 3rd Ave., N. Nashville, Tenn.

... AN AVIATION CAREER
OFFERS YOU A GREAT FUTURE

•
Courses offered:
Aircraft Sheet Metal
Aircraft Steel Welding
Aircraft Army Test Welding

•

NASHVILLE AIRCRAFT SCHOOL

Y. M. C. A. Building Nashville, Tennessee

THE ENGRAVINGS IN THIS BOOK

Were Made by

The South's Foremost Annual Engravers

CAPITOL ENGRAVING COMPANY

134 Fourth Avenue, North

Nashville, Tennessee

THE TENNESSEE CLUB

OF TREVECCA NAZARENE COLLEGE

Has taken up arms to make their school a four-year college, a million-dollar campus, and a spiritual atmosphere that will be unexcelled.

WOOF! WOOF!

Doctor (to dog-bitten patient): "You have hydrophobia, man. It may prove fatal."

Jim Simpson (patient): "Then give me a pencil and paper."

Doctor: "For making your will?"

Simpson: "Will, nothing; I'm making a list of people I want to bite."

Josh Spooner: "Did I get my last shave here?"

Al Hadden: "I doubt it, we've only been in business two years."

4—Dresses, Coats, Suits—\$1

FREE DELIVERY

5-3158

TENNESSEE DRY CLEANERS

208 Shelby Avenue

AT YOUR GROCER'S

DON'T SAY BREAD

SAY . . .

HOLSUM!!!

Grace Church of the Nazarene

200 Sweetland Drive, Chattanooga, Tenn.

J. H. DEAL, Pastor

"The Church That Is a Friend to Everyone"

STROBEL'S MUSIC SHOP

Everything in Music—Musical Instruments

29 Arcade

Nashville, Tennessee

CAPITOL CITY MATTRESS CO.

OLD MATTRESSES MADE NEW

One-Day Service

Phone 3-0283

900 Main Street

CALENDAR

Mar. 5-6—Meeting of Board of Trustees.

Mar. 3-14—Revival with A. E. Kelly.

Mar. 6-7—Final Examinations.

Mar. 7—Registration for Spring Quarter.

Apr. 24—Darda Outing.

May 7—Prof. D. A. Yarbrough presented Miss Geneve Cunningham in Voice Certificate Recital.

May 8—High School Junior-Senior Banquet.

May 23—Fine Arts Recital.

May 25—Baccalaureate Sermon.

May 27-28—Final Examinations.

May 30—Commencement.

▼
COMPLIMENTS

OF

**FIRST NAZARENE
CHURCH**

510 Woodland Street

NASHVILLE, TENNESSEE

H. H. WISE

Pastor

Always a Welcome for the Students
▲

TREVECCA NAZARENE COLLEGE

LOCATED IN THE ATHENS OF THE SOUTH

The fastest growing school in the Church of the Nazarene with a safe and sound basis and a firm financial foundation.

OUR AIM

To be deeply spiritual and to indoctrinate the young people of the Southeastern Educational Zone in the doctrine of the Church of the Nazarene.

Trevecca is the first line of defense in the Church of the Nazarene in the Southeastern Educational Zone

Every member of the Faculty and Board of Trustees an earnest Christian.



COLLEGE
SCHOOL OF RELIGION
FINE ARTS
HIGH SCHOOL



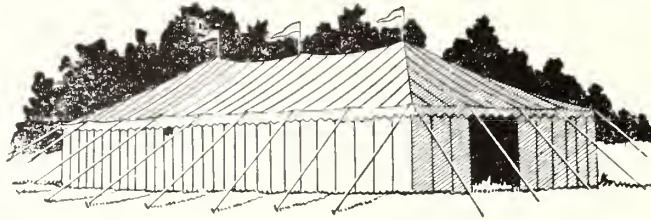
Write for Catalog Today A. B. MACKEY, President

"The Sun Never Sets on Trevecca Students"

GOSPEL
TENTS

Sale or
Rent

Folding Chairs
For Rent



Expert
Workmanship
First Quality
Fabrics

Satisfaction
Guaranteed
50 Years
Experience

NASHVILLE TENT & AWNING CO.

6-2578—6-6323

309-11 1st Ave., No.

Nashville, Tennessee

SUWANEE RIVER CAMP

"Way Down Upon the Suwanee River"

Held each July by workers that will prove a blessing and uplift to all who attend.

A Wholesome and Inspiring Atmosphere for Young People

For Information, Write:

MRS. A. E. BROWN, Lake City, Fla.

C. K. McKAY, President

THIS BOOK PRINTED

BY

BENSON PRINTING COMPANY

NASHVILLE, TENNESSEE





