

DARDA

1960





Digitized by the Internet Archive
in 2014

<https://archive.org/details/darda1960trev>



1960

Darda

TREVECCA NAZARENE COLLEGE
NASHVILLE, TENNESSEE



HELEN BURCH • EDITOR

SAMMY PHIPPS • BUSINESS MANAGER



THE *Spirit* OF TREVECCA

Many come and go through these hallowed halls, but the Spirit of Trevecca lingers with them as they face life, stalwart and God-fearing.



THE CLASSES WE ATTEND ARE ENCLOSED BY

a Spirit
OF LEARNING







OUR ACTIVITIES ARE ENCOMPASSED BY

a Spirit

OF COOPERATION





THE CHURCHES WE ATTEND ARE ENGROSSED WITH

a Spirit OF REVERENCE



THE PEOPLE



WE MEET ENCOURAGE

a Spirit OF FRIENDLINESS





Fine Arts Building



McClurkan Memorial Building

OUR BUILDINGS

Cafeteria



Administration Building





Mackey Library



Tidwell Hall

Hardy Hall



McKay Hall





Officers of the Board of Trustees, front row, left to right: Dr. John L. Knight, Dr. A. B. Mackey, Dr. Otto Stucki. Back row: Dr. V. W. Littrell, Rev. Victor Gray, Dr. Lloyd Byron.

THE BOARD OF TRUSTEES

OFFICERS OF THE BOARD

- DR. JOHN L. KNIGHT, Chairman
- DR. OTTO STUCKI, Secretary
- DR. EDWARD C. ONEY, Vice-Chairman
- REV. VICTOR E. GRAY, Treasurer

- Alabama**
- Rev. L. S. Oliver
 - Mr. R. L. Anderson
 - Mr. R. F. Bumpus
 - Rev. Gordon Winchester

- Florida**
- Dr. John L. Knight
 - Mr. H. C. Maupin
 - Rev. C. R. Moore
 - Mr. Arnold Price
 - Rev. T. Howard Warwick

- Mississippi**
- Dr. Otto Stucki
 - Mr. J. C. Towsley

- Virginia**
- Dr. V. W. Littrell
 - Rev. Ralph Schurman

- Eastern Kentucky**
- Rev. D. S. Somerville
 - Rev. Bennie Hulett
 - Rev. Asa Sparks

- Georgia**
- Rev. Mack Anderson
 - Rev. H. J. Eason
 - Rev. Bruce B. Hall
 - Mr. Sam Knox

- North Carolina**
- Dr. Lloyd B. Bryon
 - Mrs. Madelyn Wall

- West Virginia**
- Rev. Harvy Hendershot
 - Rev. C. Glenn Bowling
 - Rev. Roy T. McKinney
 - Dr. Edward C. Oney
 - Rev. J. C. Wallace

- East Tennessee**
- Rev. Victor E. Gray
 - Rev. L. B. Hicks

- Kentucky**
- Rev. D. D. Lewis
 - Rev. O. C. Huff
 - Rev. Dennis E. Wyrick
 - Rev. Oren D. Thrasher

- Tennessee**
- Rev. C. E. Shumake
 - Rev. J. E. Beckum
 - Mr. John T. Benson, Jr.
 - Rev. Edward F. Cox

- Alumni Representatives**
- Rev. John R. Browning
 - Rev. Claude W. Galloway

THE PRESIDENT

DR. A. B. MACKEY



If the spirit of Trevecca were symbolized by a fruit tree, it would be like the tree mentioned in the Bible—the tree that had twelve kinds of fruit. The evidences of the spirit of Trevecca are expressed in words, in thoughts, and in deeds.

The spirit of Trevecca reminds me of the proverb, "A word fitly spoken is like apples of gold in pictures of silver." The language of Trevecca is almost completely the language of courtesy, love, and kindness. Someone asked what language was spoken in a certain military organization, and the reply was "profane language." In my thirty-five years of acquaintance with Trevecca I have never heard any profanity among our students or faculty.

It is difficult to know what kinds of thoughts are in the minds of the personnel of Trevecca, but we have the confidence that a high proportion of the thinking is permeated with love and sympathy and obedience. The Scripture teaches that whatsoever a man thinketh in his heart so he is; a large number of our students evidence a spirit of high thinking.

The faculty who work for small salaries; students who give their time for Christian work; the district superintendents, pastors and constituency of the college who give their money to support Trevecca—all illustrate the spirit of devotion to Christian education.

—A. B. MACKEY, President

The president's home



The Mackeys and their nephew, Gene Dalton, relax at home





DONNIE JOEL SMITH
(1938-1959)

IN MEMORIAM

A TRIBUTE TO DONNIE SMITH

Some called him honorable,
Honorable in the deeds he did.
Some called him a master,
A master of that which he conquered;
One called him a prince,
A prince of all princes he numbered.

Noble names and words of goodness
Are said about him;
Yet, beautiful words and flowery phrases
seem so very dim—
Dim to the fact
That his Christian life and testimony
Were the things that really counted.
For his daily life, which was lived for Jesus,
Will continue to shine without a doubt.

Yes, we lost a hero, a friend,
A leader—one of conscientious mind;
But heaven has gained a jewel—
A jewel of a rare and precious kind.

—RUTH SHANNON



Professor Unruh and family at home



PROFESSOR RAMON UNRUH

DEDICATION

In his life the spirit of Trevecca is portrayed. He is a man of good character, a Christian gentleman revealed to us by his daily walk with God.

To PROFESSOR RAMON UNRUH, who has given himself in many ways as an instructor, leader, and friend, we dedicate this, the 1960 DARDA.



Spirit of Learning...

- INSTRUCTION

- CLASSES



ADMINISTRATION



ALEXANDER B. MACKAY
A.B., M.A., L.L.D.
President, Economics

HOMER JAMES ADAMS
A.B., M.A., Ph.D.
Dean of Arts and Sciences, History

WILLIAM M. GREATHOUSE
A.B., Th.B., M.A., D.D.
Dean of Religion, Theology



KOY WRIGHT PHILLIPS
B.S., Th.B., M.A., B.D.
Dean of Admissions, Biblical Literature, Theology,
Philosophy

J. LEON CHAMBERS
Th.B., M.A., B.D.
Dean of Students, Practical Theology, Bible, Theology

V. NEIL RICHARDSON
A.B., Th.B.
Business Manager, Personal Development



The faculty and administrative staff of Trevecca Nazarene College consist of highly educated professors who are dedicated to the cause of Christian education. Their interest in the students brings about a good understanding between the faculty and students. The Spirit of Trevecca is personified in the lives of our professors, and we give our full support to Trevecca and its excellent faculty and administration.



C. E. KEYS
A.B., Th.B.
Field Representative

AMY L. PERSON
A.B., M.A.
Registrar, English



LILA THRASHER MACKAY
A.B., M.A., B.S. in L.S.
Librarian, Library Science



JERRY G. COSTA
A.B., M.A.
High School Principal, Bible, Biology



FACULTY



CHARLES L. CHILDERS
A.B., B.D., M.A., Ph.D.
Biblical Languages, Bible, English

FRANKLYN WISE
A.B., M.Ed., Ph.D.
Director of Vocational Guidance,
Education, Christian Education, Bible



RAMON R. UNRUH
B.MUS., M.MUS.
Voice and Theory

WILLIAM H. HOWICK
Th.B., A.B., M.A., M.ED.
Education, Psychology, Director of
Teacher Education



MAUDE ALLEN STUNCK
A.B., M.A., Ph.D.
Languages, Bible

ALTA LINDSAY REDFORD
B.S., M.A.
Mathematics, Biology



MAURY ENGLISH REDFORD
B.S., Th.B., M.A., B.D.
Biblical Languages, Church History

MABEL COONER GREENE
A.B., M.A.
Speech



ADRON HOLLINS PHILLIPS
A.B., M.A.
English, French, Sociology,
Speech

HAROLD F. HAMMOND
B.S., M.A.
Piano, Music Theory, Social Studies

FACULTY

LEWIS PENNINGTON
Th.B., A.B., M.A., Ph.D.
Education, Psychology, High School
Social Studies

CARY T. DUCKETT
A.C.A., A.B., M.A.
High School English, Book Store
Manager

BARBARA McCLAIN
A.B., B.MUS., M.MUS.
Piano, Music Theory

MILDRED FORMAN CHAMBERS
A.B., M.A.
Biology, English

THOMAS HEMMERLY
A.B., M.A.
Chemistry, Biology

ELIZABETH THOMPSON
SPRUILL
A.B.
Principal of Training School,
Education and Reading Improvement

JOHN ALLAN KNIGHT
B.A., M.A., B.D.
Church History

EULA JEAN STEPHAN
A.B.
Bookkeeper

MARIE PEERY
A.B.
Personal Development, High School
Mathematics, Head Resident of Hardy
Hall



STAFF



ULDINE STEWART, R.N.
School Nurse
CHARLES KLINSTIVER, SR.
Cafeteria Manager

WALTER WHITE
Head Resident, Tidwell Hall
MRS. HUGH MARTIN
Maintenance Supervisor

THELMA BRUCKNER
Head Resident, McKay Hall
HUGH MARTIN
Maintenance Supervisor

ERNESTINE RICHARDSON
Postmistress



MILDRED McDOWELL
Office of the President

LaNELLE COWAN
Office of the Dean of Arts and Sciences

MARTHA GRAY
Office of the Dean of Admissions
ESTHER BLUME
Office of the Dean of Admissions

CAROL LIGHT
Office of the Registrar

SUE HAYES
Office of the Dean of Students

MARQUITA THOMAS
Office of the Dean of Religion

OFFICE ASSISTANTS

Seated: Jean Stephan, bookkeeper; Bess Pearson, Barbara Williams, Ruby Spear, Judie Noel, Linda Taylor, assistants in the bookkeeper's office.

JOYCE WOODARD
General Office

CAROLYN MOORE
Office of the Business Manager

Barbara Greer, Marita Slifer, Earline Mason, Carolyn Kennedy, Office of the Field Representative.





PROFESSOR K. W. PHILLIPS
Director of Personnel Services

The personnel services offered by Trevecca Nazarene College are of great value to the students as well as to the faculty. It shows the interest shown in each individual student.

The personnel services are under the direction of Professor K. W. Phillips and the vocational guidance director is Dr. Franklyn Wise.

The goal of this organization is to provide guidance in accordance with student needs, the program including group and personal counseling for freshmen, special personnel services for all other students, and a student counselor program for the Residence Halls.

P E R S O N N E L S E R V I C E S

- PROFESSOR K. W. PHILLIPS Director of Personnel Services
- MISS ULDINE STEWART, R.N. Health Counseling
- MRS. PAUL GREENE Speech Improvement Service
- DR. HOMER J. ADAMS Military and Recreations Guidance
- PROFESSOR V. NEIL RICHARDSON . Employment Guidance and Veterans' Problems
- MRS. M. E. SPRUILL Reading Improvement Service
- MRS. A. B. MACKAY Social Poise and Etiquette Problems
- PROFESSOR and MRS. K. W. PHILLIPS Marriage Counseling
- DR. FRANKLYN WISE Director of Vocational Guidance



DR. FRANKLYN WISE
Director of Vocational Guidance



The senior officers look at annuals in our president's new home

SENIOR CLASS OFFICERS

BRUCE HADDIX	President
HAROLD DERRYBERRY	Vice-President
RUBY SPEAR	Secretary
FAYE STEWART	Treasurer
JEANETTE WILLIS	Student Council Representative
BEVERLY WOODS	Reporter
MRS. MABEL GREENE	Sponsor

We prepared baskets for the needy at Christmas.

We dressed like Puritans at the Thanksgiving Banquet.

We acted like third graders during Health Week





PAUL AGNER

B.S., Biological Science
"Only a look into the past gives us a true glimpse of the future."
Christian Workers Association 1, 2; Missionary Prayer Band 1, 2; Science Club 2, 3, 4; Teachers Club 3, 4; Florida Club 1, 2, 3, 4.



LLOYDETTE BEARD

A.B., Education and Psychology
"Politeness is to human what warmth is to wax."
Austin Peay State College.



ROBERT BROWN

A.B., History
"Our ideals are our better selves."
Christian Workers Association 1, 2, Treasurer 2; Music Club 1, 2; Clio Society 1, 2, 3, 4; Teachers Club 4; Alabama Club 1, 2, 3, 4.

SENIORS

VIRGINIA BRUCKNER

A.B., English
"Opportunity is the best captain."
Literary Club 3; Teachers Club 3; Mississippi Club 3, 4; Sunflower Junior College 1, 2.

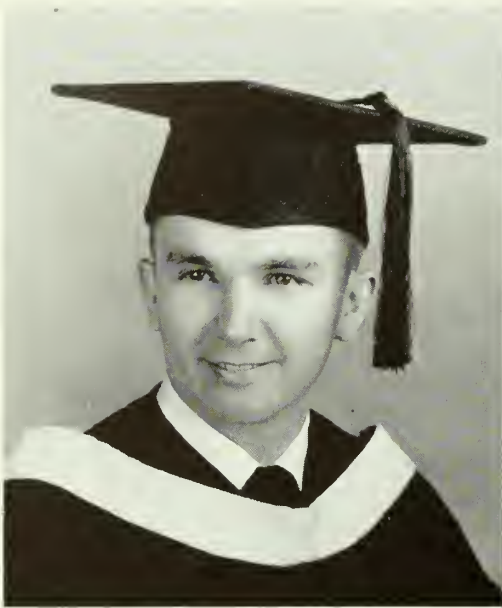
SHIRLEY BULA

A.B., English
"Great thoughts like great deeds need no trumpet."
Literary Club 2, 3, 4; Speech Club 2, 3, 4; Teachers Club 3; Mississippi Club 1, 2, 3, 4; Vice-President 4; Class President 3; A Cappella Choir 1; Girl's Chorus 3.

HELEN BURCH

A.B., English
"The reward of a thing well done is to have done it."
Christian Workers Association 1, 2, 3, 4; Trevecca Athletic Association 1, 2, 3, 4; Literary Club 4; Music Club 1, 2, 3, 4; A Cappella Choir 1, 2, 3, 4; Teachers Club 3; Virginia Club 1, 2, 3, 4; "Trev-Echoes" Editor 3; DARDA Editor 4; Student Council 3, 4; Who's Who in American Colleges and Universities.





ODELL CALDWELL

A.B., Religion
 "He's true to God, who's true to man."
 Christian Workers Association 1, 2, 3, 4; Ministerial Association 1, 2, 3, 4; Missionary Prayer Band 1, 2; Clio Society 3, 4.



ANN CLAYTON

A.B., Biology
 "Knowledge is the eye of desire and can become the pilot of the soul."
 Christian Workers Association 1, 2, 3, 4; Trevecca Athletic Association 1, 4; Missionary Prayer Band 1, 2, 3, 4; Honor Society 2, 3, 4; Science Club 1, 2, 3, 4; Achievement Award in Scholarship 1; Class Scholarships 1, 2, 3, 4; Junior Marshal; DARDA Staff 4; Senior play 4.



HAROLD DERRYBERRY

A.B., Religion
 "You can tell the character of every man when you see how he receives praise."
 Ministerial Association 1, 2, 3, 4; Vice-President 3; President 4; Philosophy Club 3, 4; Literary Club 1, 2; Clio Society 4; Class Vice-President 4.

SENIORS

BERMA DU BOSE

A.B., Christian Education
 "Music exalts each joy, allays each grief."
 Christian Workers Association 1, 2, 3; Trevecca Athletic Association 4; Missionary Prayer Band 1; Music Club 1, 2, 3, 4; Georgia Club 1, 2, 3, 4; A Cappella Choir 1, 2, 3, 4; Trio 3; All-School play 1.

WILLIAM ELKINS

A.B., Education and Psychology
 "The best of all men are those who live their creed."
 Christian Workers Association 1, 2, 3; Music Club 2, 3, 4; East Kentucky Club 1, 2, 3, 4; A Cappella Choir 1; Men's Chorus 3, 4; Teachers Club 3, 4.

MABEL FARRAR

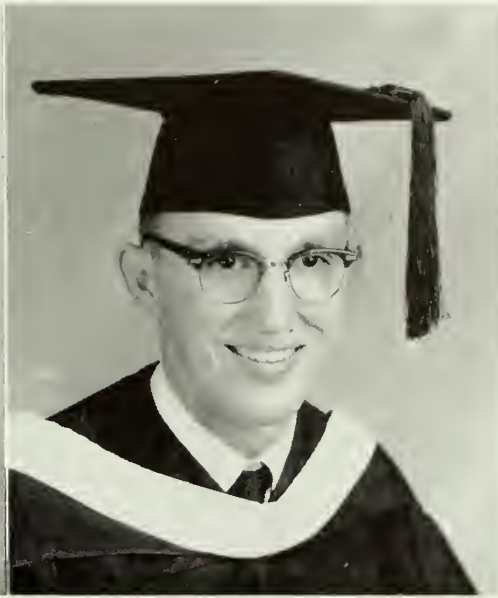
A.B., Education and Psychology
 "Good character is property; it is the noblest of all possessions."
 Elementary school teacher, Shelbyville, Tennessee.





BETTY FICHTNER

A.B., Education and Psychology
"To be trusted is a greater compliment than to be loved."
Christian Workers Association 2; Florida Club 1, 2, 3, 4.



BRUCE HADDIX

A.B., Mathematics
"He profits most who serves best."
Christian Workers Association 1, 3, 4; Trevecca Athletic Association 1, 2, 3, 4; Speech Club 4; Science Club 1; Teachers Club 4; West Virginia Club 1, 2, 3, 4; Class President 4.



WINSTON HATCLIFF

A.B., Religion
"A good reputation is more valuable than money."
Christian Workers Association 1, 2, 3, 4. Visitation Chairman 2, 3; President 4; Ministerial Association 1, 2, 3, 4; Missionary Prayer Band 1, 2, 3, 4; Vice-President 2; North Carolina Club 1, 2, 3, 4; Chairman 3; Class Vice-President 3; Who's Who in American Colleges and Universities; Residence Halls Council 2, 3, 4, Chairman 3, 4.

SENIORS

KEMP HIGGINBOTHAM

A.B., English
"I shall show that the place does not honor the man, but the man the place."
Christian Workers Association 1, 2; Trevecca Athletic Association 1, 2, 3, 4; Tennessee Club 1, 2, 3, 4; Memphis State; Class President 1, 2; Student Council Secretary 3; Student Council President 4; A Cappella Choir 1, 2; General Activities Award 3; Who's Who in American Colleges and Universities; Residence Halls Council 2, 4.

BETTY HELMS

A.B., Education and Psychology
"All experience is an arch to build on."

FRANCES HOWICK

A.B., Education and Psychology
"Nothing great was ever achieved without enthusiasm."
Missionary Prayer Band 1; Honor Society 4; Music Club 1; Teachers Club 3; North Carolina Club 1, 2, 3, 4; Pasadena City College; A Cappella Choir 1, 2, 4; Girls Chorus 3.





HAROLD HUGHES

A.B., Mathematics

"Then on! Then on! Where duty leads, my course be onward still."

Christian Workers Association 1; Trevecca Athletic Association 1, 2, 3, 4, President 2, 3; Science Club 1, 2; Ramblers Club 1, 2, Chairman 1, 2.



JOYCE HUGHES

A.B., Religion

"Genius does what it must, and talent does what it can."

Christian Workers Association 1, 2, 3, 4; Ministerial Association 1, 2, 3, 4, Secretary 3, 4; Speech Club 2, 3, 4; Music Club 2, 3; Residence Halls Council 2, 3; Saturday Evening Program Chairman 3; Olivet Nazarene College.



LOUISE IRWIN

B.S., Biological Science

"The surest way not to fail is to determine to succeed."

SENIORS

PAUL JACKSON

A.B., Speech

"Speech is the small change of silence."

Christians Workers Association 1, 2, 3, 4; Trevecca Athletic Association 1, 2, 3, 4; Ministerial Association 2, 3, 4; Speech Club 1, 2, 3, 4; President 3, 4; Peabody College; Quartet Travel; A Cappella Choir 1, 2, 3, 4; Who's Who.

PATSY JONES

A.B., English

"Beauty is eternity gazing at itself in a mirror."

Christian Workers Association 1, 2, 3; Trevecca Athletic Association 1, 2; Literary Club 4; Teachers Club 2, 3, 4; Kentucky Club 1, 2, 3, 4; Secretary 3; Class Reporter 2; Class Secretary 3; Student Council 4; "Trev-Echoes" Editor 4.

WILLIAM KLAUSNER

A.B., Religion

"Courage is that virtue which champions the cause of right."

Ministerial Association 1, 2, 3, 4; Clio Society 4; Mississippi Club 3, 4.





CHARLES KLINSTIVER, JR.

A.B., History

"The secret of success is constancy to purpose."

Trevecca Athletic Association 3; Clio Society 3, 4; Manager of Trevecca T-Room.



ELEANOR KNOTTS

A.B., Education and Psychology

"Outward poise through inward peace."
Honor Society 3, 4; Clio Society 4; University of Tennessee.



GARNER LAWSON

A.B., Religion

"Great men are they who see that the spiritual is stronger than material."

Christian Workers Association; Ministerial Association 4; Missionary Prayer Band 1.

SENIORS

JEAN LEDFORD

A.B., Education and Psychology

"Live truly, and thy life shall be a great noble creed."

Christians Workers Association 1; Trevecca Athletic Association 1, 4, Reporter 4; Literary Club 4; Music Club 1, 2; Teachers Club 3; East Tennessee Club 1, 2, 3, 4; Secretary 2; A Cappella Choir 1, 2; Class Treasurer 2.

HELEN LEEPER

A.B., Education and Psychology

"The mildest manners and gentlest heart."

Christian Workers Association 1, 2; Trevecca Athletic Association 1, 2, 3; Literary Club 3; Speech Club 1; West Virginia Club 1, 2, 3; A Cappella Choir 1, 2; Class Reporter 2; "Trev-Echoes" Staff 2; Residence Halls Council 2; DARDA Feature Editor 3; Student Council Secretary 3; Attitudes Award 2; Citizenship Award 3.

ANN McDONALD

A.B., Education and Psychology

"The hand that hath made you fair hath made you good."

Christian Workers Association 1; Trevecca Athletic Association 1; Music Club 1; Teachers Club 4; West Virginia Club 4; Morris Harvey College.





CHARLES MELTON

A.B., Religion

"I have always thought the actions of men the best interpreters of their thoughts."
 Christian Workers Association 1; Ministerial Association 1, 2, 3, 4, Vice-President 4; Missionary Prayer Band 1, 2, 3, 4; Philosophy Club 3, 4, President 4; Speech Club 1; West Virginia Club 1, 2, 3, 4.



PEGGY JO NEAL

A.B., Education and Psychology

"Everywhere in life, the true question is not what we gain but what we do."
 Christian Workers Association 1, 2, 3, 4; Missionary Prayer Band 2; Music Club 1, 2, 3, 4; Clio Society 4; Teachers Club 4; South Carolina Club 1, 2, 3, 4; Winthrop College; A Cappella Choir 1, 2, 3, 4.



LILLIAN PICKETT

A.B., Education and Psychology

"God has placed no limit on intellect."
 Christian Workers Association 1, 2, 3, 4; Ministerial Association 1; Missionary Prayer Band 2; Honor Society 1, 2, 3, 4, Vice-President 3; Speech Club 1, 2; Teachers Club 3, 4; Tennessee Club 1, 2, 3, 4.

SENIORS

GLENDA PUTNAM

A.B., Education and Psychology

"Friendship redoubleth joys and cutteth griefs in half."
 Christian Workers Association 1; Missionary Prayer Band 1; Literary Club 4; Speech Club 1, 3, Secretary 3; Teachers Club 4; Georgia Club 1, 2, 3, 4, Chairman 2; Class Treasurer 3.

BARBARA RALPH

B.S., Biological Science

"In friendship I early was taught to believe."
 Christian Workers Association 1, 2; West Virginia Club 1, 2, 3; Peabody College.

BEULAH RIDDLE

A.B., Education and Psychology

"Go forth under the open sky and list to Nature's teachings."
 Christian Workers Association 1, 2, 3, 4; Missionary Prayer Band 4; Science Club 1; Kentucky Club





FRANCES SHAW

A.B., English
 "Silence is golden."
 Christian Workers Association 1, 2, 3; Missionary
 Prayer Band 2; Literary Club 1, 2, 3, 4; Teachers
 Club 4; Georgia Club 1, 2, 3, 4.



DOROTHY SHIELDS

A.B., Education and Psychology
 "Green calm below, blue quietness above."
 Christian Workers Association 1; Clio Society 4;
 Ramblers Club 1; Mississippi Club 3; Olivet
 Nazarene College.



PHILIP SHOMO

A.B., Religion
 "Who rises from prayer a better man, his
 prayer is answered."

SENIORS

TROY SLAY

A.B., Religion
 "I profess not talking; only this: Let each
 man do his best."
 Missionary Prayer Band 1, 2; Mississippi Club 2.



RUBY SPEAR

A.B., English
 "The best of blessings, a contented mind."
 Christian Workers Association 1, 2, 3; Trevecca
 Athletic Association 1, 2; Missionary Prayer Band
 1; Literary Club 1, 2, 3, 4; Speech Club 3, 4;
 Secretary 4; Clio Society 2, 3, 4; Teachers Club 4;
 Tennessee Club 1, 2, 3, 4; Secretary 4; Class Play 4;
 Class Secretary 4.



JIM STAGGS

A.B., Religion
 "As happy a man as any in the world, for
 the whole world seems to smile upon him."
 Christian Workers Association 1, 2, 3, 4; Ministerial
 Association 1, 2, 3, 4; Missionary Prayer Band
 2, 3, 4; East Tennessee Club 1, 2, 3, 4, President 4;
 A Cappella Choir 3.





FAYE STEWART

A.B., Education and Psychology
 "Society sayeth the text is the spice of life."
 Trevecca Athletic Association 1, 2, 3; Speech Club
 1, 2; Music Club 3; Teachers Club 3, 4; Tennessee
 Club 1, 2, 3, 4; Secretary 1; Class Reporter 3;
 Class Treasurer 4; "'Trev-Echoes'" Staff 2; All-
 School Play 1; Class Play 4.



ROBERT TURNER

A.B., Religion
 "A little nonsense now and then is relished
 by the wisest men."
 Christian Workers Association 1, 2, 4; Trevecca
 Athletic Association 1, 2, 4; Ministerial Associa-
 tion 1, 2, 3, 4; Reporter 2; Treasurer 4; Philosophy
 Club 4; Secretary 4; Speech Club 2; Florida Club
 1, 2, 3, 4; Reporter 2.



NADA ULM

A.B., Education and Psychology
 "Virtue is like a rich stone—best simply set."
 Christian Workers Association 1, 2, 3, 4; Mission-
 ary Prayer Band 1, 2, 3; Literary Club 1, 2; Teach-
 ers Club 3, 4; Georgia Club 1, 2, 3; Florida Club 4.

SENIORS

ARLENE UNRUH

A.B., Education and Psychology
 "Let me live in a house by the side of the
 road and be a friend to man."

JEANETTE WILLIS

A.B., English
 "To do easily what is difficult for others is a
 mark of talent."
 Christian Workers Association 1, 2, 3; Missionary
 Prayer Band 1; Literary Club 1, 2, 3, 4; Vice-Presi-
 dent 4; Teachers Club 3; Tennessee Club 1, 2, 3, 4;
 Student Council Treasurer 4; Residence Halls
 Council 2, 3, 4; Student Council Representative 3, 4

BEVERLY WOOD

A.B., Education and Psychology
 "Virtue and genuine grace in themselves
 spread what no words can utter."
 Trevecca Athletic Association 1, 2, 3, 4; Speech
 Club 3; Reporter 3; Clio Society 4; Vice-President
 and Treasurer 4; Teachers Club 3, 4; Mississippi
 Club 1, 2, 3, 4; Class Reporter 4.





LUCILLE JONES
A.B., English



EUGENE SHELTON



DAVID WOFFORD
Th.B., Religion

SPECIAL GRADUATES

The moving of the president's old home—named Smith Hall in memory of Donnie Smith



The presentation of the magazine rack for the Student Center





President Melvin Welch gives instructions to his officers

JUNIOR CLASS OFFICERS

MELVIN WELCH	President
EDITH MINGLEDORFF	Vice-President
SYLVIA YOUNG	Secretary
JOYCE WOODARD	Treasurer
CAROLYN WILEY	Student Council Representative
LINDA TAYLOR	Reporter
MISS BARBARA McCLAIN	Sponsor

We sponsored the Get-Acquainted party

The Halloween party gave us scares galore

She "took" me during Twirp Week



JUNIORS

First Row:

CHUCK ACHESON

Tenor . . . Promising Future . . . Student
Pastor

JOE ADKISSON

"To know him is to like him" . . . Honor
Student . . . True Friend

JIMMY ALLEN

Easy Going . . . Religion in Practice . . .
Cheerful



Second Row:

RICHARD BELLOMY

Questioner . . . Husband . . . Energetic

ANN BENSON

Talkative . . . Winsome Smile . . . Good-
natured

BARRIE BRACKEN

Devoted Christian . . . Tall . . . Shining Light



Third Row:

DARLENE CAIN

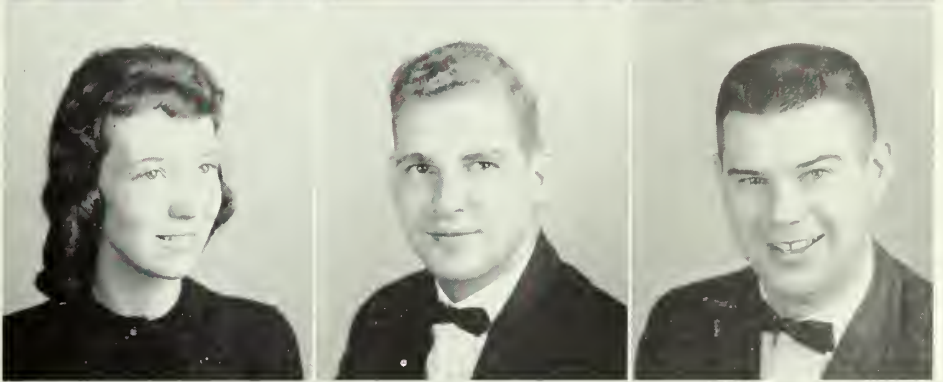
Gaiety . . . Radiating Smile . . . Flashes of
Fun

LYN CASSEDY

Ideal Husband . . . Curls . . . Pastor

PAUL CLECKNER

Fun-maker . . . Helpfulness Unlimited . . .
Coffee Breaks at Greer's



Fourth Row:

MARY COMBS

Transferee from K.M.B.I. . . . Reliable

SIDNEY COMFORT

Song Bird . . . Full-o-pep . . . Mississippian

MARSHALL COPEN

Promising Minister . . . Progressive . . . Chris-
tian in Purpose and Motive



Fifth Row:

NANCY COPLEY

"Up" . . . Hard worker . . . Friendly

RAYMOND COWAN

Clean-cut Gentlemen . . . Determined . . .
Eligible Bachelor

KAREN COX

Pleasant . . . Songstress . . . "Ader"



Sixth Row:

LE ROY DAVIS

Texan . . . thoughtful . . . available

EUGENE FIGGE

Married . . . Printer . . . Deep-thinker

GENE FRAME

Transferee from K.M.B.I. . . . Student Pastor
. . . Likable





JUNIORS

First Row:

OREN FRAIZER

Quiet . . . Conscientious . . . Genuine

ERNEST GATES

Willing Worker . . . Man of Few Words . . . Faithful to God

FRANKLIN GILLIAN

Salvation Army Worker . . . Likes Girls . . . Mischievous



Second Row:

MARTHA GRAY

Christian Worker . . . Sincere . . . Efficient Secretary

BARBARA GREER

"Pop's" assistant . . . Independent . . . Sports-woman

THERESA GUNTER

Cheerful . . . Considerate . . . "Tooken"



Third Row:

ORVILLE HALL

Answering a Call . . . Witness . . . Thinker with Christ

LEA JOY HARNER

Elementary school teacher . . . All smiles . . . Sweet

RAYMOND HASSINGER

Future missionary . . . Married . . . Ohioian



Fourth Row:

RONALD HEDGES

Ambitious Student . . . Gentle Firmness . . . Socrates II

MARGARET JONES

Library Bound . . . New Yorker . . . Steady Worker

RUBY JONES

Jolly . . . Casual . . . Unselfish



Fifth Row:

RUDY JONES

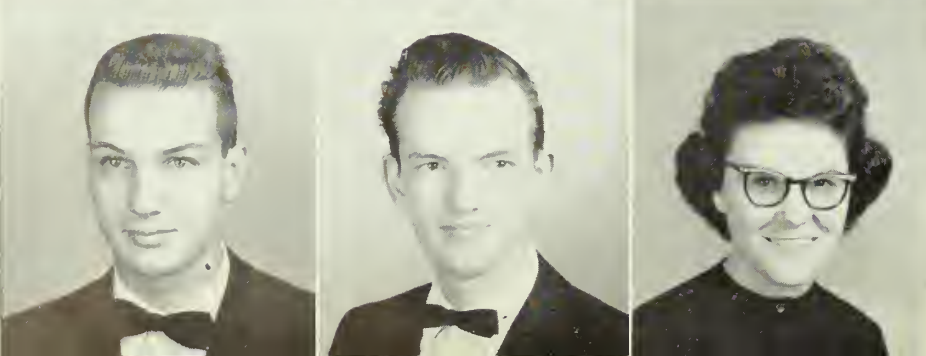
Steady Job and Steady Girl . . . Handsome . . . Prankster

CHARLES KLINSTIVER, SR.

Dietician . . . Money Saver . . . Steak Sizzler

CHARLENE KNOX

Christian Ideals . . . Mary Jane's Roommate . . . "Adolf"



Sixth Row:

GARY KOCH

Persistent . . . Humble . . . Ambassador for Christ

ORVAL LEJEUNE

Business-like . . . Triumphant Smile . . . Capable Leader

PHYLLIS LOBB

Talented Soprano . . . Likely to Succeed . . . Feminine

JUNIORS

First Row:

ED McDONALD

Singer . . . Called of God . . . Spontaneous
Laughter

JUDITH MAGNUSSON

"A" Student . . . Frank . . . Monitor

HERMAN MEEKS

Floridian . . . True Christian . . . "Daddy of
Three"



Second Row:

EDITH MINGLEDORFF

Dependable . . . Exact . . . Studious

ROBERT MITCHELL

Home Spun Philosopher . . . "Dr. Wise, I
have a question" . . . Subtle Wit

JOE MOSES

Photographer . . . Colligiate . . . Witty



Third Row:

BESS PEARSON

Golden-tongued and Silver-voiced . . . En-
gaged . . . Busy-bee

SAMMY PHIPPS

Everybody's Friend . . . Good Looking . . .
Clever

WENDELL POOLE

P. K. . . . Bass . . . Sense of Humor . . .
Yankee



Fourth Row:

THOMAS REID

Capable . . . Consistent Christian . . . Called
Missionary

YVONNE RHODES

Musical . . . Married . . . Sincere Friendliness

MELBA ROBBINS

Walky-talky . . . Unpredictable . . . Fixed
Asset in the T-Room



Fifth Row:

EVERETT ROBERTSON

Serious . . . Pastor . . . Man Around the
House

SUE RYLAND

Sweet-spirited . . . Lady-like . . . Poised

PHYLLIS SARK

Shy . . . Unruffled . . . Good-natured



Sixth Row:

RUTH SHANNON

Blonde . . . Unique . . . Talented

RUTH SIX

Red-head . . . Spirited . . . Practical Service

DONALD SMITH

Ambitious . . . Understanding . . . Scholar





JUNIORS

First Row:

JAMES STALEY
 Proud Papa . . . Consistent . . . Trumpeter
GERALD TABERS
 Sincere . . . Quiet . . . Dependable
LINDA TAYLOR
 Spoken For . . . Pianist . . . Talented

Second Row:

RAY THOMPSON
 Pastor . . . Married . . . Humble Spirit
RITA TURNER
 Quiet . . . Likeable Personality . . . Easy-going
IDA VAUGHN
 Reserved . . . Thoughtful of Others . . . Patient

Third Row:

MELVIN WELCH
 Junior Prexy . . . "Accounting Brain" . . .
 "Wha-ya-say, huh?"
CECIL WELLS
 Optimist . . . Ideal . . . Reliable
WALTER WHITE
 Dorm Papa . . . Considerate . . . Christian Witness

Fourth Row:

CAROLYN WILEY
 Kentuckian . . . Carries Responsibility Well
 . . . Seamstress
JOYCE WOODARD
 Petite . . . Keeper of the Class Money . . .
 Happy Co-ed
SYLVIA YOUNG
 "A Tickler of the Ivories" . . . Counselor
 . . . "Now, Ya'll"



**VALENTINE
 BANQUET**





CHIEF COOKS



LOOKING PRETTY



NOW, WITCH-DOCTOR, TELL ME

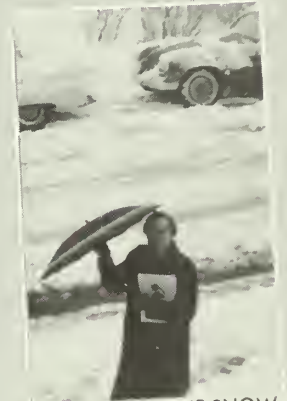
OUR



SMILES GALORE



HAPPY FAMILY



WALKING IN THE SNOW

FACULTY



MAKE YOURSELF COMFORTABLE



THAT'S DR. GREATHOUSE



NOW, LET ME SEE



Sophomore officers pose in front of Trevecca's new neon sign

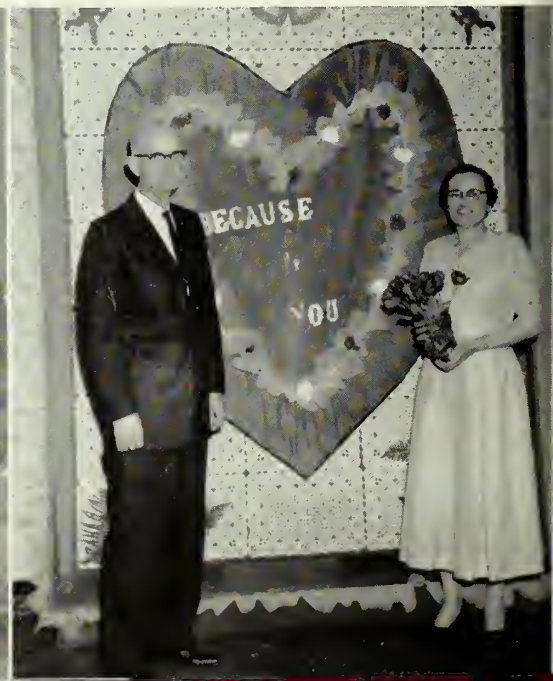
SOPHOMORE CLASS OFFICERS

GENE COOK	President
WILLIAM RODDY	Vice-President
CAROL LIGHT	Secretary
ANN BOHANNON	Treasurer
DON PITZER	Student Council Representative
DENNY HAGE	Reporter
MRS. LEON CHAMBERS	Sponsor

We sponsored the Freshman-Sophomore Banquet.

We presented a skit during Etiquette Week

Dr. and Mrs. Mackey celebrated their twenty-fifth wedding anniversary at the Valentine Banquet.



SOPHOMORES

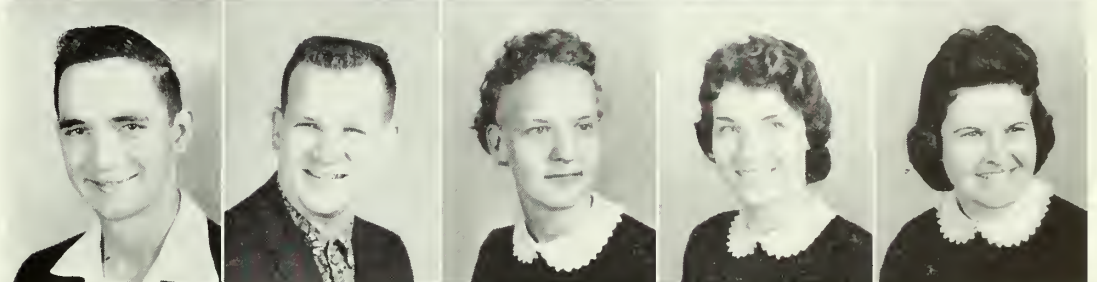
Beverly Adams
 Janice Baker
 Ann Bohannon
 Philip Bowles
 Grace Bright



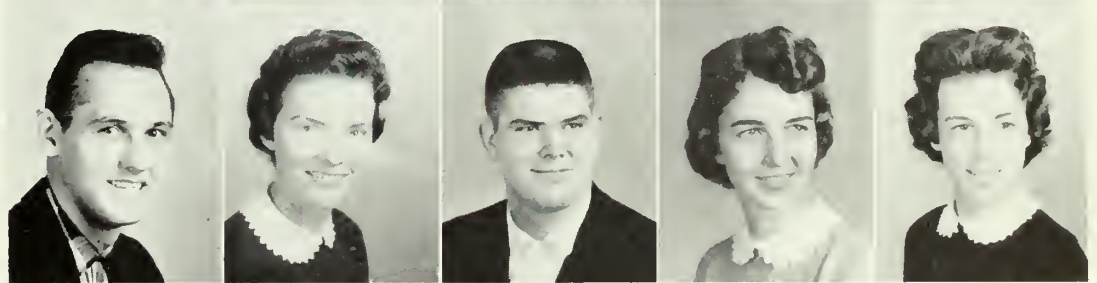
Robert Brim
 Carol Brown
 Joan Brown
 Marlene Brumbleloe
 Nancy Casto



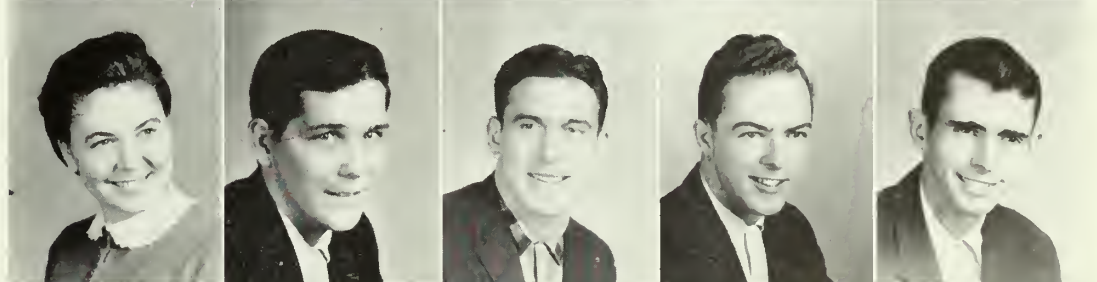
Robert Chasen
 Wayne Clancy
 Chloe Combs
 Lois Conkey
 Myrl Conley



Bob Cook
 Donna Cook
 Gene Cook
 LaNell Cowan
 Sandra Cox



Sarah Culpeper
 Bob Davis
 Garnold Dennis
 Ronald Doolittle
 Davie Edmondson



Don Elder
 Ann Fleming
 Marilyn Fosky
 Thomas Fowler
 Robert Furniss



SOPHOMORES

Rosalie Gardner

Juanita Geise

Barbara Goodman

Miriam Goodwin

June Gray

Virginia Gray

Terrell Haddix

Dennis Hage

Kenneth Hamrick

Dan Hatfield

Sue Hayes

Patsy Hayes

Kenneth Heaton

James Hess

Robert Holderby

Duane Houston

Miriam Hudgins

Kermit Hudson

Kenneth Irwin

Bobbie Jones

Gene King

Linda Kolar

Anna Kolio

Robert Lancaster

Carol Light

Dwayne Little

John McCauley

Lorraine Murray

Mariellan Nelson

Bill Nichols

Annice Parsons

Gail Patrick

Curtiss Pearson

Linda Pierce

Don Pitzer

SOPHOMORES



Mitchell Quick
 Esther Provance
 Cecil Rhodes
 Edith Rhodes
 Mary Beth Richardson

William Roddy
 Joyce Rudd
 Al Ruschel
 Nancy Rushing
 Robert Russum

Mary Savage
 Geraldine Sharpton
 Joyce Shaw
 Keith Silvernail
 Jesse Sims

Eddie Sisson
 Betty Smith
 Hugh Smith
 Jo Ann Smith
 Gerald Spear

Glaphre Spencer
 Richard Stephens
 Ed Stiles
 Mary Jane Still
 Doris Sweeney

Charles Thomas
 Marquita Thomas
 William Thompson
 Don Turner
 Joy Turney

Barbara Williams
 Deborah Williams
 Al Wood
 Gerald Woods
 Glenn Woods



Freshman officers pause for a coke

FRESHMAN CLASS OFFICERS

DALE MELTON	President
SHARRON MARLIN	Vice-President
MARY HELEN LANE	Secretary
JAMES VARIAN	Treasurer
JANICE HAY	Student Council Representative
PAT TAYLOR	Reporter
PROFESSOR RAMON UNRUH	Sponsor

We struggled over entrance exams



The sophomores initiated us



We helped Santa present gifts at Christmas



FRESHMEN

Donnie Adams
 Janice Adams
 Lloyd Allison
 Ed Allred
 Larry Altman

 Langdon Ammen
 Jerry Andrews
 June Arender
 Wanda Arkley
 Douglas Askew

 Malcolm Babione
 Helen Barnes
 Alena Beasey
 Jeanette Beel
 James Bender

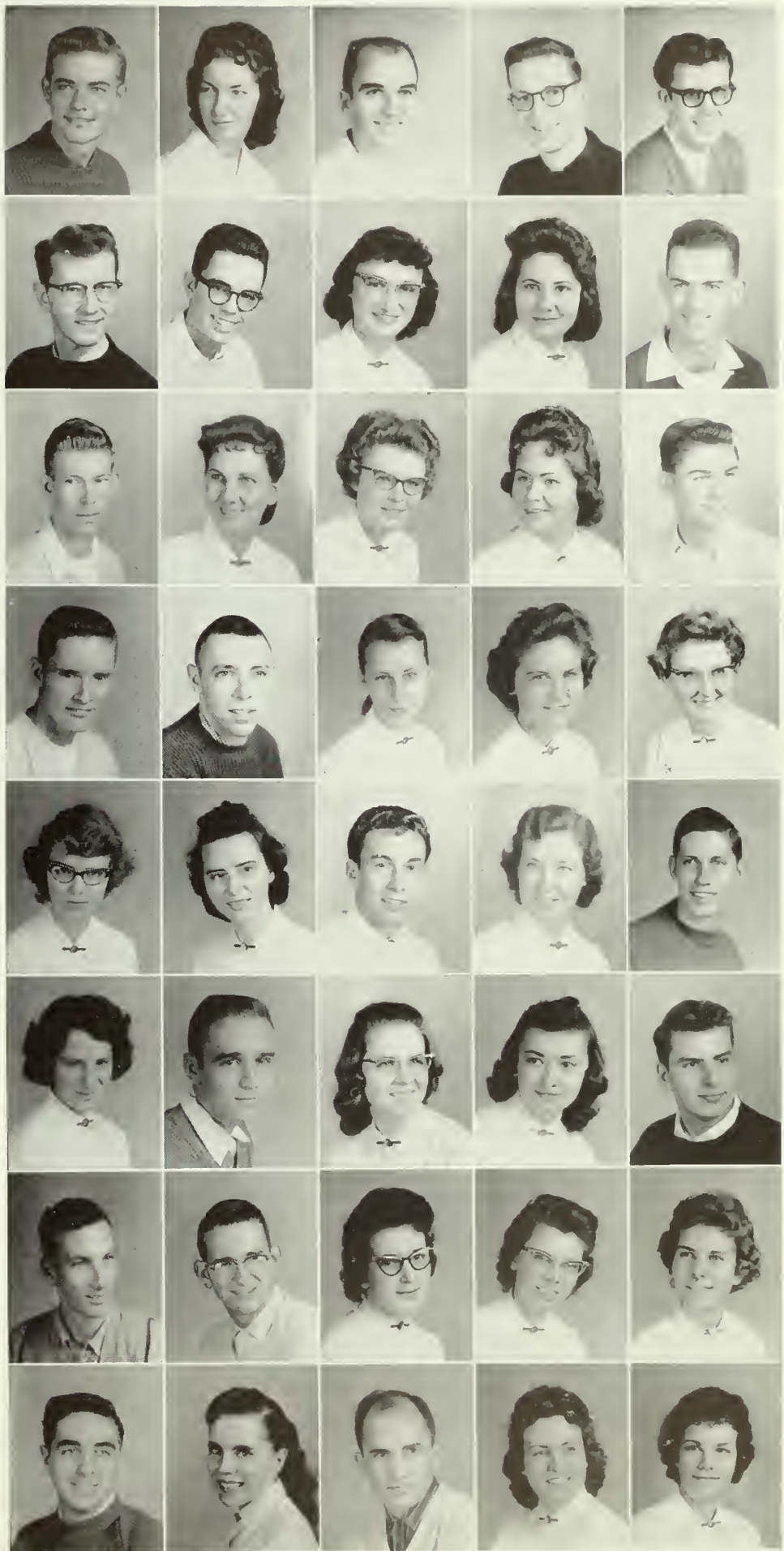
 Randall Biggs
 Donald Blankenship
 Esther Blume
 Myrtle Bolin
 Rosena Mae Booker

 Linda Bratton
 Ruth Bright
 Dave Brown
 Esther Burnett
 David Butler

 Nancy Butler
 Walter Butler
 Jackie Carroll
 Peggy Carson
 Kenneth Clack

 John Clayton
 Lowell Clyburn
 Carolyn Collins
 Carol Cook
 Norma Cornelius

 Paul Crew
 Evangeline Crites
 Orville Cummings
 Shirley Daugherty
 Donna Davis





FRESHMEN

- Shirley Davis
 William Davis
 Laverne Deel
 Darrell Dennis
 Geraldine Dilly
 Robert Dixon
 Byron Dollar
 Dorothy Jean Downing
 Doris Drake
 Donald Eads
 Kenneth Eady
 Linda Elkins
 Eugene Fadelay
 Jack Farish
 Ernest Farmer
 Leslie Farthing
 Walter Fisher
 Ruth Frey
 Geraldine Fry
 Earl Frye
 Harold Furniss
 Janice Galford
 Patricia Galloway
 Emory Garner
 Martha Godby
 Brenda Gould
 David Gray
 Sue Hayden
 Anita Hamilton
 Nancy Haufler
 Janice Hay
 Paul Heins
 Kenneth Hemmerly
 Don Henderson
 Paul Hetrick
 Everett Higginbotham
 Donna Holt
 JoAnn Hood
 Tressa Howes
 Edith Hussey

FRESHMEN

Alfred Hyde

Marjorie Jeffcoats

Lawrence Jenkins

Yvonne Johnson

Deirdre Jones

Iris Patricia Jones

Hilda Kea

Jennie Keith

Howard Kelly

Carolyn Kennedy

Ronald Kennedy

Joe Kerr

Bill Kirby

Rae Kohser

Lois Kolar

Mary Helen Lane

Rachel Lanier

Paul Lee

Nancy Leigh

Edwin LeJeune

Gene Leviner

Marilyn Litton

Evelyn Loyd

Bobbie Joel McCleskey

Margaret McDonald

Mary Alice McGill

Larry McGranahan

Betty McKay

Margaret McMeans

Harold McWhorter

Sharron Marlin

Earline Mason

Barbara Medina

Dale Melton

Pat Mercer

Allen Midcap

Travis Middleton

Ilene Miles

Judith Miley

Jeanette Mitchell





FRESHMEN

Clayton Mobley
 Carolyn Moore
 John Moore
 Mary Elizabeth Morrison
 Margie Muncey

Beverly Musgrave
 Sandra Nedrow
 Judie Noel

Sharon Norrick
 Joyce Palmer

Judith Parrish
 Jean Partin

Eva J. Perdue
 Aldor Peterson
 Judy Phillips

Marian Powell
 Mary Pratt

Louise Preece
 Nathan Price
 Audrey Propst

Cecil Pugh
 Bill Putnam
 Brenda Reynolds
 John Rice
 Shirley Rife

Margaret Roe
 Lucille Rowe
 David Scutt
 Mary Ruth Sharpton
 Marita Sue Slifer

Bob E. Smith
 Linda Smith
 Richard Smith
 Marsha Steele
 Sharon Steele

Uldine Stewart
 Geraldine Tanner
 Betty Lou Taylor
 John Taylor
 Patsy Taylor

FRESHMEN

Winston Thaxton
 Roberta Thomas
 John Thompson
 Sylvia Thrasher
 Mary Lou Tiemann

Mary Toombs
 Albert Truesdale
 Ann Tucker
 James Van Hook
 James Varian

Nancy Walker
 Betty Wallace
 Eldon Ward
 Fred Ward
 Charles Warhurst

Joy Nell Warhurst
 Phyllis Warren
 Richard Waterman
 Wade Westbrook
 Glenn Wheaton

Jerry Wheeler
 Mary Jane Whigham
 Patricia White
 Mary John Williams
 Janet Willis

Gene Wiseman
 Gloria Witherspoon
 Judy Woodard
 Billy Jo Wooten
 Howard Wright

Rebecca Young



JUNIOR THEOLOGICAL STUDENTS



Delbert Cain
 Clifford Cruver
 Richard Hayes
 Arthur Leezer

Walter Mann
 William Naille
 Wendell Rainey
 Robert Wilson

SPECIAL STUDENTS



Lucille Baker
 James Craig
 Juanita DuBose
 Maurice Evans

Jane Frey
 Mrs. Patricia Hall
 Natalie Hall
 Archie Lin

Barbara Ruschel
 Don Smith
 Nelzene Wofford



HIGH SCHOOL CLASSES

THE SENIOR CLASS

CAROL ALLISON

"Character is simply habit long continued." Tennessee; Married to Lloyd Allison; Plans to attend college at Trevecca.

EDNA RUTH BLACKMON

"Music hath charm to soothe a troubled breast." Tennessee; Treasurer of the Senior Class; Senior Superlative; Plans to pursue a musical career.

JOE CARR

"A sound mind in a manly body." Ohio; T.A.A. Member; Plans to attend Olivet and enter the evangelistic field.

ROGER COSTA

"Vigor, vitality, vim and punch—that's pep!" Tennessee; T.A.A. Member; Senior Class President; Senior Superlative; Attended Trevecca four years; Plans to attend Trevecca and become a teacher or doctor.

ELAINE EVANS

"Sweet her manner, quiet her way." Plans to enter Trevecca College.

BEVERLY McFILLAN

"Frank and open minded; she is trustful and trustworthy." Louisiana; Plans to attend college at Trevecca; Ambition is to be a home-maker.

JUDY GIBSON

"Hers is the quiet smile of sincere friendliness." Kentucky; Senior Representative to Student Council; Ambition is to be a singer in the evangelistic field.

SHANNON GOINS

"A sense of duty marks her actions." Kentucky; Attended Trevecca Junior and Senior year; Plans to enter the business world.

DARLENE HALL

"One who seems of cheerful yesterdays and confident tomorrows." Cuba; Plans to enter college at Trevecca and become a missionary nurse.

JOHN HALL

"He can work, he can play, he can be serious, he can be gay." Cuba; Senior Superlative; Plans to attend Trevecca and become a missionary doctor.

PATRICIA HALL

"The sincere alone can recognize sincerity." Cuba; Senior Superlative; Plans to attend Trevecca and become a missionary nurse.

BRENDA HIGHLANDER

"Modest, undaunted, and true." West Virginia; Plans to attend college and major in history; Ambition is to teach.





Senior Officers: Edna Ruth Blackmon, Judy Gibson, Carol Roberson, Roger Costa.

GARY JONES

"As good an all-around fellow as you have ever seen." South Carolina; Plans to attend Trevecca and become a minister.

RUBY MITCHELL

"Wit that can call forth smiles even from mourners." Florida; Will be getting married in July; Ambition is to be a good housewife.

JUDY MOBLEY

"A faithful friend is the medicine of life." Tennessee; Senior Superlative; Plans to work; Ambition is to be a housewife.

GLORIA NASH

"So patient, peaceful, loyal, loving, pure." Tennessee; Plans to attend college at Trevecca and go into missionary work.

CAROLYN NICHOLS

"As merry as the day is long." Michigan; Senior Superlative; Plans to take a business course; Ambition is to be a housewife.

CARLYN GARTH PETTY

"There's honesty, manhood, and good fellowship in thee"

MARIE PRICE

"We are charmed by neatness of person." Plans to attend Trevecca College; Married to Nathan.

ROY RAGSDALE

"A little nonsense now and then is relished by the wisest of men." Alabama; Plans to attend college at Trevecca.

BEVERLY RILEY

"Gentle in manner, strong in performance." Kentucky; Plans to go into nurses training and also be a housewife.

CAROL ROBERSON

"Two-thirds frolic, one-third fun, and the rest just ordinary girl." Florida; Senior class Secretary; Senior Superlative; Ambition is to be a housewife.

MARY ANN SWINK

"Courteous, kind, and full of glee." Indiana; Attended Trevecca Junior and Senior years; Student Council Secretary; Senior Superlative; Ambition is to go into social service.

FRANK WARD

"I would far rather be called good than fortunate." Tennessee; Attended Trevecca Junior and Senior years; Senior Class Vice-President; Will be working for WSIX-TV; Ambition is to own a new Corvette.

SENIORS NOT PICTURED

FRANK HAWKS

"Not a loud talker but a deep thinker." Kentucky; Plans to make a career out of the Navy or Army.

JAMES LASLEY

"A man, a friend, a gentleman, and a jolly good fellow." Plans to attend college at Trevecca and be a pastor; Senior Superlative.



THE UNDERCLASSMEN



Top: Lois Conkey, High School Secretary
 Bottom: Sitting on the stairs, having fun



First Row:

- BAUCOM, EDDINE Freshman
- BAUER, JOHNNY Junior
- BEELER, SUE Junior

Second Row:

- CAIN, SUE Sophomore
- COOK, DUANE Sophomore
- COTTRELL, FRANCES Junior

Third Row:

- DALTON, GENE Freshman
- DAVIS, DAVID Junior
- DENNIS, CAROLYN Sophomore



First Row:

- DONEGAN, BEVERLY Junior
- DURLAND, ARCHIE Freshman
- FLY, WILLIAM Special Student
- GOMER, RAY Sophomore
- JONES, YVONNE Freshman
- KELLY, ALMA JEAN Junior
- McDOWELL, FAYE Junior

Second Row:

- MOBLEY, DONNA Freshman
- RICHARDSON, CAROL Sophomore
- RICHARDSON, VICTOR Junior

- ROBERTSON, TERRY Sophomore
- RODGERS, MARK Freshman
- ROUSE, HERMAN Special Student
- SLAY, RUFUS Junior

Third Row:

- SMITH, AUBREY Freshman
- SMITH, RALPH Sophomore
- STAGGS, HENRY Junior
- STAGGS, JERRY Freshman
- UNRUH, KAREN Freshman
- WARD, DAVID Junior
- WELLS, LOIS Sophomore



Most Likely to Succeed
 JAMES LASLEY, CAROL ROBERSON



Wittiest
 JOHN HALL, CAROLYN NICHOLS



Most Studious
 CARLYN PETTY, PAT HALL



Most Popular
 ROGER COSTA, EDNA RUTH BLACKMON

HIGH SCHOOL SUPERLATIVES

Most Athletic
 JUDY MOBLEY, ROGER COSTA



Best All Round
 MARY ANN SWINK, CARLYN PETTY





Left to right: Judy Gibson, Henry Staggs, Faye McDowell, Lois Wells, Karen Unruh, Professor Jerry Costa. Seated: Mary Ann Swink

HIGH SCHOOL STUDENT COUNCIL

Henry Staggs has served as a very able president of the Student Council and Mary Ann Swink did an excellent job as secretary. Each homeroom representative worked hard for his class.

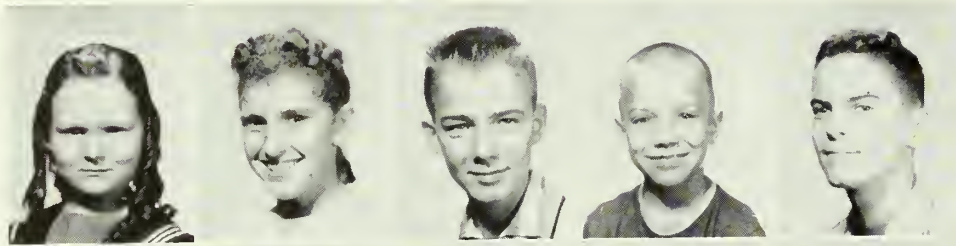
They sponsored the annual Christmas party and this proved to be fun for all.

Their sponsor, Professor Jerry Costa, assisted to the best of his ability and did his part in improving the government of the school.

OFFICERS

HENRY STAGGS	President
MARY ANN SWINK	Secretary
JUDY GIBSON	Senior Representative
FAYE McDOWELL	Junior Representative
LOIS WELLS	Sophomore Representative
KAREN UNRUH	Freshman Representative
PROFESSOR JERRY COSTA	Sponsor

DEMONSTRATION SCHOOL



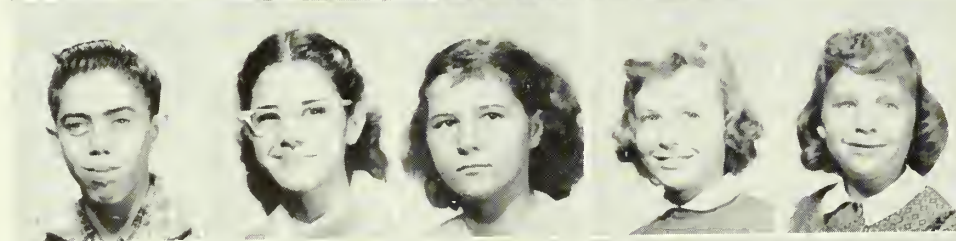
First Row: Sherry Angle, Esther Costa, Fred Allen Davis, Jonathan Eby, David Givens



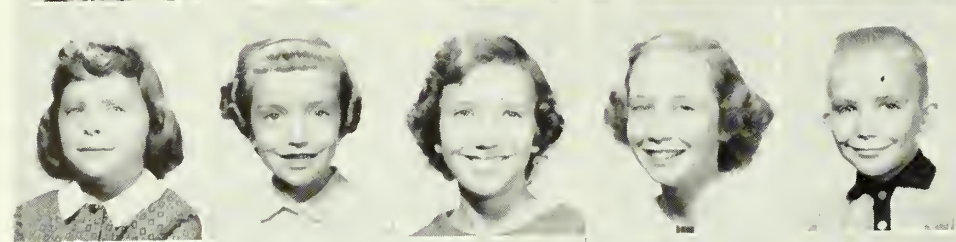
Second Row: Jimmy Gomer, Carl Grooms, Janet Hall, Barbara Hunley, Bracken Ingram



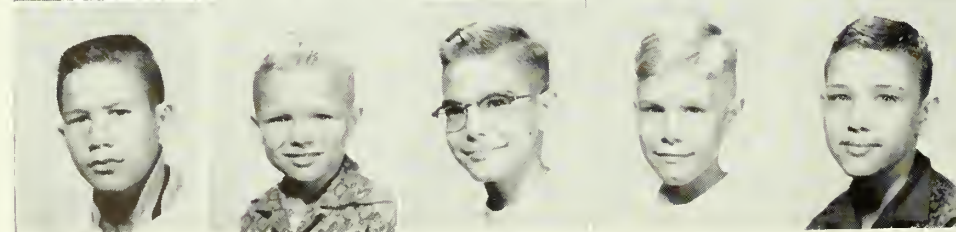
Third Row: Gloria Jones, Ray Jones, Dwayne Kirkus, Ruth Ann Klinstiver, Patricia Mann



Fourth Row: Mitchell Mann, Ellen Phillips, Joyce Robertson, Martha Rodgers, Pam See



Fifth Row: Pat See, Joy Spruill, Linda Spruill, Mae Spruill, Mendell Spruill



Sixth Row: Mike Sullivan, Roy Thompson, David Unruh, Rickey Unruh, Gerald York

SUMMER SCHOOL

T.N.C.'s campus takes on a "new life" in the summertime with her flowers and grassy lawn. The students and faculty alike all seem to be one big happy family as they work together. Summer school offers an opportunity to take a more concentrated study in less time and in better conditions. Let's go to summer school. Why not?



Some of the faculty relax at a picnic.

Professor Phillips and Dr. Adams cut the watermelons.



Nancy Walker and Edith Rhodes study despite the temptation in the background.





Spirit of Cooperation....

- ACTIVITIES
- ORGANIZATIONS
- HONORS



STUDENT ADVISORY COUNCIL



KEMP HIGGINBOTHAM
Student Council President



ORVAL LeJEUNE
Student Council Secretary



DR. HOMER J. ADAMS
Sponsor

The student governmental organization of our school is The Student Council. Its duties consist of the direction of periodic organization of student clubs, co-ordination of student activities of the year, assisting in planning Friday evening programs, and acting as the chief agency of liaison between faculty and students.

The opening activities in September are under the supervision of the Student Council. At registration time campus cars are registered for efficient traffic law enforcement. All campus elections are held by the Student Council. Also it provides the Spring Quarter Lectures.

In these and many other ways the Student Council directs campus affairs.

OFFICERS

- KEMP HIGGINBOTHAM Student Body President
- ORVAL LeJEUNE Secretary
- HELEN BURCH DARDA Editor
- PATSY JONES Trev-Echoes Editor
- JEANETTE WILLIS Senior Representative-Treasurer
- CAROLYN WILEY Junior Representative
- DON PITZER Sophomore Representative
- JANICE HAY Freshman Representative
- WINSTON HATCLIFF C.W.A. Representative
- WENDELL POOLE T.A.A. Representative
- HENRY STAGGS President of H.S. Student Council
- MARY ANN SWINK Secretary of H.S. Student Council
- DR. HOMER J. ADAMS Sponsor



Members of the Student Council at work

First Row: Winston Hatcliff, Wendell Poole, Helen Burch, Patsy Jones, Jeanette Willis.

Second Row: Carolyn Wiley, Don Pitzer, Janice Hay, Henry Staggs, Mary Ann Swink.





HELEN BURCH
Editor



SAMMY PHIPPS
Business Manager

T H E D A R D A

We hope that you have enjoyed reliving the Spirit of Trevecca through these pages.

The staff has worked hard this year and has been most co-operative. Carolyn Wiley served as an efficient assistant. Bess Pearson is responsible for the literary portion of the book and Sue Hayes, along with Ann Clayton, put the organization section together. Jeanette Mitchell, with the help of Louise Irwin, did an excellent job as sports editor. Ruth Shannon and Sylvia Young have been our very able class editors with the help of JoAnn Smith. Joyce Woodard served as feature editor with the help of Edith Mingledorff and Sharron Marlin was our snap shot photographer. Roger Costa represented the high school department. Joyce Shaw and Norma Cornelius did a good job typing manuscript for the DARDA. Joe Moses and Wayne Clancy were our very efficient photographers.

Sammy Phipps served as business manager with Melvin Welch as his assistant. Thanks again, Staff, for helping us portray the Spirit of Trevecca through these pages.

—Helen Burch



Helen Burch and Carolyn Wiley look over the dummy

STAFF

HELEN BURCH	Editor
SAMMY PHIPPS	Business Manager
CAROLYN WILEY	Assistant Editor
MELVIN WELCH	Assistant Business Manager
BESS PEARSON	Literary Editor
SUE HAYES	Organization Editor
RUTH SHANNON	Class Editor
SYLVIA YOUNG	Class Editor
JOYCE WOODARD	Feature Editor
JEANETTE MITCHELL	Sports Editor
ROGER COSTA	High School Editor
JOYCE SHAW	Typist
NORMA CORNELIUS	Typist
JOE MOSES	Photographer
WAYNE CLANCY	Assistant Photographer
SHARRON MARLIN	Snap Shot Photographer
ANN CLAYTON	Associate Worker
LOUISE IRWIN	Associate Worker
EDITH MINGLEDORFF	Associate Worker
JO ANN SMITH	Associate Worker
MRS. K. W. PHILLIPS	Editorial Advisor
MR. V. NEIL RICHARDSON	Business Advisor



Top Left: Feature Editor, Joyce Woodard, with Sharron Marlin, and Edith Mingledorff work on snapshots.

Top Right: Class Editors Ruth Shannon and Sylvia Young compare notes
Bottom Left: Bess Pearson, Literary Editor, instructs Joyce Shaw, Typist, about write-ups.

Bottom Right: Sue Hayes goes over the organization section with JoAnn Smith and Ann Clayton.

Sammy Phipps checks with Melvin Welch, assistant, on the ads.

Sports Editor, Jeanette Mitchell, checks on layout with Norma Cornelius, Roger Costa and Louise Irwin.

Joe Moses, Photographer, and his assistant, Wayne Clancy, look over the photographs.





PAT JONES
Editor



JOE MOSES
Business Manager

TREV - ECHOES



Pat and Doris mourn the fact that deadline was yesterday and "no articles."

"Trev-Echoes is out," is the excited cry of the students when Trevecca's bi-monthly publication comes out.

Since 1945 this up-to-date newspaper has been the mirror of campus life. Through the years the editors have striven for better publications. 1960 has been one of the best years. Assigning articles, proofreading, taking ads, drawing up the dummy, and trying to cover all the news are a few of the tasks behind the scenes.

STAFF

- PAT JONES Editor
- JOE MOSES Business Manager
- DORIS SWEENEY Assistant Editor
- JOANN SMITH Managing Editor
- MARY HELEN LANE Typist
- MARGARET McDONALD Typist
- MRS. K. W. PHILLIPS Editorial Advisor
- MR. V. NEIL RICHARDSON Business Advisor



Top: Mrs. Phillips and Pat Jones look over the ads with Joe Moses, Business Manager.
 Bottom: Pat goes over dummy with Doris Sweeney, assistant

Doris Sweeney, assistant

The Journalism Class looks at TREV-ECHOES

Pat goes over layout with JoAnn Smith, managing editor.





MUSIC CLUB

The Music Club, composed primarily of music majors and minors, has been busily engaged in numerous activities throughout the year. Several luncheon and breakfast meetings were held at which outside speakers brought inspiring talks on subjects devoted to musical value.

The club was also in charge of playing music from the

McClurkan Tower during the Christmas season, and it co-sponsored the Christmas Program, "The Lost Star," with the Speech Club.

The purpose of this club is to further the appreciation of music among students at Trevecca College.

OFFICERS

- EDITH MINGLEDORFF President
- SYLVIA YOUNG Vice-President
- SUE HAYES Secretary

- JEANETTE MITCHELL Treasurer
- ED LeJEUNE Reporter
- PROFESSOR RAMON UNRUH Sponsor

The highlight of the year's activities was the joint presentation of "The Lost Star" in song and drama, given with the Music Club during the Christmas season.

Other activities included luncheon meetings at which out-

side speakers presented different phases of speaking, participation in the W.C.T.U. Oratorical Contest, and an extemporaneous speech contest among our own students.

OFFICERS

- PAUL JACKSON President
- KENNETH HAMRICK Vice-President
- RUBY SPEAR Secretary

- JOYCE SHAW Treasurer
- JOAN BROWN Reporter
- MRS. MABEL GREENE Sponsor

SPEECH CLUB



LITERARY CLUB



The purpose of the Literary Club is to promote a further appreciation and enjoyment of literature for prospective teachers of English.

The activities this year included luncheon meetings, the sponsoring of a lecturer, and films.

OFFICERS

MARY JANE STILL President
 JEANETTE WILLIS Vice-President
 DORIS DRAKE Secretary-Treasurer

LaNELLE COWAN Reporter
 MISS AMY PERSON Sponsor

The Science Club is an organization which continues to be one of the most active clubs on campus.

The activities for this year have included an outing to Percy Warner Park, a trip to Snell Dale, monthly attendance at the audition films and lectures, and a camping trip.

The projects include beautifying the campus area east of the cafeteria and refilling the fire extinguishers on campus.

The purpose of the club is to help its members, who are science majors and minors, to increase their knowledge of science.

OFFICERS

DAVIE EDMUNDSON President
 LOUISE IRWIN Vice-President
 MIRIAM GOODWIN Secretary

WAYNE CLANCY Treasurer
 ANN BOHANNON Reporter
 MRS. LEON CHAMBERS Sponsor



SCIENCE CLUB



STUDENT WIVES

The Student Wives organization, under the sponsorship of Miss Person, enjoyed a year filled with activities. Their weekly meetings each Monday evening were varied. For two evenings a month they devoted their time to the study of "The Shepherdess." One evening was missionary study. The faculty wives entertained once a month in one of the homes.

This was a time of fellowship and discussion of some phase of homemaking such as budgeting and floral or table arrangement. A Christmas party with gift exchange was given by one of the girls. The year closed with a picnic at the park where all the families enjoyed an evening of fellowship.

OFFICERS

- MRS. ROXANNA HINTON President
- MRS. JEANNINE KOCH Vice-President
- MRS. SHELBY GALLOWAY Secretary

- MRS. EULA WEST Treasurer
- MISS AMY L. PERSON Sponsor

"The Story of Trevecca," presented in a series of articles in our school paper, has been one of the outstanding contributions of the Clio Society this year. Other activities have included several luncheons with special speakers emphasizing some subject of historic value, a Founders Day Display in the

McClurkan Building, and the planting of new trees on campus. This has been a very interesting and active year for this group. For those especially interested in history, the Clio Society has offered an opportunity for an increased appreciation, as well as for various activities in the field.

OFFICERS

- BOBBY MITCHELL President
- IDA VAUGHN Secretary

- BEVERLY WOOD Treasurer
- DR. HOMER J. ADAMS Sponsor

CLIO SOCIETY



FUTURE TEACHERS OF AMERICA



The Future Teachers Club, in its second year as an organized club, is composed of major and minor students from the second largest department at Trevecca, Education-Psychology.

The main activity of the club is to furnish current data on state requirements, and to sponsor lectures with an educational emphasis.

OFFICERS

JOSEPH ADKISSON President
 PHYLLIS LOBB Vice-President
 CAROLYN MOORE Secretary-Treasurer

JUDY MILEY Reporter
 PROFESSOR WILLIAM HOWICK Sponsor

The "Philosophy Forum," which is the name chosen for the Philosophy Club, was organized last year for the purpose of encouraging appreciation of philosophy. The activi-

ties include lectures and discussion of the problems in philosophy.

OFFICERS

CHARLES MELTON President
 ROBERT TURNER Secretary

PROFESSOR LEON CHAMBERS Sponsor



PHILOSOPHY CLUB



A L A B A M A C L U B

SYLVIA YOUNG Chairman
SUE HAYES Secretary
PROFESSOR RAMON UNRUH Sponsor



E A S T E R N K E N T U C K Y C L U B

DWAYNE LITTLE Chairman
MYRL CONLEY Secretary
MRS. PAUL GREENE Sponsor



E A S T T E N N E S S E E C L U B

HUGH SMITH Chairman
JULIA MATTOCK Secretary
PROFESSOR K. W. PHILLIPS Sponsor



F L O R I D A C L U B

DENNY HAGE Chairman
RACHEL LANIER Secretary
MR. V. NEIL RICHARDSON Sponsor

GEORGIA CLUB

RAY COWAN Chairman
DORIA DRAKE Secretary
DR. LEWIS PENNINGTON Sponsor



KENTUCKY CLUB

WILLIAM RODDY Chairman
SYLVIA THRASHER Secretary
MRS. A. B. MACKEY Sponsor



MISSISSIPPI CLUB

ROBERT RUSSUM Chairman
PAT MERCER Secretary
MRS. M. E. REDFORD Sponsor



NORTH CAROLINA CLUB

EDITH MINGLEDORFF Chairman
JAMES VAN HOOK Secretary
DR. FRANKLYN WISE Sponsor





SOUTH CAROLINA CLUB

BOB MITCHELL Chairman
 JOYCE WOODARD Secretary
 PROFESSOR HAROLD HAMMOND . . . Sponsor



TENNESSEE CLUB

GERALD SPEAR Chairman
 RUBY SPEAR Secretary
 PROFESSOR LEON CHAMBERS Sponsor



VIRGINIA CLUB

JOE MOSES Chairman
 PEGGY CARSON Secretary
 MRS. K. W. PHILLIPS Sponsor



WEST VIRGINIA CLUB

BOB COOK Chairman
 CAROL LIGHT Secretary
 REV. C. E. KEYS Sponsor

WHO'S WHO AMONG
STUDENTS
IN AMERICAN UNIVERSITIES
AND COLLEGES

W H O ' S W H O



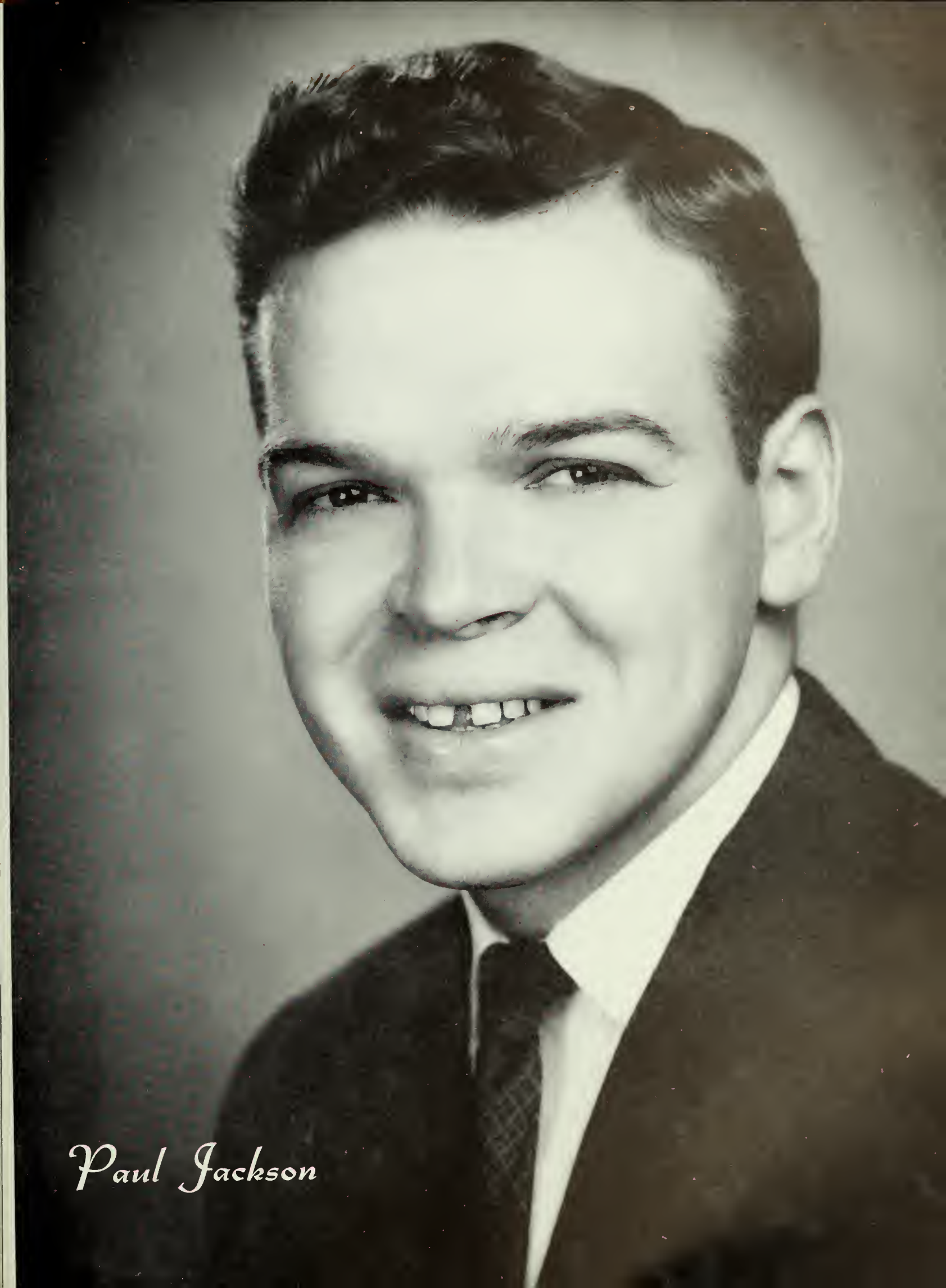
Kemp Higginbotham



Helen Burch



Winston Hatcliff



Paul Jackson



Gene Reynolds

HONOR SOCIETY

Trevecca's Honor Society is an organization exclusively for the "Brains." Membership is based upon a yearly average of 2.5. Outstanding seniors of the group are elected to life membership in the Zeta Chapter of the National Nazarene Honor Society of Phi Delta Lambda.



Left to right: Judy Magnusson, Miss Person, Phyllis Lobb, LaNelle Cowan

OFFICERS

- PHYLLIS LOBB President
- JUDY MAGNUSSON Vice-President
- LaNELLE COWAN Secretary-Treasurer
- MISS AMY L. PERSON Sponsor

First Row: Joe Adkisson, Ann Bohannon, Ann Clayton, LaNelle Cowan, Frances Howick. Second Row: Louise Irwin, Eleanor Knotts, Phyllis Lobb, Judy Magnusson, Lillian Pickett.





Spirit of Reverence...

- RELIGION

- FINE ARTS



Chapel Time—the brightest hour of a TNC Day!
These times of refreshing are an aid in helping us
mold, make and pattern our lives after Christ.

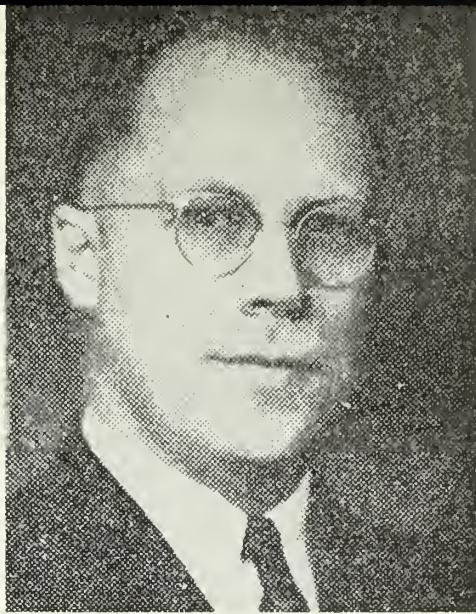
The goal of the chapel services is to implant in the
minds of all who listen a knowledge of our Lord and
Saviour, Jesus Christ, and to help us make of "the
lumber of our life not a tavern but a temple; not a
reproach but a song . . ."

CHAPEL TIME





DR. L. T. WELLS
Evangelist, Fall Revival



REV. IRA TRUE
Lecturer, Benson Lecture Series



MR. PAUL E. WELLS
Lecturer, Student Council Lectures



DR. HUGH BENNER



DR. MENDELL TAYLOR



MR. BILL CARLE



DR. L. T. CORLETT
R. T. Williams Memorial Lectures

MR. EARL WOLFE



A Missionary speaks



DR. MACK ANDERSON





CHRISTIAN WORKERS ASSOCIATION

OFFICERS

WINSTON HATCLIFF President
 JAMES STALEY Vice-President
 MARY JANE STILL Secretary
 EDDIE WEST Treasurer
 MARTHA GRAY Reporter
 IDA VAUGHN Follow-up Secretary
 LEROY DAVIS Visitation Secretary
 PROFESSOR K. W. PHILLIPS Sponsor

First Row: Mary Jane Still, Martha Gray, Winston Hatcliff, Ida Vaughn. Second Row: Professor K. W. Phillips, Eddie West, James Staley, LeRoy Davis.



All are invited to become effective witnesses and workers for Christ by taking an active part in the Christian Workers Associations.

The purpose of the association is "to promote the Kingdom of God wherever opportunity is presented"—in the jails, juvenile detention homes, or on the street corners. Many who would not be reached by regular church facilities have the opportunity to learn of Christ and, indeed, to come to Christ. This also affords valuable training for those who are preparing for Christian service either in full-time capacity or as laymen. Christ has given Christians a great challenge—"Ye shall be witnesses unto me both in Jerusalem, and in all Judea, and in Samaria, and unto the uttermost parts of the earth"—and the Christian Workers Association is helping to carry this work forward!

MINISTERIAL ASSOCIATION



The Ministerial Association, composed of all those who are preparing for full-time Christian service, is a very important factor in the spiritual life of our campus. The association sponsors the student speakers in chapel, the annual Thanks-

giving offering, and the daily noon-day prayer meeting. These activities have been a blessing and have rendered the association invaluable in maintaining the high spiritual level on our campus this past year.

HAROLD DERRYBERRY President
 CHARLES MELTON Vice-President
 JOYCE HUGHES Secretary

ROBERT TURNER Treasurer
 BOB MITCHELL Reporter
 PROFESSOR LEON CHAMBERS Sponsor

The Missionary Prayer Band is dedicated to the cause of missions and to the task of enlightening the students to the need of praying, fasting, and giving. Activities include offerings for various missionary needs, box-work, and special

meetings for those who have felt God's definite call to the mission field. The band meets each Friday noon to fast and pray, realizing the importance of the Master's words, "This kind can come forth by nothing, but by prayer and fasting."

THOMAS REID President
 MARTHA GRAY Secretary-Treasurer

MISS MARIE PEERY Sponsor



MISSIONARY PRAYER BAND



TREBLE TONE CHORUS

Front row, left to right: Pat Mercer, Sandy Nedrow, Beverly Musgrave, Brenda Reynolds, Martha Godby, Pat Taylor, Miss Barbara McClain, director. Second row: Sharon Norrick, Uldine Stewart, Carol Light, Lois Kolar, Miriam Hudgins, Joy Nell Warhurst, Iris Jones. Third row: Bobbye McCleskey, Judy Parrish, Janice Hay, Peggy Carson, Sue Ryland, Betty Lou Taylor, Sylvia Thrasher, Hilda Kea. Fourth row: Ann Fleming, Norma Cornelius, Phyllis Warren, Micky McMeans, Joyce Rudd, Ida Vaughn, Marita Slifer.

The Treble Tone Chorus under the direction of Miss Barbara McClain is the ladies' glee club which was organized two years ago. Their performance has been excellent. The accompanist is Miss Sylvia Thrasher.

The Male Chorus, or "Trevadores," is another new musical group organized two years ago. Professor Ramon Unruh is the director. The men sing in biweekly practice sessions and have had several public appearances. The accompanist is Mr. Ed Allred.



First row: Professor Unruh, director. Second row, left to right: Don Elder, Jimmy Staggs. Third row: Curtiss Pearson, Larry Altman, Bill Elkins. Fourth row: Elridge Eads, Gene Leviner, Leslie Farthing, Eugene Fadeley.

MALE CHORUS



Front row, left to right: Linda Taylor, Ann Bohannon, Betty Helms, Lois Conkey, Jean Partin, Linda Pierce, Karen Cox, Phyllis Lobb, Bess Pearson, Miriam Goodwin. Second row: Mary Beth Richardson, Peggy Jo Neal, Sue Hayes, Frances Howick, Sylvia Young, Carolyn Wiley, Edith Mingledorff, Nancy Rushing, Berma DuBose, Helen Burch. Third row: Denny Hage, Wayne Clancy, Everett Higginbotham, Edwin LeJeune, Douglas Askew, Dale Melton, Wendell Poole, Paul Jackson, Herman Rouse. Fourth row: James Van Hook, Ed Allred, Don Pitzer, Melvin Welch, Gene Cook, Raymond Cowan, Wade Westbrook, Orval LeJeune, Don Eads.

A CAPPELLA CHOIR

PROFESSOR RAMON UNRUH
Director



Socials, daily practices, plenty of lung exercises, and perseverance mark the gradual day-by-day progress of the A Cappella Choir.

Besides making various public appearances throughout the year, the choir made a two-week tour on the Southeastern Educational Zone. The choir plans also to go to Kansas City for the General Assembly this summer.

The desire of every choir member is that our Christ might be honored and praised.

SUMMER TRAVEL GROUPS

Thousands of Nazarene young people over the Southeastern Educational Zone first come into contact with our college through the traveling groups sent out under the direction of the field representative, Rev. C. E. Keys.



Left to right: Marquita Thomas, Nancy Rushing, Miriam Goodwin



Left to right: Linda Taylor, Mary Beth Richardson, Lois Conkey

Left to right: Denny Hage, Dale Melton, Gene Cook, Douglas Askew.





PROFESSOR RAMON UNRUH
Faculty Recitalist



PAUL JACKSON
Senior Speech Recital

RECITALISTS



SYLVIA YOUNG
Junior Piano Recital



BESS PEARSON
Junior Speech Recital

JOYCE HUGHES
Senior Speech Recital



PAUL CLECKNER
Junior Speech Recital





The street scene in Damascus



David, the Jewish captive, is tormented by the Arabs.

CHRISTMAS PLAY



The three wisemen stop in the desert and talk with Omar.

The adoration of the wise men at the manger.



“THE LOST STAR”

CLASS PLAYS



Freshman Class presented skit entitled "The Dear Departed"



Scene from Junior Class play entitled "The Lost Church"

Senior Class presented "A Ghostly Evening"



Ann Clayton and Charles Melton are afraid of ghost





Spirit of Friendliness...

- SPORTS
- DORMITORY AND CAMPUS LIFE





T.A.A. officers are, left to right: Mary Jane Still, Joyce Woodard, Wendell Poole, Jeanie Ledford.

TREVECCA ATHLETIC ASSOCIATION

OFFICERS

- | | |
|-----------------|-----------|
| WENDELL POOLE | President |
| JOYCE WOODARD | Secretary |
| MARY JANE STILL | Treasurer |
| JEAN LEDFORD | Reporter |

Wendell Poole is the able president of the Trevecca Athletic Association. With the help of Joyce Woodard, secretary, Mary Jane Still, treasurer, and Jean Ledford, reporter, he gets the job done. The co-sponsors, Dr. Homer J. Adams and Miss Barbara McClain, make the problems seem smoother as they with the four officers advise to the best of their ability.

The T.A.A. is a well-organized society with fun and play for all. Football, basketball, and softball are the three sports which cause the most enthusiasm, but there is much excitement also at a good ping pong, volleyball or shuffleboard game.

With the beginning of a new school year comes the organization of athletic societies. There are three societies—Alpha, Beta, and Delta.

Throughout the year students look forward to the different sports, and to the winning societies in each game.



ATHLETIC SOCIETIES

ALPHA

The Alphas elected Bob Cook as society chairman. Football season opened with special enthusiasm as they began the fight to maintain their victory of last year. They were rewarded for their efforts by the championship game which captured the title for them again.

Basketball season began this year at the Salvation Army Community Center in North Nashville. Alpha expectations ran high with each new victory and with the approach of championship games.

With spring came the Alphas' hope of being able to add softball victories to their records.



BETA

With the idea in mind of giving the Alphas and Deltas a rough struggle this year, the Beta Society chose Gene Cook as society chairman. The football season has been one of the best this year. The Beta boys were the first to give the Delta boys a defeat.

The Betas played top-notch basketball and looked forward to a chance to prove themselves in softball.



DELTA

Charles Kirby was elected society chairman of the Deltas. With the beginning of football in the fall they were out to take first place. By the end of the season the Deltas had deadlocked the Alphas in a first-place tie.

Deltas gave the Alpha team good competition in basketball and looked to the tournament plays as a fighting chance for basketball champs.

As prevailing softball champions of last year, the Delta boys viewed softball season with the determination of holding their position.



F O O T B A L L A L L - S T A R S

WADE WESTBROOK



RONALD KENNEDY



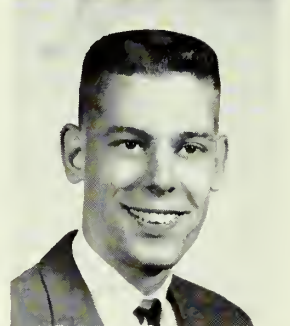
GLENN WOODS



BOB COOK



ELDON WARD



CHARLES KIRBY

We played hard



After him, boys



FOOTBALL

There's the kickoff, and the football season has officially started on T.N.C. campus. Enthusiasm was good as each society tried to cheer the loudest for its team. The Alphas found out that competition was going to be rough as the Deltas had a newcomer from E.N.C.—Glenn Woods. Gerald Woods was in there with the Beta team fighting hard. Each team member worked hard and it was good to see that there was victory for all this season—the Betas defeating the Deltas, and the Deltas defeating the Alphas. Al Wood with the Alpha team did a good job of coming out victorious even though by a small margin.

STANDINGS

	W	L	T
Top: Alpha	3	1	2
Center: Beta	1	4	0
Bottom: Delta	2	2	2

TOP SIX IN SCORING

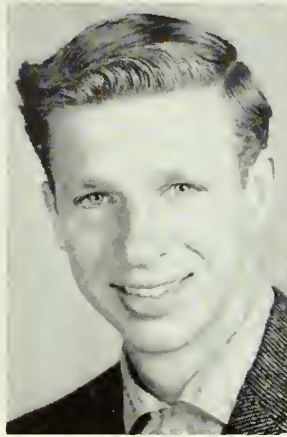
- Glenn Woods Delta
- Al Wood Alpha
- Wendell Poole Alpha
- Gerald Woods Beta
- Bob Cook Alpha
- Charles Kirby Delta



B A S K E T B A L L



ED SISSON



GLENN WOODS

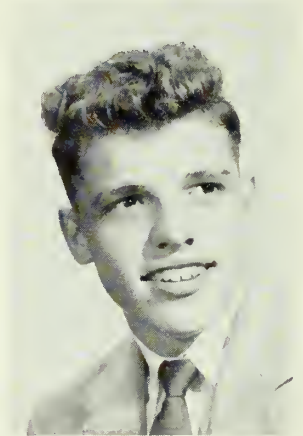


DAVID WARD



BOB COOK

A L L - S T A R S



ROGER COSTA

A Basket for Woods



BOYS BASKETBALL

"Who will defeat the Alphas this year?" This was the main question as the basketball season started. Competition was stiff and the Deltas and Betas both determined to be the successors. Eddie Sisson did a good job of keeping the scores up for the Alphas, but Paul Jackson was working hard for the Deltas and the Betas had the help of Duane Houston. There were tense moments at the end of some of the games as it seemed that one of these societies would defeat the undefeated Alphas, but at the end of the season the Alphas could boast once again of being "champs."

TOP SIX SCORERS

Ed Sisson	Alpha	224
Joe Carr	Beta	165
Glenn Woods	Delta	144
Dave Ward	Delta	136
Roger Costa	Beta	133
Dave Brown	Alpha	100

	Won	Lost
Alpha	6	0
Delta	3	3
Beta	0	6

TOURNAMENTS

- Delta over Beta—first round
- Alpha over Delta—championship



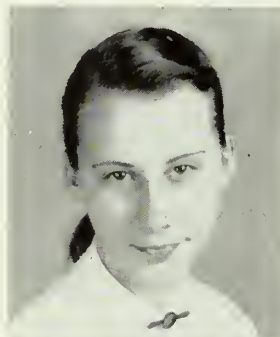
Top: Alpha
Center: Beta
Bottom: Delta

G I R L S B A S K E T B A L L

DORIS SWEENEY



ESTHER BLUME



SHARON NORRICK



LOUISE IRWIN



CAROL LIGHT



MARY JANE STILL

A L L - S T A R S

Carolyn guards the ball



GIRLS BASKETBALL

Amid cheers and laughter, girls basketball was off to an exciting start as the Alphas challenged the Betas in the first game of the season.

Alpha girls got "on the ball" and were undefeated in the regular games of the season. Carol Light did some superb shooting, making the undefeated record possible.

Beta and Delta girls were not to be left completely out of the picture. The excellent shooting of Doris Sweeney and Mary Jane Still gave keen competition, making the games exciting and keeping all the players "on their toes."

The Deltas proved themselves during the tournament games, defeating both the Alphas and the Betas, and coming out as "champs" at the end of the season.

TEAM RECORDS

	Won	Lost
Alpha	6	0
Delta	2	4
Beta	1	5

TOURNAMENT

	Won	Lost
Delta	2	0
Alpha	0	1
Beta	0	1

TOP SCORERS

Carol Light	89
Mary Jane Still	86
Joyce Shaw	35
Peggy Carson	25
Doris Sweeney	25
Esther Blume	19

Top: Alpha
Center: Beta
Bottom: Delta





S O F T B A L L

With spring in the air and everyone ready for a good time, the softball season started. School spirit was high as many appeared at the games, each cheering his side on to victory.

Which team was the best was a hard decision for anyone to make, for each team was well-organized and really "on the ball." You could tell they were, for some hard battles were staged during this season.

The Alphas had Hugh Smith to thank for watching over second base and giving many inspiring words to his teammates. Lowell Clyburn did a good job of hitting homeruns for the Betas. The Deltas were very proud of Byron Dollar's pitching.

The season was very successful and the Deltas could brag of being "champs."

Top: Alpha
Center: Beta
Bottom: Delta



What's the score?



We call the games

A L L - S P O R T S



Wonder what the play is



Spectators???

Sweeney tries for two



Who's got the ball?



RESIDENCE HALLS COUNCIL

The dormitory counselors have two functions. First, they become counselors to freshmen or other students who would like to discuss their problems with someone on their own level. Second, the members of the group serve as liaison between the students and the dean of students in matters concerning campus life.

The council is responsible for the Saturday evening programs.

In September the counselors are appointed. They meet monthly and discuss problems and projects. Professor Leon Chambers is the sponsor.



Representing Tidwell Hall are, left to right: Leroy Davis, Mr. Walter White, Winston Hatcliff, Kemp Higgenbotham, Wendel Poole.

Representing McKay Hall are, left to right: Martha Gray, Miss Thelma Bruckner, Sylvia Young, Jeanette Willis.



Representing Hardy Hall are, left to right: Anita Hamilton, Betty Dent, Judy Magnusson, Rosalie Gardner. Seated: Miss Marie Perry.

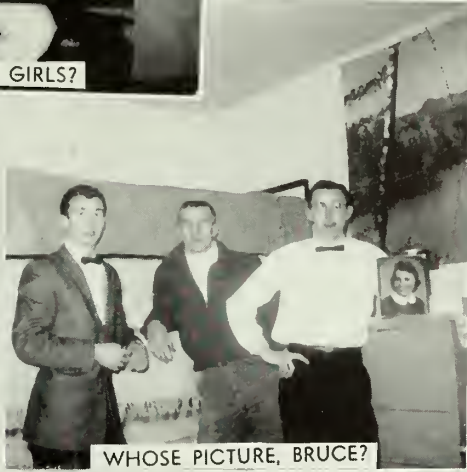




WHO NEEDS GIRLS?



OH, BOY, TOAST



WHOSE PICTURE, BRUCE?



ONE FOR THE STUDIES



MAY I BORROW YOUR HOTPLATE?



WHAT FUN



WHOLE HEART



SOPHISTICATED

T
I
D
W
E
L
L

H
A
L
L



WHAT'S WRONG NOW!



CAUGHT IN THE ACT



SOMETHING FUNNY



M-M-GOOD



POSING

McKAY



THREE TACKIES

HALL



LOOKING PRETTY



GIRLS, THEY AREN'T REAL



NOW, YA'LL



YOU'LL BURN IT



MOUSE KILLER



BIG DATE?



GOSSIP!!



WHAT IT IS?

HARDY



MOTHERLY COUNSELING

HALL



QUIET TIME



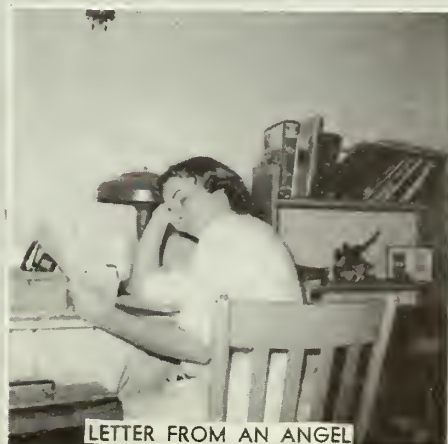
ON WITH THE WEDDING



NOW, BRENDA



EATS FOR THE SWEETS



LETTER FROM AN ANGEL



ME AND MY ELEPHANT

GIBBS



TRYING TO MAKE AN IMPRESSION



FUNNY FACES

HALL



MIDNIGHT SNACK



WHO'S SICK?

SMITH



WHAT HAS COME OVER YOU?



RELAX, NO ONE IS WATCHING



GOOD TO THE LAST DROP



PLEASE! CHLOE, PUT ON YOUR SHOES

HALL



I'M BABYSITTING WHILE MOTHER IS GONE



PERSONALLY, I BELIEVE IN TAKING LIFE EASY



I'VE JUST BEEN APPOINTED DIPLOMAT TO DENMARK

GUESS



AREN'T WE PRETTY!



AND WHAT'S WRONG NOW!

WHO



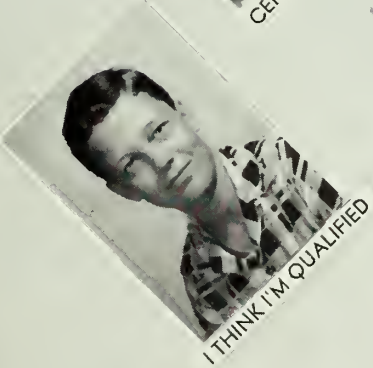
WHAT YOU SAY, CAT?



CERTAINLY, SIR!



I'M JUST A POOR LITTLE GIRL, MISTER



I THINK I'M QUALIFIED



I'M PRETTY LITTLE GIRL



I'M SWEET



HURRY UP IN THERE



YOU LIKE ME!



WHERE'S POP KEYS?



COKE FOR TWO



LET'S MAKE IT SHONEY'S



THE WAY TO A MAN'S HEART



SWEETHEARTS' DELIGHT

CUPID'S



CAPTIVES



OPEN HOUSE AT TIDWELL



SWEETHEARTS'



SWEET TALKS



SHORT TALK, 10:35



JUST MARRIED



ALWAYS



HAPPY FAMILY



I LOVE YOU TRULY



MR.

AND

MRS.



NEWLY-WEDS



DEVOTED



OFF FOR THE HONEYMOON



WINTER AT

T.
N.
C.





THANKSGIVING BANQUET



TWIRP WEEK



CHRISTMAS PARTY



HALLOWEEN PARTY



VALENTINE BANQUET



TACKY PARTY

CLASS

ACTIVITIES



CAKE CODE



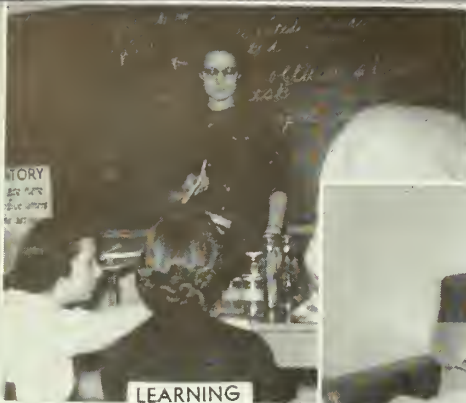
HEALTH WEEK



FRESHMAN SOPHOMORE BANQUET



ORIENTATION WEEK



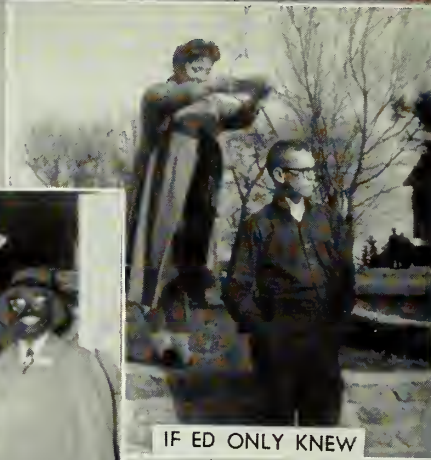
LEARNING



TEST TOMORROW



WHERE ARE THEY FROM



IF ED ONLY KNEW

Our Activities



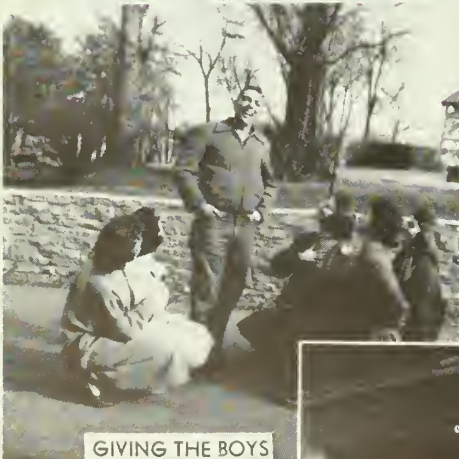
OOOOPS



THOUGHT I WOULD (DROP A BOOK)



WHAT SANTA LEFT



GIVING THE BOYS OUR ATTENTION



BACKWOOD BROTHERS



DOUBLE DATING



EATING



SNACKING BETWEEN





Learning



Reverence

We believe in the

Trevecca Spirit

We honor it . . .

We love it . . .

May it never die



Cooperation



Friendliness

STUDENT INDEX

ACHESON, Charles Trevecca Trailer Court, Nashville, Tenn.
 ADAMS, Beverly Sue P.O. Box 313, Bamberg, S.C.
 ADAMS, Donnie R.R. 5, Paris, Ky.
 ADAMS, Janice P.O. Box 313, Bamberg, S.C.
 ADAMS, Nancy 1316 E. Main, Waverly, Tenn.
 ADKISSON, Joseph 82 Nance Lane, Nashville, Tenn.
 AGNER, Paul R.R. 2, Madison, Fla.
 ALLEN, Matthew Jimmy R.R. 1, Box 61, McComb, Miss.
 ALLISON, Carol 931 Currey Road, Nashville, Tenn.
 ALLISON, Lloyd 931 Currey Road, Nashville, Tenn.
 ALLRED, Edward 812 West Lee, Greensboro, N.C.
 ALTMAN, Larry 40 Clark St., Henderson, Ky.
 AMMEN, Langdon Kernersville, N.C.
 ANDREWS, Jerry 3127 Villa Rosa, Tampa 11, Fla.
 ARCHER, Danny 2520 25th St., Nitro, W.Va.
 ARENDER, Alice June R.R. 1, Box 86, Jackson, Miss.
 ARKLEY, Wanda 1723 Eldersville Road, Follansbee, W.Va.
 ASKEW, Douglas 2461 Beech Ave., Macon, Ga.

BABIONE, Malcolm Box 5811, Midwest City, Okla.
 BAKER, Janese R.R. 1, Box 32, Linville, Va.
 BAKER, Janice R.R. 2, Box 41, Lewisburg, W.Va.
 BAKER, Lucille R.R. 1, Box 32, Linville, Va.
 BARNES, Helen 4821 Torbay Dr., Nashville, Tenn.
 BARNHILL, Bobby Pocalla Springs, Sumter, S.C.
 BAUCOM, Dean 3219 Meade, Nashville, Tenn.
 BAUER, Bobby 353 Short St., Lawrenceburg, Ind.
 BAUER, Johnny 353 Short St., Lawrenceburg, Ind.
 BEARD, Lloydette Farmers Exchange, Tenn.
 BEASEY, Alena 4302 Hannah, Louisville, Ky.
 BEEL, Jeanette 1760 E. Decatur St., Decatur, Ill.
 BEELER, Sue Bussell Ferry Rd., Lenoir City, Tenn.
 BENDER, James Star Route, Monteagle, Tenn.
 BENSON, Ann 3524 Golt St., Nashville, Tenn.
 BEYER, Charles Box 45, Large Branch, Clanton, Pa.
 BIGGS, Randall 660 Franklin Ave., Lewisburg, Tenn.
 BLACKMON, Edna Ruth 521 Lemont Dr., Nashville, Tenn.
 BLANKENSHIP, Donald Sumter, S.C.
 BLUME, Esther Box 24, Cory, Ind.
 BLYTHE, George 7745 N.W. 4th Ave., Miami, Fla.
 BOHANNON, Ann I E. Esther, Orlando, Fla.
 BOLIN, Myrtle P.O. Box 354, Brover, N.C.
 BOOHER, Rosena 12805 N.W. 17th Ave., Miami 68, Fla.
 BORDELON, Mariana 1455 Mazant St., New Orleans, La.
 BOWLES, Philip 3604 Rumbelbrown Dr., Charleston, W.Va.
 BRACKEN, Barrie R.R. 2, Box 30, St. Augustine, Fla.
 BRANNEN, John Star Route, West Louisville, Ky.
 BRATTON, Linda 308 1/2 Elm St., Russell, Ky.
 BRIGHT, Grace 403 S. 22nd St., New Castle, Ind.
 BRIGHT, Ruth 403 S. 22nd St., New Castle, Ind.
 BRIM, Robert 1720 E. 8th St., Jeffersonville, Ind.
 BROWN, Carol R.R. 1, Kittanning, Pa.
 BROWN, David R.R. 1, Kittanning, Pa.
 BROWN, Joan R.R. 1, Kittanning, Pa.
 BROWN, Robert Lee R.R. 3, Graleville, Fla.
 BRUCKNER, Virginia Magnolia, Miss.
 BRUMBELOE, Marlene 4305 Alabama Ave., Tuscaloosa, Ala.
 BRYAN, John B. Trailer Court, Nashville, Tenn.
 BRYANT, Wesley 68 Lester Ave., Nashville, Tenn.
 BULA, Shirley R.R. 5, Box 364, Vicksburg, Miss.
 BURCH, Helen 401 Masonic Lane, Richmond, Va.
 BURNETTE, Esther 2717 1/2 Flint St., Bristol, Tenn.
 BUTLER, David 500 Fesslers La., Lot E-7, Nashville, Tenn.
 BUTLER, Nancy 110 N.W. 7th Ave., Ft. Lauderdale, Fla.
 BUTLER, Walter R.R. 1, Box 347, Homestead, Fla.

CAIN, Darlene Big Clifty, Ky.
 CAIN, Delbert Clarkson, Ky.
 CAIN, Sue Clarkson, Ky.
 CALDWELL, Odell 60 Nance Lane, Nashville, Tenn.
 CAMPBELL, Eugene 75 Lester Ave., Nashville, Tenn.
 CARR, Joe Robert 2502 Indianola Ave., Columbus, Ohio
 CARROLL, Jacqueline R.R. 1, Trenton, Ga.
 CARSON, Margaret 219 Monroe St., Falls Church, Va.
 CARSON, Ray 1309 Dermit Rd., Nashville, Tenn.
 CASSEDAY, Lynn 235 Shattowford Rd., Chattanooga, Tenn.
 CASTO, Nancy 116 W. Renolds Ave., Belle, W.Va.
 CHASON, Robert Bambridge, Ga.
 CLACK, Kenneth 2573 Coral Way, Daytona Beach, Fla.

CLANCY, Wayne 221 7 Perth Ct., Louisville, Ky.
 CLARK, Jerry D. R.R. 2, Box 294, Charleston, W.Va.
 CLAYTON, Ann 718 Todd St., Shawmut, Ala.
 CLAYTON, John 676 E. High St., Waynesburg, Pa.
 CLECKNER, Paul 901 McClurkin, Nashville, Tenn.
 CLYBURN, Lowell Gen. Del., Kissimmee, Fla.
 COLLINS, Carolyn Pineville, W.Va.
 COLLINS, Robert P.O. Box 155, Twin Branch, W.Va.
 COMBS, Chloe 108 Everett St., Chattanooga, Tenn.
 COMBS, Mary 108 Summers St., Beckley, W.Va.
 COMFORT, Sidney 1111 Noble St., Jackson, Miss.
 CONKEY, Lois 3274 Taylor Rd., Barberton, Ohio
 CONLEY, Myrl R.R. 2, Mud Lick, Ky.
 COOK, Bob 119 25th, Huntington, W.Va.
 COOK, Carol 114 N. Osceola, Arcadia, Fla.
 COOK, Donna 105 Union Rd., St. Louis 23, Mo.
 COOK, Duane 9822 63rd Dr., Forest Hills, N.Y.
 COOK, Gene 2603 Greenup St., Covington, Ky.
 COPEN, Marshall 129 East A Dr., Charleston, W.Va.
 COPLEY, Nancy Inez, Ky.
 CORNELIUS, Norma 2633 N.E. 6th Ave., Ft. Lauderdale, Fla.
 COSTA, Roger 517 Lester Ave., Nashville, Tenn.
 COTTRELL, Frances 501 Lester Ave., Nashville, Tenn.
 COWAN, La Nelle 85 Lester Ave., Nashville, Tenn.
 COWAN, Raymond 85 Lester Ave., Nashville, Tenn.
 COX, Karen Box 259, Legg Rt., Sissonville, W.Va.
 COX, Sandra 1743 Rembert Ave., Macon, Ga.
 CRAIG, James 204 Garwood Dr., Nashville, Tenn.
 CREW, Paul 2725 River Ave., Camden 5, N.J.
 CRITES, Evangeline 648 Wilshire Dr., Concord, N.C.
 CRUVER, Clifford 511 Lester Ave., Nashville, Tenn.
 CULPEPPER, Sarah Box 66, Hart St., Nashville, Tenn.
 CUMMINGS, Orville 2364 Pa., Charleston, W.Va.

DALTON, Gene Private Dr., Trevecca Campus
 DAUGHERTY, Shirley 2815 Dixie Ave., Savannah, Ga.
 DAVIS, David 501 Lester Ave., Nashville, Tenn.
 DAVIS, Donna R.R. 1, Box 343, Homestead, Fla.
 DAVIS, Jordan 600 N. Lee St., Valdosta, Ga.
 DAVIS, Leroy 1601 Broadway, Goodland, Kan.
 DAVIS, Robert 2173 Carson St., Nashville, Tenn.
 DAVIS, Shirley 1601 Broadway, Goodland, Kan.
 DAVIS, William C. 501 Lester Ave., Nashville, Tenn.
 DeBOER, John R. 164 West 17th St., Holland, Mich.
 DEEL, Laverne Wainville, W.Va.
 DENNIS, Carl 312 Veritas St., Nashville, Tenn.
 DENNIS, Carolyn 149 S. Elm St., Hagerstown, Ind.
 DENNIS, Darrell 85 Nance Lane, Nashville, Tenn.
 DENNIS, Garnald 149 S. Elm St., Hagerstown, Ind.
 DENT, Bettyle R.R. 3, Whitwell, Tenn.
 DERRYBERRY, Harold 1211 Kermit Dr., Nashville, Tenn.
 DILLEY, Geraldine 105 Judge St., Marlinton, W.Va.
 DISHON, Ralph 65 Woodford Ave., Owensboro, Ky.
 DIXON, Robert R.R. 1, Aashland, Ky.
 DOLLAR, Byron 107 Alexander Rd., Fairfax, Ala.
 DONEGAN, Beverly R.R. 1, Tennessee City, Tenn.
 DOOLITTLE, Ronald 1219 Egleston Ave., Kalamazoo, Mich.
 DOWNING, Dorothy R.R. 4, Box 218, Fitzgerald, Ga.
 DRAKE, Doris 50 S. Henderson Ave., Donaldsonville, Ga.
 DuBOSE, Berma 403 S. Main St., Fitzgerald, Ga.
 DuBOSE, Juanita 403 S. Main St., Fitzgerald, Ga.
 DURLAND, Archie 492 Lindbergh Ave., Charleston, S.C.

EADS, Donald 93 Lester Ave., Nashville, Tenn.
 EADS, Eldridge 93 Lester Ave., Nashville, Tenn.
 EADY, Kenneth 511 Laird Circle, Brookhaven, Miss.
 ELDER, Donald 1320 Durrett, Louisville, Ky.
 ELKINS, James Heaberlin Rd., Wurtland, Ky.
 ELKINS, Mary Katherine 4228 Curt's Ave., Louisville, Ky.
 ELKINS, Bill Heaberlin Rd., Wurtland, Ky.
 EVANS, Mary Elaine 735 Wildview Dr., Nashville, Tenn.
 EVANS, Maurice Ervin 735 Wildview Dr., Nashville, Tenn.

FADELEY, Eugene 3605 West St., Weirton, W.Va.
 FARISH, John William 9 Sycamore Ave., Somerdale, N.J.
 FARMER, Ernest Virgil 157 1st Ave. South, Nitro, W.Va.
 FARTHING, Leslie Box 213, Cabin Creek, W.Va.
 FICHTNER, Betty 509 Lester Ave., Nashville, Tenn.

STUDENT INDEX

- FICHTNER, Edwin 509 Lester Ave., Nashville, Tenn.
 FIGGE, Eugene 1138 Bryden Rd., Columbus, Ohio
 FISHER, Walter 230 N.W. 4th Ave., Homestead, Fla.
 FLEMING, Ann P.O. Box 34, Dolomite, Ala.
 FLY, William 3804 Nebraska Ave., Nashville, Tenn.
 FOSKEY, Marilyn R.R. 6, Box 95, Dublin, Ga.
 FOWLER, Thomas 3906 9th Ave., Parkersburg, W.Va.
 FRAME, Eugene R.R. 1, Williamsburg, Ind.
 FRAZIER, Oren 511 Lester Ave., Nashville, Tenn.
 FREY, Jane R.R. 1, Lickton Pike, Whites Creek, Tenn.
 FREY, Ruth R.R. 1, Lickton Pike, Whites Creek, Tenn.
 FROST, Jack 3233 N.W. 101st St., Miami, Fla.
 FRY, Geraldine 4103 E. Commanche Ave., Tampa 10, Fla.
 FRYE, Earl 9017 Ohio Ave., Marmet, W. Va.
 FURNISS, Harold 307 Monroe Ave., Clarksdale, Miss.
 FURNISS, Robert 336 Woodycrest Ave., Nashville, Tenn.
- GALLOWAY, Bill 74 Nance Lane, Nashville, Tenn.
 GALLOWAY, Patricia 4215 David Ave., Louisville 16, Ky.
 GARBER, John 727 Race St., Waynesburg, Pa.
 GARDNER, Rosalie 207 1st Ave., Glasgow, W.Va.
 GARNER, Emory P.O. Box 114, Grion, Ga.
 GATES, Ernest Trevecca Campus, Nashville, Tenn.
 GEISE, Juanita Box 41, Bentonville, Ind.
 GIBBS, William 606 Benton W.S., Nashville 4, Tenn.
 GIBSON, Wayne 313 Wimpole Dr., Nashville, Tenn.
 GIBSON, Judy 1276 Clay St., Bowling Green, Ky.
 GILLIAN, Franklin 814 Cauthen St., Rock Hill, S.C.
 GODBY, Martha 2341 Dorma Ave., Louisville, Ky.
 GODBY, Paul 75 Lester Ave., Nashville, Tenn.
 GOINS, Shannon Lou 97 Aspen Ave., Frankfort, Ky.
 GOODMAN, Barbara R.R. 1, Sewanee, Tenn.
 GOODWIN, Miriam 732 Covington St., Jackson, Ga.
 GOULD, Brenda 1342 W. State St., Columbus, Ohio
 GRAY, David 4000 Sunset Ave., Chattanooga 11, Tenn.
 GRAY, June Route 4, Shelbyville, Tenn.
 GRAY, Martha R.R. 1, Pavo, Ga.
 GRAY, Virginia 311 Patton Dr., Ashland, Ky.
 GREER, Barbara Box 266, Clinton, Miss.
 GUNTER, Theresa 15 Columbia Rd., Winnsboro, S.C.
- HADDIX, Bruce R.R. 1, Box 229, Elkins, W.Va.
 HADDIX, Terrill R.R. 1, Box 229, Elkins, W.Va.
 HADEN, Carolyn Sue 100 Holmes, Somerset, Ky.
 HAGE, Dennis 714 N.W. 33rd St., Ft. Lauderdale, Fla.
 HALL, Iris Darleen Santa Clair, Cuba
 HALL, Nannie Lee 93 Lester Ave., Nashville 10, Tenn.
 HALL, John Wesley, Jr. Santa Clair, Cuba
 HALL, Orville, Jr. 93 Lester Ave., Nashville 10, Tenn.
 HALL, Patricia A. Santa Clair, Cuba
 HALL, Patricia Ann 113 Brook Dr., Dickson, Tenn.
 HALL, Patricia I. Santa Clair, Cuba
 HAMILTON, Anita 311 W. 7th St., New Albany, Ind.
 HAMRICK, Kenneth 856 Mission Rd., Charleston, W.Va.
 HARMON, Jane R.R. 1, Box 87, Adger, Ala.
 HARNER, Lea 11310 Procts Court, Cleveland, Ohio
 HARRIS, Stanley 293 Browning Rd., Nashville 11, Tenn.
 HASSINGER, Raymond Trevecca Trailer Court, Nashville, Tenn.
 HATCLIFF, Winston Cherokee, N.C.
 HATFIELD, Daniel 509 Donchester Ave., Middlesboro, Ky.
 HAUFNER, Nancy R.R. 3, Box 217, Gainesville, Fla.
 HAWKS, Frank 1113 Highland Park Dr., Lexington, Ky.
 HAY, Janice Albany, Ky.
 HAYES, Myra Sue R.R. 1, Box 32-A, Adamsville, Ala.
 HAYES, Patsy R.R. 2, Bruceville, Ind.
 HAYES, Richard Trevecca Trailer Court, Nashville, Tenn.
 HEATON, Kenneth Trevecca Trailer Court, Nashville, Tenn.
 HEDGEPTH, Richard 5812 Couch Dr., Nashville, Tenn.
 HEDGES, Ronald R.R. 2, Brooksville, Ky.
 HEINSS, Paul Allardt, Tenn.
 HELMS, Betty 2029 Harold Ct., Tallahassee, Fla.
 HEMMERLY, Kenneth 1435 McGavock Pike, Nashville, Tenn.
 HENDERSON, Donald 1116 W. Aldham, Knoxville, Tenn.
 HESS, James 408 Elm Ave. S.E., Roanoke, Va.
 HETRICK, Paul Boksburg, Transvaal, South Africa
 HIGGINBOTHAM, Everett 5029 Wingdale, Memphis, Tenn.
 HIGGINBOTHAM, Kemp 5029 Wingdale, Memphis, Tenn.
 HIGHLANDER, Brenda R.R. 2, Box 16, Alderson, W.Va.
 HINTON, Jack 93-A Carroll St., Nashville, Tenn.
- HOLDERBY, Bob 607 11th St. W., Huntington, W.Va.
 HOLT, Donna Box 92, Jamestown, Tenn.
 HOOD, Jo Ann 1307 Myrtle Ave., Sanford, Fla.
 HORTON, Irvin 80 Nance Lane, Nashville, Tenn.
 HOUSTON, Duane R.R. 1, Boone, Iowa
 HOWES, Tressa Cabin Creek, W.Va.
 HOWICK, Frances 1123 N. Alexander St., Charlotte, N.C.
 HUDGINS, Miriam 225 Sleepy Hollow Rd., Falls Church, Va.
 HUDSON, Kermit R.R. 2, Box 394-A, Charleston, W.Va.
 HUGHES, Harold 122 E. Bijou, Colorado Springs, Colo.
 HUGHES, Joyce 8180 Cadillac, Warren, Mich.
 HURLES, Vernon E. Elm Hill Tr. Pk., Nashville, Tenn.
 HUSSEY, Edith 1649 N.E. 30th Ct., Pompano Beach, Fla.
 HYDE, Alfred 8000 52nd Lane N., Pinellas Pk., Fla.
- IRWIN, Ed 72 Nance Lane, Nashville, Tenn.
 IRWIN, Kenneth 1885 Kingshighway, Clearwater, Fla.
 IRWIN, Louise 1885 Kingshighway, Clearwater, Fla.
- JACKSON, Paul R.R. 1, Clay City, Ind.
 JEFFCOATE, Marjorie 475 Hanging Moss Circle, Jackson, Miss.
 JENKINS, Betty 643 S. 7th St., Clarksburg, W.Va.
 JENKINS, Lawrence 408 Oak Heights Ave., Plant City, Fla.
 JOHNSON, Arnold 1007 W. Buryon St., High Point, N.C.
 JOHNSON, Yvonne 706 E. Oak St., Lakeland, Fla.
 JONES, Lillie 513 Lester Ave., Nashville, Tenn.
 JONES, Rudolph Armathwaite, Tenn.
 JONES, Deidre Piggs Peak, Swaziland, S. Africa
 JONES, Gary 513 Lester Ave., Nashville, Tenn.
 JONES, Iris R.R. 5, Box 424-A, Savannah, Ga.
 JONES, Lucille 811 Kirkwood Lane, Nashville 4, Tenn.
 JONES, Margaret 515 Lester Ave., Nashville, Tenn.
 JONES, Patsy Yvonne 76 Nance Lane, Nashville, Tenn.
 JONES, Ruby 28 Kennedy Homes, Ft. Lauderdale, Fla.
 JONES, Yvonne Piggs Peak, Swaziland, S. Africa
- KOLMES, Robert 9 Lower Ferry Rd., Trenton, N.J.
 KEA, Hilda S. High St., Waynesboro, Tenn.
 KEITH, Jennie W. Somerset, Somerset, Ky.
 KELLY, Alma 3rd St. Lane, Richmond, Ky.
 KELLY, Howard 3rd St. Lane, Richmond, Ky.
 KENNEDY, Carolyn 1123 36th Ave. N., St. Petersburg, Fla.
 KENNEDY, Ronald Quick, W.Va.
 KERR, Joseph R.R. 4, Box 558, Greensboro, N.C.
 KING, Eugene R.R. 5, Box 302, Savannah, Ga.
 KIRBY, Billy 511 Rube S., Maryville, Tenn.
 KIRBY, Charles 3348 Rosita Dr., Memphis, Tenn.
 KLAUSNER, William 69 Lyle Lane, Nashville, Tenn.
 KLINSTIVER, Charles, Jr. Trevecca College, Nashville, Tenn.
 KLINSTIVER, Charles, Sr. Trevecca College, Nashville, Tenn.
 KNOTT, Eleanor 1313 Portview Dr., Nashville, Tenn.
 KNOX, Charlene Dulaney St., Houston, Miss.
 KOCH, Gary Trevecca Tr. Ct., Nashville, Tenn.
 KOHSER, E. Ray 125 Deep Creek Blvd., Portsmouth, Va.
 KOLAR, Linda 64 Hart St., Nashville, Tenn.
 KOLAR, Lois 64 Hart St., Nashville, Tenn.
 KOLLIO, Anna 1009 Riverside Dr., Nashville, Tenn.
- LANCASTER, Robert 324 Persons St., Ft. Valley, Ga.
 LANE, Mary Helen 3100 Cronwell Dr., Lorain, Ohio
 LANIER, Rachel Box 216, Kenansville, Fla.
 LASLEY, James 1806 46th, Langdale, Ala.
 LAWRENCE, Riley 611 Wood St., Maysville, Ky.
 LAWSON, Franklin Box 234, McCrory, Ark.
 LAWSON, Mavis R.R. 2, McCrory, Ark.
 LEDFORD, Norma Jean 104 Woodlawn Dr., Chattanooga, Tenn.
 LEE, Paul 1316 N.W. 52nd St., Miami, Fla.
 LEEPER, Helen R.R. 2, Proctorville, Ohio
 LEEZER, Arthur M. 54-B University Ct., Nashville, Tenn.
 LEIGH, Nancy R.R. 4, Box 32-A, Greenwood, Ind.
 LeJEUNE, Edwin 1209 Pegram St., Charlotte, N.C.
 LeJEUNE, Orval 1209 Pegram St., Charlotte, N.C.
 LEVINER, Eugene 540 Beech Dr. Newport News, Va.
 LIGHT, Carol Box 128, Cabin Creek, W.Va.
 LIN, Archie Norris 1617 N. Dixie, Lake Worth, Fla.
 LITTLE, Dwayne 425 Highway, Ludlow, Ky.
 LITTON, Marilyn 50 Summit Ave., Hagerstown, Md.

STUDENT INDEX

LOBB, Phyllis R.R. 3, Box 113, Greensburg, Ky.
 LOYD, Evelyn R.R. 2, Box 110-F, Bartow, Fla.

McBRYANT, Pauline R.R. 3, Fitzgerald, Ga.
 McCAULEY, John R.R. 1, Box 226, Elkins, W.Va.
 McCLESKEY, Bobbys 1376 Crest Ave., Tarrant, Ala.
 McDONALD, Anne R.R. 5, Box 532, Charleston, W.Va.
 McDONALD, Ed 5313 Staunton Ave., Charleston, W.Va.
 McDONALD, Margaret 5313 Staunton Ave., Charleston, W.Va.
 McDOWELL, Faye 1318 Sweetbrier Ave., Nashville, Tenn.
 McDOWELL, Mildred 1318 Sweetbrier Ave., Nashville, Tenn.
 McFILLIN, Beverly P.O. Box 4163, Alexandria, La.
 McGILL, Mary Alice 516 W. Jessamine St., Fitzgerald, Ga.
 McGRANAHAN, Larry 606 E. Hendrix, Brazil, Ind.
 McKAY, Elizabeth Kodaikanal, S. India
 McMEANS, Margaret 588 E. Calla Rd., Poland, Ohio
 McWHORTER, Harold 42 Johns St., St. Augustine, Fla.
 MAGNUSSON, Judy Green Bay, Va.
 MANN, Walter C. Trevecca Trailer St., Nashville, Tenn.
 MARLIN, Sharron 635 Glenthorn Rd., Columbia, S.C.
 MASON, Earline Mawrertown, Va.
 MATLOCK, Charles R.R. 1, Lenior City, Tenn.
 MATLOCK, Julia R.R. 1, Lenior City, Tenn.
 MEDINA, Barbara 1407 Spring St., Parkersburg, W.Va.
 MEEKS, Herman A. 97-A University Ct., Nashville, Tenn.
 MEEKS, Jack 2968 S.W. 24th Terrace, Miami, Fla.
 MELTON, Charles 2221 Foster Ave., Nashville, Tenn.
 MELTON, Dale 425 W. Imogene St., Arcadia, Fla.
 MENESS, John, Jr. 411 Hall Circle, Gallatin, Tenn.
 MERCER, Patsy P.O. Box 82, Hattiesburg, Miss.
 MIDCAP, Allen R.R. 2, New Martinsville, W.Va.
 MIDDLETON, Travis 645 4th Ave. N., Lewisburg, Tenn.
 MILES, Ilene 2189 Hillview, Sarasota, Fla.
 MILEY, Judy 323 E. 12th St., Belle, W.Va.
 MINGLEDORFF, Edith 1906 Boulevard, Greensboro, N.C.
 MITCHELL, Bob 31-A Carroll, Nashville, Tenn.
 MITCHELL, Jeanette 21 S. Washington St., Sumter, S.C.
 MITCHELL, Ruby P.O. Box 372, Sebring, Fla.
 MOBLEY, Clayton 51 Paris Ave., Nashville, Tenn.
 MOBLEY, Donna 51 Paris Ave., Nashville, Tenn.
 MOBLEY, Judy 51 Paris Ave., Nashville, Tenn.
 MOORE, Carolyn 4807 Washington Ave., Charleston, W.Va.
 MOORE, John 2736 Marqan Dr., Dallas 16, Texas
 MORRISON, Mary Elizabeth 1478 Wolf Ridge Dr., Mobile, Ala.
 MORSE, Joseph W. 66 Hart St., Nashville, Tenn.
 MOSES, Joe 119 Broad St., Salem, Va.
 MUNSEY, Margie 200 Grand St., Lenoir City, Tenn.
 MUNSHOWER, Virginia Box 79, Josephine, Pa.
 MURRAY, Lorraine R.R. 3, Box 578, Jacksonville, Fla.
 MUSGRAVE, Beverly R.R. 1, Box 9, Willow Wood, Ohio
 MYERS, Robert Carmi, Ill.

NAILLE, William 113-B University Ct., Nashville, Tenn.
 NASH, Gloria 10160 114th Terrace, No. Largo, Fla.
 NEAL, Peggy Jo R.R. 4, Box 308, Rock Hill, S.C.
 NEDROW, Sandra 734 Monongalia Ave., Morgantown, W.Va.
 NELSON, Marielynn 1560 S. Murtle, Clearwater, Fla.
 NICHOLS, Carolyn 18803 Oakland Ave., Detroit 3, Mich.
 NICHOLS, William Box 602, Uniontown, Ala.
 NEILSON, Sherrill 35 Arden Rd., Montgomery 9, Ala.
 NIXON, William 708 E. Amate, Jackson, Miss.
 NOEL, Judie R.R. 1, Box 86, Spencer, Ind.
 NORRICK, Sharon 110 Trusler St., Oakland City, Ind.

PALMER, Joyce R.R. 3, Ithaca, Mich.
 PARRISH, Earl R.R. 1, Box 300, Brunswick, Ga.
 PARRISH, Judith R.R. 4, Box 367-E, Rock Hill, S.C.
 PARSONS, Annice 181 E. Stevens, Cookeville, Tenn.
 PARTIN, Jean 216 E. Monroe, Thomasville, Ga.
 PATRICK, Gail 1630 Winston St., Florence, Ala.
 PEARSON, Bess 501 Jameson, Houston, Miss.
 PEARSON, Curtiss S. 1416 Wells Ave., S.E., Huntsville, Ala.
 PENNINGTON, Rosemary 878 Kipling Dr., Nashville, Tenn.
 PERDUE, Eva Pineville, W.Va.
 PETERSON, Aldor Box 68, Almelund, Minn.
 PETTY, Carlyn 79A Glenrose, Nashville, Tenn.
 PHILLIPS, Jackson 1110 Sunnymead, Nashville, Tenn.
 PHILLIPS, Judith R.R. 4, Box 241-B, Gainesville, Fla.

PHIPPS, Samuel 431 1/2 W. 6th St., Huntington, W.Va.
 PICKETT, Arthur 2003 Hutton Dr., Nashville, Tenn.
 PICKETT, Lillian 2003 Hutton Dr., Nashville, Tenn.
 PIERCE, Linda 505 Columbia Ave., Danville, Ill.
 PITZER, Donald 716 Idlewild Dr., Madison, Tenn.
 POOLE, Wendell 3110 Idlewood Ave., Youngstown, Ohio
 POWELL, Marian 200 Penter Ave., Clanton, Ala.
 PRATT, Jackson 3120 Knobdale Rd., Nashville, Tenn.
 PRATT, Mary R.R. 1, Box 73, Victoria, Va.
 PREECE, Bertha Box 144, Inez, Ky.
 PRICE, Marie 500 Fessler Ave., D-9, Nashville, Tenn.
 PRICE, Nathan 500 Fessler Ave., D-9, Nashville, Tenn.
 PROBST, Audrey Mt. Solon, Va.
 PROVANCE, Esther Box 14, Follansbee, W.Va.
 PUGH, Cecil R.R. 1, Knightstown, Ind.
 PUTNAM, Bill 185 Jewett St., Lowell, Mass.
 PUTNAM, Glenda 933 Gilbert St., Atlanta, Ga.

QUICK, Mitchell R.R. 4, Box 214, Bennettsville, S.C.

RAGSDALE, James D. 4506 Nevada Dr., Nashville, Tenn.
 RAGSDALE, Roy R.R. 10, Cullman, Ala.
 RALPH, Barbara 513 Lester Ave., Nashville, Tenn.
 RANEY, Wendell 1332 Main, Vincennes, Ind.
 REID, Thomas Clearbrook, Va.
 REYNOLDS, Brenda 3021 Ave. 1, Birmingham, Ala.
 REYNOLDS, Gene 4400 Windemere Rd., Columbia, S.C.
 RHODES, Carlene Yvonne Riverview Dr., Clarksville, Tenn.
 RHODES, Cecil St. Maryville, Tenn.
 RHODES, Edith 723 PFLance St., Maryville, Tenn.
 RHODES, William 315 Frayser Ave., Owensboro, Ky.
 RICE, John 319 Valeria, Nashville, Tenn.
 RICHARDSON, Carol 78 Nance Lane, Nashville, Tenn.
 RICHARDSON, Mary Beth 78 Nance Lane, Nashville, Tenn.
 RICHARDSON, Victor 78 Nance Lane, Nashville, Tenn.
 RIDDLE, Beulah Albany, Ky.
 RIFE, Shirley 1226 N. Tuxedo St., Indianapolis, Ind.
 RILEY, Beverly R.R. 5, Mayfield, Ky.
 ROBBINS, Melba Jean 1615 Danville Rd. S.W., Decatur, Ala.
 ROBERTSON, Carol 325 Walker St., Holly Hill, Fla.
 ROBERTSON, Everett 212 Donelson Pike, Nashville, Tenn.
 ROBERTSON, Harold Wayne 86 Hart St., Nashville, Tenn.
 ROBERTSON, Gene 86 Hart St., Nashville, Tenn.
 RODDY, Bill Hayes 104 Monroe St., Glasgow, Ky.
 RODGERS, Mark 505 Lester Ave., Nashville, Tenn.
 ROE, Margaret 9301 W. Washington, Tolleson, Ariz.
 ROUSE, Herman 2623 Virginia, St. Louis, Mo.
 ROWE, Lucille 1015 Brooks, Memphis, Tenn.
 RUDDY, Joyce 52 Lakeshore Dr., Old Hickory, Tenn.
 RUSCHEL, Albert 119 Ebenzer St., Pomeroy, Ohio
 RUSCHEL, Barbara C. Soldier, Ky.
 RUSHING, Nancy 2205 Bluefield Ave., Bluefield, W. Va.
 RUSSUM, Robert 919 Montrose, Nashville, Tenn.
 RUTLEDGE, Donald 1124 Rose Gardens, Clarksdale, Miss.
 RYLAND, Sue 5520 N. Palafaz, Pensacola, Fla.

SALYER, John P. 1203 17th Ave. S., Nashville, Tenn.
 SCOTT, Dwight A. R.F.D. Box 126, Floyd, Va.
 SCUTT, David 2601 Highview Dr., Nashville, Tenn.
 SHANNON, Ruth Box 70, Sistersville, W.Va.
 SHARPTON, Geraldine R.R. 1, Logan, Ala.
 SHARPTON, Mary Ruth R.R. 1, Logan, Ala.
 SHAW, Frances R.R. 3, Thomaston, Ga.
 SHAW, Joyce L. 2547 Forbes St., Jacksonville, Fla.
 SHELTON, William 570 Blackstone, Madison, Tenn.
 SHIELDS, Dorothy M. R.R. 1, Box 463, Terre Haute, Ind.
 SHIRLEY, Judy 16301 N.E. 2nd Ave., Miami, Fla.
 SHIRLEY, Wendell 415 10th Ave. S.W., Decatur, Ala.
 SHOMO, Philip 514 Southern Turf, Nashville, Tenn.
 SHUMAN, Jo Anne 229 Willowbranch Ave., Jacksonville, Fla.
 SILVERNAIL, Keith R.R. 2, Vicksburg, Miss.
 SIMS, Jesse Star Route, Waynesburg, Ky.
 SISSON, Ed R.R. 2, Box 31, Princeton, W.Va.
 SIX, Ruth R.R. 2, New Cumberland, W.Va.
 SJOBLUM, Charles Box 1, Lake Mary, Fla.
 SLAY, Rufus P.O. Box 314, McComb, Miss.
 SLAY, Troy P.O. Box 314, McComb, Miss.
 SLIFER, Marita 200 Oak, Springfield, Tenn.



REV. C. E. SHUMAKE
District Superintendent

TENNESSEE DISTRICT

C. E. SHUMAKE, Dist. Supt.

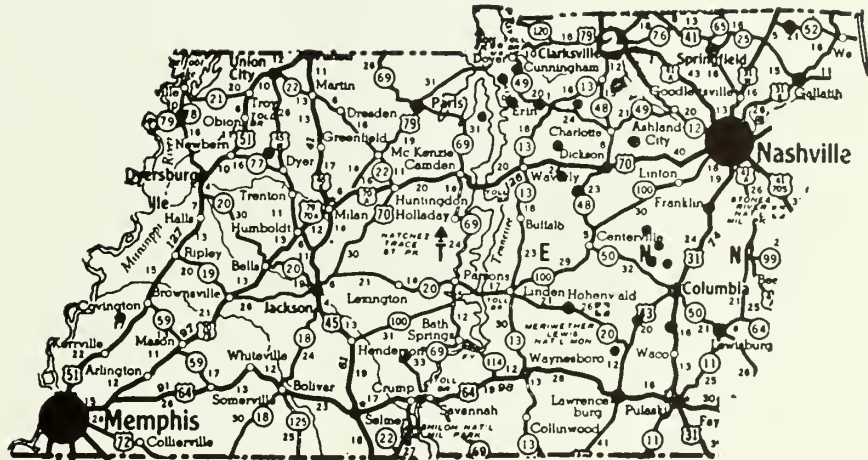
ADVISORY BOARD

- DR. WM. GREATHOUSE
- MR. JOHN T. BENSON, JR.
- REV. M. E. REDFORD
- MR. JAMES AGEE

A Growing District

Supporting

A Growing School



DISTRICT OFFICERS

- REV. C. T. DUCKETT Secretary
- MR. JAMES PATE Treasurer
- REV. GEORGE SCUTT Church School Board
- REV. JOHN KNIGHT Dist. N.Y.P.S. President
- MRS. GEORGE SCUTT Dist. N.F.M.S. President

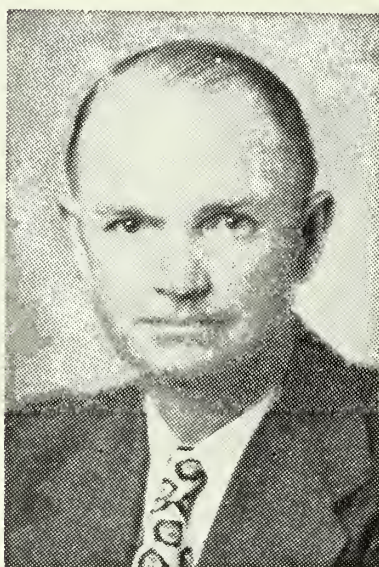
Congratulations To The Class Of 1960

GEORGIA DISTRICT

Congratulations to the Class Of 1960

ADVISORY BOARD

MR. J. F. CHILTON
REV. BRUCE HALL
MR. L. E. MARTIN
REV. H. J. EASON



DR. MACK ANDERSON
District Superintendent

TREVECCA TRUSTEES

REV. H. J. EASON
MR. SAM KNOX
REV. BRUCE HALL
DR. MACK ANDERSON

DISTRICT OFFICERS

REV. B. D. RADEBAUGH	Secretary
REV. BRUCE HALL	Treasurer
REV. WENDELL WELLMAN	Church Schools Chairman
REV. JACK DELL	N. Y. P. S. President
MRS. MACK ANDERSON	N. F. M. S. President

MISSISSIPPI DISTRICT

Boosting Trevecca Nazarene College

DISTRICT OFFICERS

REV. PAUL BLACKMON District Secretary
REV. HALBERT JENKINS District Treasurer



DR. OTTO STUCKI
District Superintendent

TREVECCA TRUSTEES

DR. OTTO STUCKI
MR. J. C. TOUSLEY

ADVISORY BOARD

REV. J. O. BEARDEN
REV. B. W. DOWNING
MR. N. E. RUTLEDGE
MR. J. C. TOUSLEY

DISTRICT DEPARTMENTS

MRS. B. W. DOWNING N. F. M. S. President
REV. M. L. TURNEY Church Schools Chairman
REV. MICKEY G. SMITH N. Y. P. S. President
MRS. M. D. SARTIN Junior Director

Church School Convention
July 29, 1960

N. F. M. S. Convention and District Assembly
Aug. 9-10-11, 1960

VIRGINIA DISTRICT

CHURCH OF THE NAZARENE

TREVECCA TRUSTEES

DR. V. W. LITTRELL
REV. RALPH SCHURMAN



DR. V. W. LITTRELL
District Superintendent

ADVISORY BOARD

REV. V. W. LITTRELL
REV. E. G. LUSK
REV. H. G. COMPTON
MR. W. H. HUNT
REV. J. E. FOX

DISTRICT OFFICERS

REV. G. M. GRAHAM District Secretary
REV. E. G. LUSK District Treasurer
MRS. V. W. LITTRELL N.F.M.S. President
REV. D. S. RADCLIFFE N.Y.P.S. President
REV. E. M. FOX Chairman Church School Board

Camp Meeting
DILLWYN, VA.
August 12-21, 1960

N. Y. P. S.
DISTRICT INSTITUTE
July 18-22, 1960

THE SOUTH CAROLINA DISTRICT

Congratulates the Class of 1960

**TRUSTEES OF
TREVECCA NAZARENE COLLEGE**

REV. BEN F. MARLIN
REV. E. N. GUNTER
REV. W. B. WELCH

DISTRICT ADVISORY BOARD

REV. E. N. GUNTER
REV. W. B. WELCH
MR. V. V. SHUMPERT
MR. W. H. THOMPSON

District Secretary

REV. MARION PRESSLEY

District Treasurer

REV. C. MARSELLE KNIGHT

District Chairman Church Schools

REV. N. J. LEWIS

District N.F.M.S. President

MRS. BEN F. MARLIN

District N.Y.P.S. President

REV. JAMES D. TAYLOR



REV. BEN F. MARLIN
District Superintendent

New South Carolina District Parsonage



EAST TENNESSEE DISTRICT

WITH 80 CHURCHES SUPPORTING TREVECCA

REV. DOUGLAS REED

N.Y.P.S. President

MRS. J. A. McCAMMON

N.F.M.S. President

District Advisory Board

REV. L. B. HICKS

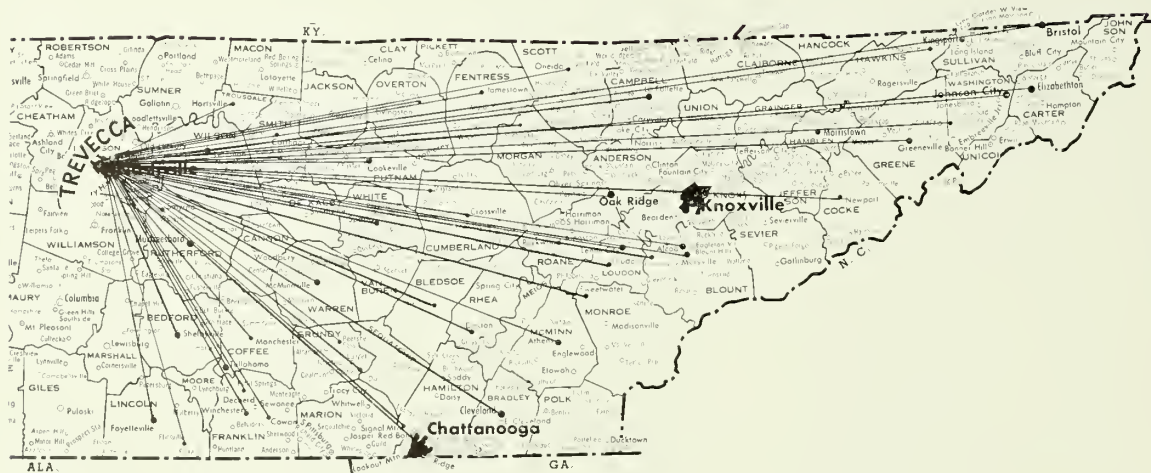
REV. ANSEL FORSYTH

MR. W. L. ELKINS

MR. OSCAR WHEATON



REV. VICTOR E. GRAY
District Superintendent.



WE ARE PRAYING FOR AND SUPPORTING TREVECCA

Greetings to Trevecca and Congratulations to the Class of 1960

EASTERN KENTUCKY DISTRICT

CHURCH OF THE NAZARENE



DEPARTMENTAL LEADERS

Reading from left to right

First Row

MRS. D. S. SOMERVILLE District N.F.M.S. President
REV. D. S. SOMERVILLE District Superintendent

Second Row

REV. A. O. LITTLE Chairman, Church School Board
REV. O. L. STONE District N.Y.P.S. President

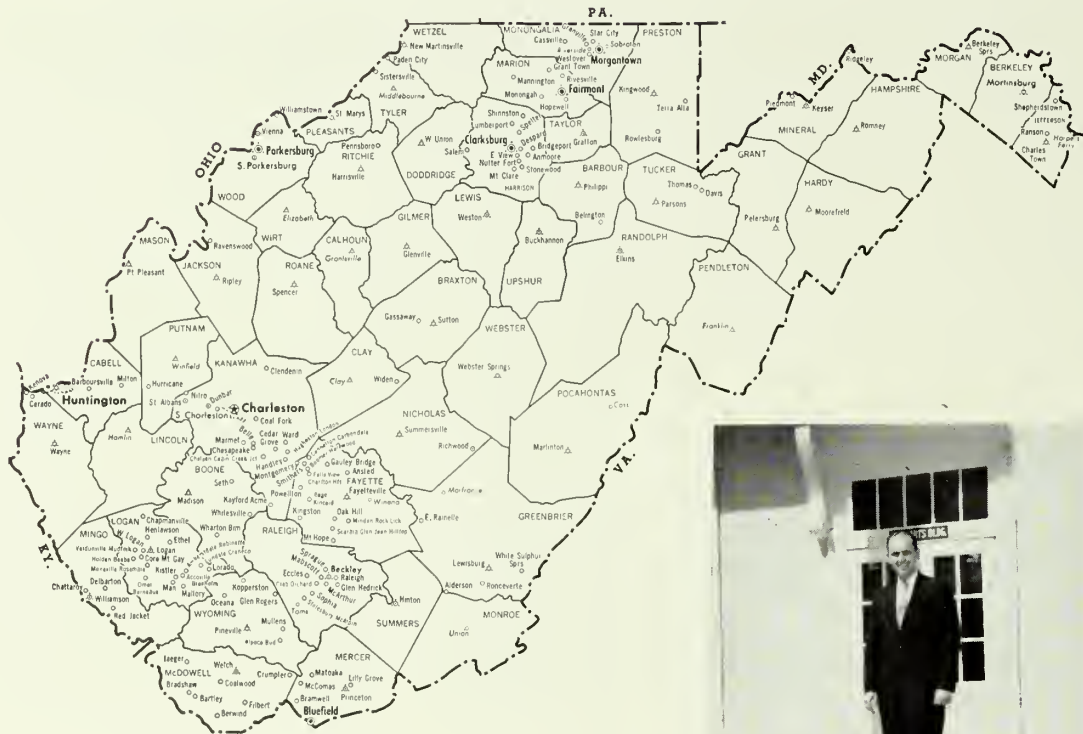
DISTRICT ADVISORY BOARD

REV. A. O. LITTLE MR. LAWRENCE WILEY
REV. O. L. STONE MR. E. H. (BOB) STEENBERGEN

We Provide Students for and Use Students of T. N. C.

WEST VIRGINIA DISTRICT

"Congratulates the Class of 1960"



HARVEY H. HENDERSHOT
District Superintendent

DISTRICT OFFICERS

MRS. MARY E. MILLER President N.F.M.S.
 REV. JOHN HANCOCK President N.Y.P.S.
 REV. J. C. WALLACE Chairman Sunday School
 REV. JOHN BROWNING Secretary
 REV. C. GLENN BOWLING Treasurer

TRUSTEES

DR. EDWARD C. ONEY
 REV. H. HARVEY HENDERSHOT
 REV. C. GLENN BOWLING
 REV. ROY T. MCKINNEY
 REV. J. C. WALLACE
 REV. JOHN R. BROWNING
 (Alumni)

"Grateful for Trevecca's Past, We Pledge Support to Her Greater Tomorrows"

NORTH CAROLINA DISTRICT

GROWING

with new churches . . .

with untapped opportunities . . .

within each district department . . .

Salutes

Trevecca Nazarene College

GROWING

with high-level students . . .

with expanding facilities . . .

with academic fitness . . .

And Congratulates the Class of '60



LLOYD B. BYRON, D.D.

DR. LLOYD B. BRYON
District Superintendent

REV. C. W. LINDEMAN
Church Schools Chairman

REV. JAMES H. INGALLS
N. Y. P. S. President

MRS. LLOYD B. BYRON
N. F. M. S. President

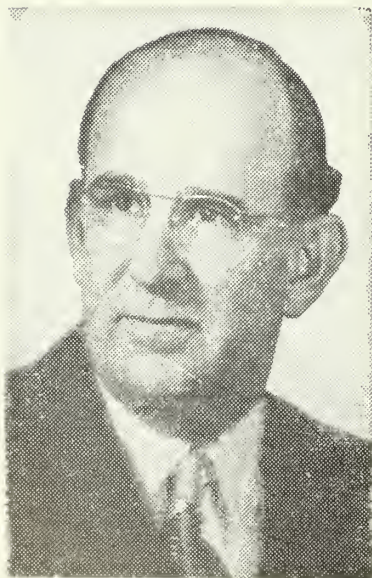
Congratulations

to

A Growing College

And The Wonderful

CLASS OF '60



DR. JOHN L. KNIGHT

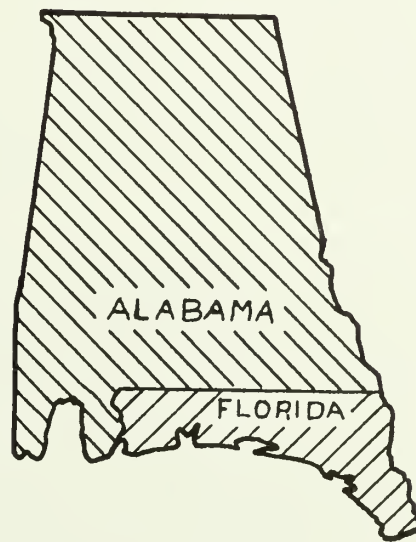
FLORIDA DISTRICT

DR. JOHN L. KNIGHT

Superintendent

"Pushing for Growth and Progress"

FROM "THE HEART OF DIXIE"
THE ALABAMA DISTRICT



SALUTES
TREVCCA NAZARENE COLLEGE

AND SUPPORTS WITH:

STUDENTS

FINANCE

PRAYER

DR. L. S. OLIVER
District Superintendent

THE KENTUCKY DISTRICT

CHURCH OF THE NAZARENE

Congratulate the Class of '60

District Advisory Board

REV. DENNIS E. WYRICK
REV. OREN D. THRASHER
MR. CLARENCE WILEY
MR. KENNETH RICE

District Secretary

REV. SAM R. BROWN

District Treasurer

REV. OREN D. THRASHER



REV. D. D. LEWIS
District Superintendent

District Chairman of Church School Board

REV. HADLEY HALL

District N.F.M.S. President

MRS. HUGH CLARK

District N.Y.P.S. President

REV. COOLIDGE GRANT

COLLEGE TRUSTEES

REV. D. D. LEWIS

REV. DENNIS E. WYRICK

REV. OLIVER C. HUFF

The Kentucky District Appreciates Trevecca Nazarene College,
its Faculty and its President, Dr. A. B. Mackey

COLLEGE HILL CHURCH

REV. T. E. JONES

Minister

"Our College Church Appreciates Trevecca"



Sunday School Supt.
MR. WILLARD BRINKMAN

N.Y.P.S. President
MR. BILL GALLOWAY

N.F.M.S. President
MRS. V. N. RICHARDSON

A Vital Concern for Every Interest of

TREVECCA NAZARENE COLLEGE

FIRST CHURCH OF THE NAZARENE

FORT LAUDERDALE, FLORIDA

Congratulations

o
m
e

To

The
h
e

Class

h
u
r
c
h

Of
f

Sixty
e
r
v
i
c
e



REV. WILLIAM O. BLUE
Minister

Congratulations to the Class

of

1960

FIRST CHURCH OF THE NAZARENE

CLARKSVILLE, TENNESSEE

REV. CLAUDE W. GALLOWAY, Pastor

INGLEWOOD

CHURCH OF THE NAZARENE

Gallatin Road and Sunnymeade Drive

NASHVILLE, TENNESSEE

Congratulates the Class of '60

REV. ORVAL M. STONE, Pastor



DR. WILLIAM GREATHOUSE
Pastor

A
Church with
A Welcome



FIRST CHURCH
OF THE
NAZARENE

510 WOODLAND ST.

NASHVILLE, TENN.

HEAR FIRST CHURCH

ON THE RADIO

W. L. A. C.

SUNDAYS 8:00 TO 8:30

THE
N. Y. P. S.

OF FIRST CHURCH—NASHVILLE, TENN.
EXTENDS A WARM WELCOME TO
ALL STUDENTS
SERVICES EACH SUNDAY AT 6:00 P.M.
AN AGE GROUP FOR EVERYONE

FIRST CHURCH OF THE NAZARENE
510 WOODLAND STREET

NASHVILLE, TENN.

Compliments of the
WISE MEMORIAL BIBLE CLASS

FIRST CHURCH OF THE NAZARENE
NASHVILLE, TENNESSEE

J. L. BOWERS, President

JOHN T. BENSON, II, Teacher

Sunday School 9:30 A.M.

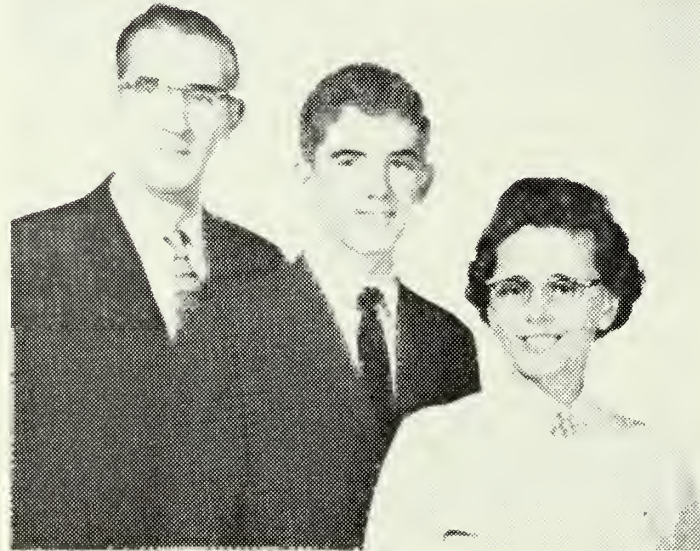
Compliments of
FIRST CHURCH OF THE NAZARENE

Park Avenue at Grant Street

CHARLESTON, W. VA.

J. C. WALLACE

Minister



Congratulations

to the

CLASS OF '60

from the

CLASS OF '61

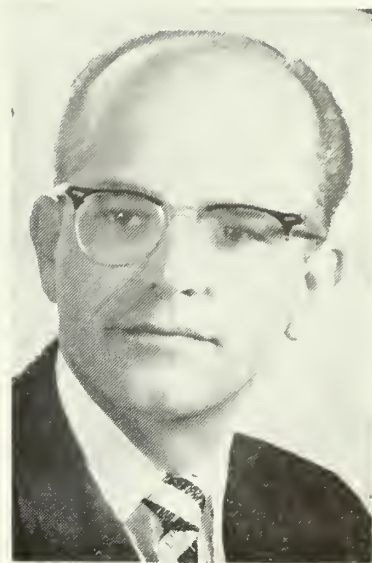
Birmingham First Church

Pastor and People

Congratulates

The Class

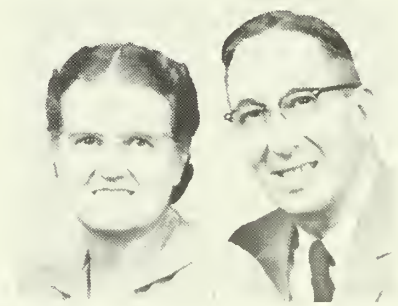
of '60



HOWARD W. HILL

THE CHURCH WITH A HEART IN THE HEART OF BIRMINGHAM
INVITES YOU TO WORSHIP WITH THEM.

TREVECCA NAZARENE COLLEGE HOLDS A DEAR PLACE IN OUR HEARTS AT ROANOKE, VA. FIRST CHURCH



REV. RALPH SCHURMAN
Pastor

RAYMOND CARR
Sunday School Superintendent

JOAN RADFORD
N.F.M.S. President

WILBERT GALLAGHER
N.Y.P.S. President



2400 S.W. 32nd Ave.—Miami 34, Fla.
Phone NI 3-7117

CALVARY
Church Of The Nazarene

Congratulates the
CLASS OF '60

Visit Us When in Miami;

LOREN E. SCHAFFER, Minister
3330 S.W. 25th Street
Phone HI 6-9062

"Proclaiming full salvation in Tropical America"

Congratulations

to the

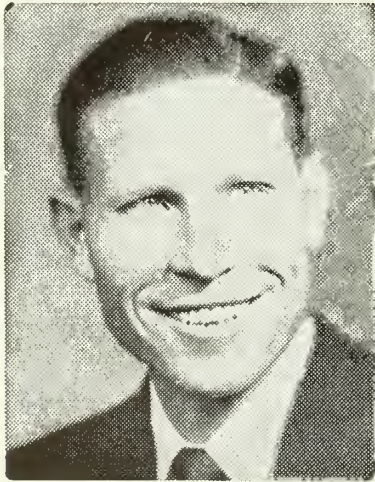
CLASS OF 1960

First

Church of the Nazarene

CHARLESTON HEIGHTS, S. C.

REV. W. B. WELCH, Pastor



REV. HUGH SLATER

Evangelist

P.O. Box 527—Kansas City 41, Mo.

**Boosting Trevecca
and
Preaching Christ**

Member Georgia District

COMPLIMENTS

OF

CHURCH OF THE NAZARENE

SPRINGFIELD, TENNESSEE

REV. K. B. SLIFER, Pastor

FIRST

CHURCH OF THE NAZARENE

Corner of Greensboro Ave. and 15th St.
TUSCALOOSA, ALABAMA

REV. PAUL R. HOLT, Minister

TREVECCA
FLORIDA N. Y. P. S.

Salutes You

THOMAS REAM, President



BILL ANDERSON, Vice-President



EUGENE WILLIAMS, Secretary



WILLIAM CHAMBERS, Treasurer



HENRY COOPER, Teen Age Supervisor



DON KNIGHT and LARRY MOORE, Council Members at Large

**FIRST
CHURCH OF THE NAZARENE**

"Thirty Years in Orlando"

1030 West Kaley Ave.
ORLANDO, FLA.

REV. J. DONALD FREESE, Pastor
LARRY L. FINGER, Minister of Music

**FIRST
CHURCH OF THE NAZARENE**

Kentucky & Walnut Sts.

S. CHARLESTON, W. VA.

Boosters for T. N. C.

REV. C. G. BOWLING
Pastor

GRACE CHURCH

INEZ, KY.

REV. PEARL WILLIAMS
Pastor

Supporting T.N.C.

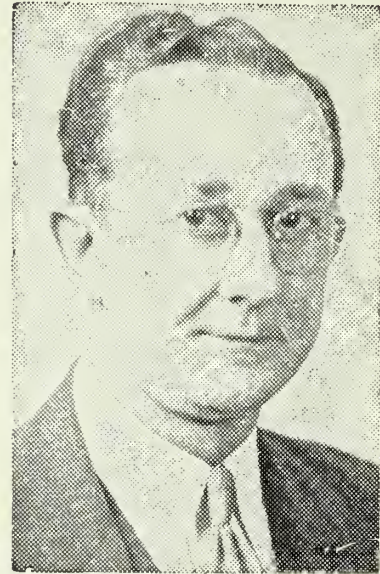
WEE WASH-IT

628 Murf. Road

"Nashville's Cleanest"

90 Min. Wash.
Fluff Dry Folded
30 Min. Damp-Wash

Dry Cleaning—Finished
Laundry—plus
Shirt Service



Compliments

of

A FRIEND

CENTRAL CHURCH OF THE NAZARENE



Adams Avenue at West 11th Street
HUNTINGTON, WEST VIRGINIA

EXTENDING BEST WISHES TO TREVECCA'S FACULTY,
STUDENTS AND 1960 GRADUATES!

Our Church . . . A Spiritual Lighthouse

OUR LEADERS

MR. JOHN PHIPPS . . . S.S. Superintendent
MRS. LUCILLE STALNAKER . . . NFMS President
MR. ROBERT S. THOMAS . . . NYPS President

Our Pastor . . .



REV. JOHN HANCOCK

"OFFERING CHRIST AND FULL SALVATION IN WEST VIRGINIA'S LARGEST CITY"

ALAMO PLAZA HOTEL COURTS

HIGHWAY 41 - 70S

100% AIRCONDITIONED

TV IN EVERY ROOM

SWIMMING POOL

Howard Johnson Restaurant Adjoining Court

GREER'S RESTAURANT

One of Many Good Places to Eat

INTOXICATING BEVERAGES PROHIBITED

407 MURFREESBORO ROAD

Adjacent To

MERCURY COURT

411 MURFREESBORO ROAD

Free T. V.

"Nashville's Newest and Finest"

Swimming Pool

Room Phones

Dial AL 5-0658 for Reservation

Wading Pool





